



Guildown Avenue, N12

£4,000 Per calendar month

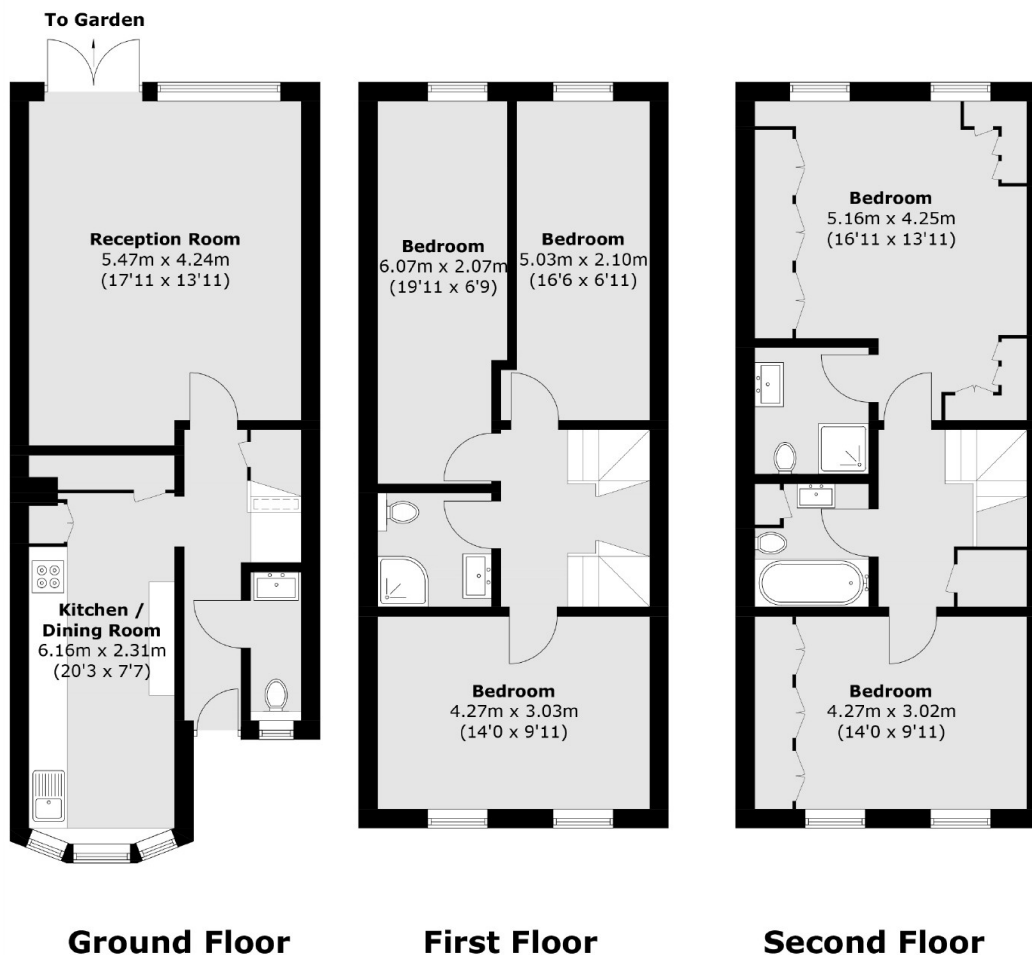
A modern five bedroom house set over three levels with off street parking. This property is offered in good condition throughout and features three bathrooms and an additional WC.

The property is close to Woodside Park Underground station and also close by to all the amenities on North Finchley High Road.

Features

- 5 Bedrooms
- 3 Bathrooms
- 1 Reception
- Kitchen Diner
- Off Street Parking
- Modern

Guildown Avenue, London, N12



Total area (approx.): 143.2 sq. m (1,541.3 sq. ft)