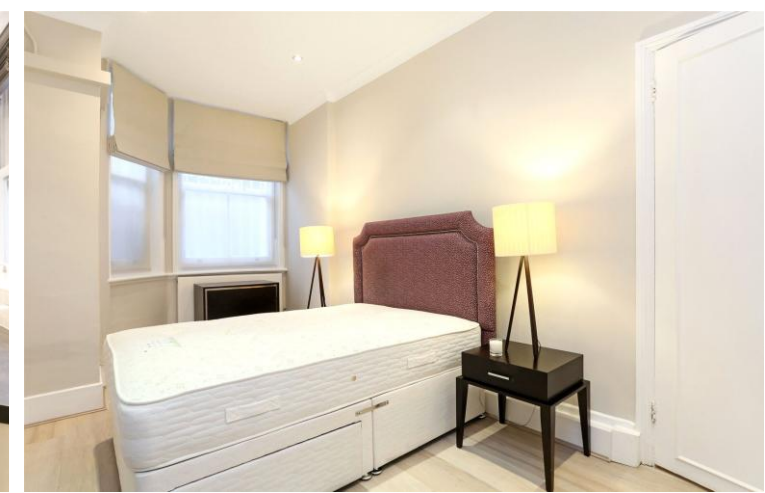




Sloane Gardens  
Chelsea, SW1W

CHESTERTONS





Professionally Managed – A well-presented one bedroom apartment benefiting from wooden floors throughout, a separate fully fitted kitchen, private patio, spacious double bedroom and an additional study area ideal for home working.

Situated on the sought-after Sloane Gardens, the property is conveniently located for access to Sloane Square, King's Road, Knightsbridge and Pimlico. Both Hyde Park and Battersea Park are within easy walking distance, offering excellent green open spaces and leisure facilities.

The apartment further benefits from excellent natural light, ample storage and access to a wide range of local amenities including boutique shops, cafés, restaurants and transport links. Ideal for professionals seeking a well-connected home in the heart of Chelsea.

- One bedroom
- One reception
- One bathroom
- Porter
- Pets

### £3,500 pcm

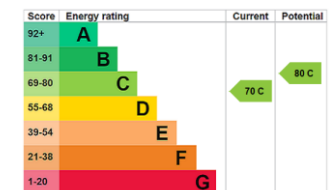
Additional tenant charges apply (fees apply to non-AST tenancies only)

Tenancy Agreement Fee: £300

References per Tenant/Guarantor: £60

Inventory check (approx. £100 – £250 inc. VAT)

[chestertons.co.uk/property-to-rent/applicable-fees](http://chestertons.co.uk/property-to-rent/applicable-fees)



**Minimum Term:** 12 months  
**Deposit Required:** Five weeks  
**Local Authority:** Kensington and Chelsea  
**Council Tax Band:** G  
**EPC Rating:** C  
**Furnished**

### Chestertons Chelsea Lettings


17 Cale Street  
 London  
 SW3 3QR  
[chelsealettingsusers@chestertons.co.uk](mailto:chelsealettingsusers@chestertons.co.uk)  
 02075944750  
[chestertons.co.uk](http://chestertons.co.uk)

## Sloane Gardens

Approximate Gross Internal Area  
(Excluding Patio / Reduced Headroom) :-  
78 sq m / 816 sq ft  
Reduced Headroom :- 2 sq m / 21 sq ft  
Total :- 78 sq m / 839 sq ft



### Lower Ground Floor

 = Reduced headroom below 1.5 m / 5'0'

Chesterton UK Services Limited trading as Chestertons for themselves and for the vendor of this property whose agents they are, give notice that (i) these particulars do not constitute any part of an offer or contract, (ii) all statements contained within these particulars are made without responsibility on the part of Chestertons or the vendor, (iii) whilst made in good faith, none of the statements contained within these particulars are to be relied upon as a statement or representation of fact, (iv) any intending purchasers must satisfy themselves by inspection or otherwise as to the correctness of each of the statements contained within these particulars, (v) the vendor does not make or give either Chestertons or any person in their employment any authority to make or give representation or warranty whatsoever in relation to this property. Wide angle lenses may be used. ©Copyright Chestertons | Chesterton Global Ltd | Registered Office 5th Floor, The Lantern, 75 Hampstead Road, London, NW1 2PL Registered Company Number 05334580.



This paper is  
100% recyclable