



Faraday Road, SW19  
£1,125,000



## Faraday Road, SW19

A well presented four bedroom, two bathroom, Victorian end of terrace house in the heart of the well sought after South Park Gardens.

The ground floor has a separate reception room to the front with a modern open plan kitchen diner to the rear of the property. There are bi-fold doors opening onto the garden, creating excellent natural light and seamless indoor-outdoor living. A downstairs WC completes this level.

The first floor comprises two well-proportioned double bedrooms, a family bathroom and a smaller bedroom/study at the front of the house.

The loft has been converted to offer another large double bedroom and has an ensuite bathroom. The house is in good condition overall and sold with no onward chain.

Nestled in the highly regarded South Park Gardens grid, with quick access to Wimbledon Town Centre, National Rail, District and Northern line tube, Haydons Road Thameslink and Tram Link, with well respected schools nearby.

### Features

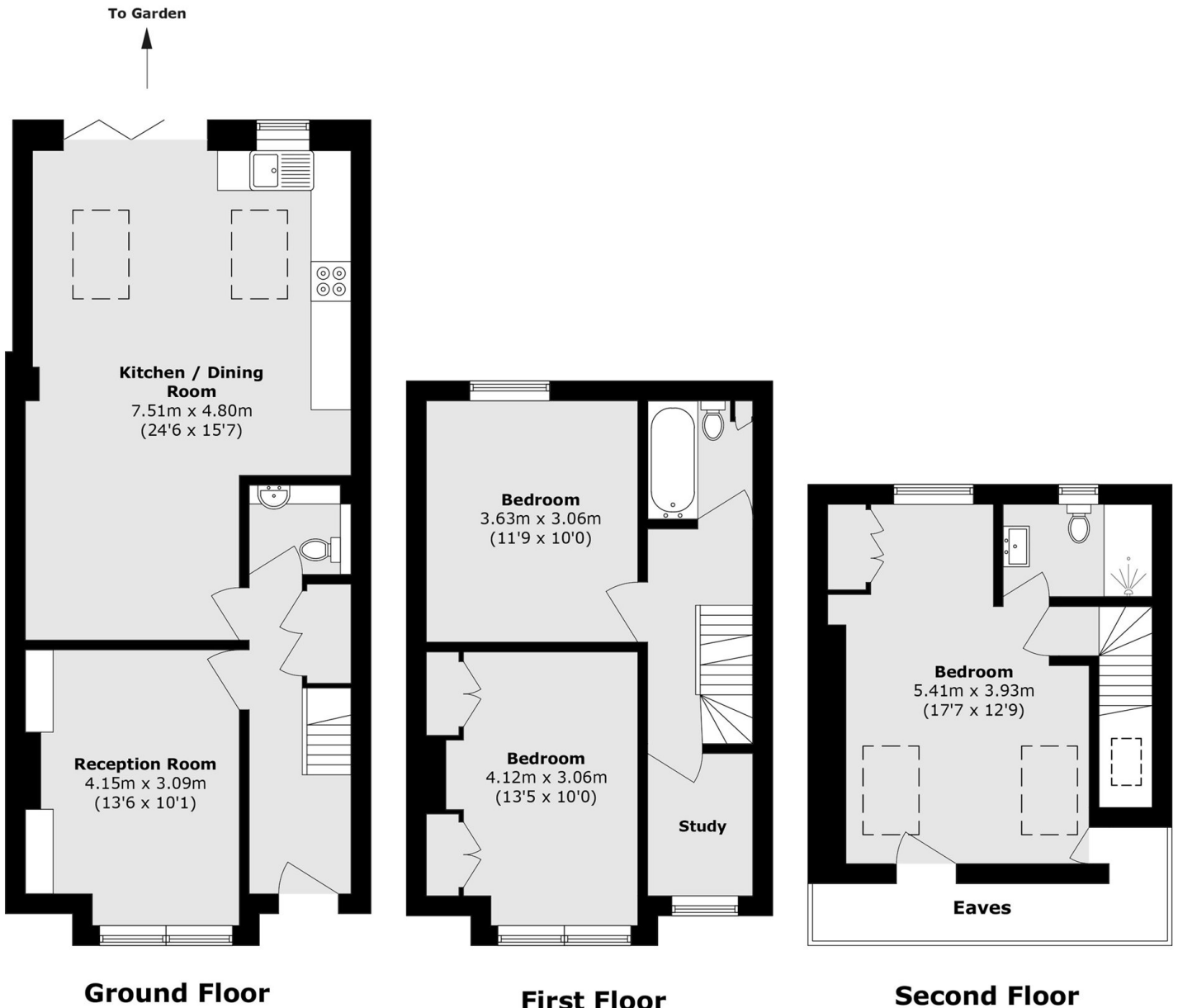
- Three Double Bedrooms
- Two Bathrooms
- Semi Detached
- Open Plan Kitchen
- South Park Gardens
- No Onward Chain







Faraday Road,  
London, SW19



Total area (approx.): 119.5 sq. m (1286.3 sq. ft)  
(Excluding Eaves)