

for sale

offers in the region of **£450,000** Freehold



Cartbridge Lane South Walsall WS4 1GA

Do you need help selling your property?

Do you need help finding the right mortgage?

Do you have a property to let?

Here at Paul Dubberley Wednesbury we offer free advice on the house buying and selling process.

Contact us on **01215052522**
Residential Sales & Lettings | Mortgage Services |
Conveyancing | Surveyors | Land & New Homes



Property Details

Agents Notes

A management is paid each year, this can sometimes change. The vendor currently pays £149.12 for the year.

Entrance Hall

Storage and stairs to landing.

Living Room 16' 7" x 10' 3" (5.05m x 3.12m)

Front aspect double glazed window, rear aspect double glazed patio doors and two radiators.

Study 9' 5" x 9' 5" (2.87m x 2.87m)

Front aspect double glazed window, side aspect double glazed window and radiator.

Kitchen 9' 8" x 20' 5" (2.95m x 6.22m)

Rear aspect double glazed window, side aspect double glazed window, integrated washing machine and dishwasher, tiled flooring, electric over with gas hob, boiler and rear aspect door leading to garden.

Guest W/C

wash hand basin, w/c and radiator.

Landing

Rear aspect double glazed window and storage.

Bedroom One 14' 9" x 9' 10" (4.50m x 3.00m)

Side aspect double glazed window and radiator.

En Suite

Rear aspect double glazed window, w/c, shower cubicle, wash hand basin and tiled floor.

Bedroom Two 10' 10" x 11' 2" (3.30m x 3.40m)

Front aspect double glazed window and radiator.

Bedroom Three 10' 5" x 8' (3.17m x 2.44m)

Front aspect double glazed window, built in wardrobes and radiator.

Bedroom Four 10' 6" x 8' 8" (3.20m x 2.64m)

Front aspect double glazed window, built in wardrobes and

radiator.

Bathroom

Front aspect double glazed window, wash hand basin, tiled floor, bath, w/c and radiator.

Front Garden

Lawn area and steps to front. Garage at the side of property.

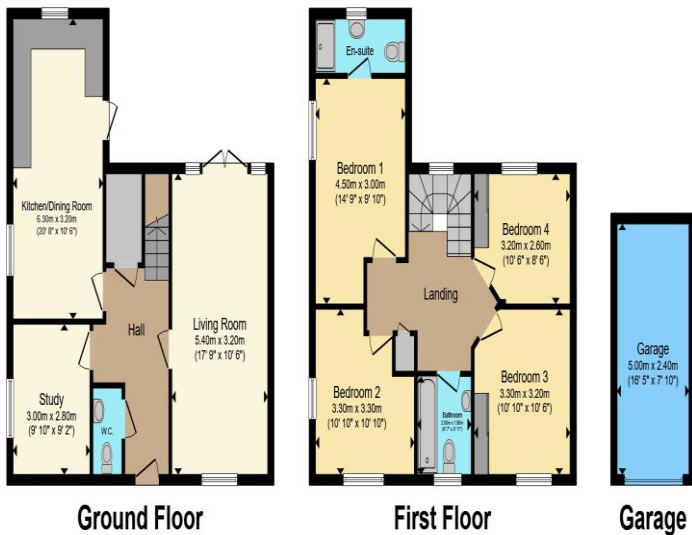
Rear Garden

Decking area, patio and lawn area.

Garage 16' 5" x 7' 10" (5.00m x 2.39m)

up and over doors.





To view this property please contact Paul Dubberley on

T 0121 505 3533
E wednesbury@pauldubberley.co.uk

97 Walsall Street
 WEDNESBURY WS10 9BY

Property Ref: PWE104140 - 0004

Tenure: Freehold EPC Rating: C

Council Tax Band: E

Total floor area 132.5 m² (1,426 sq.ft.) approx

This floor plan is for illustrative purposes only. It is not drawn to scale. Any measurements, floor areas (including any total floor area), openings and orientation are approximate. No details are guaranteed, they cannot be relied upon for any purpose and they do not form part of any agreement. No liability is taken for any error, omission or misstatement. A party must rely upon its own inspection(s). Powered by www.propertybox.io



1. MONEY LAUNDERING REGULATIONS Intending purchasers will be asked to produce identification documentation at a later stage and we would ask for your co-operation in order that there will be no delay in agreeing the sale. 2. These particulars do not constitute part or all of an offer or contract. 3. The measurements indicated are supplied for guidance only and as such must be considered incorrect. Potential buyers are advised to recheck measurements before committing to any expense. 4. We have not tested any apparatus, equipment, fixtures, fittings or services and it is in the buyers interest to check the working condition of any appliances.

Paul Dubberley is a trading name of Connells Residential which is registered in England and Wales under company number 1489613, Registered Office is Cumbria House, 16-20 Hockliffe Street, Leighton Buzzard, Bedfordshire, LU7 1GN. VAT Registration Number is 500 2481 05.

see all our properties at www.pauldubberley.co.uk | www.rightmove.co.uk | www.zoopla.co.uk