



ROSS BURBIDGE



@ ross.burbidge@exp.uk.com

 rossburbidge.exp.uk.com

 07792 512 628

Edgeworth, Miserden Road, Cheltenham, GL51

£170,000

🛏️ 2 🚿 1 🚗 1



Please Quote: RB1393-Ross Burbidge. A fantastic opportunity for first-time buyers, downsizers or investors alike, this well-presented two-bedroom home offers spacious and practical accommodation, a garage and a layout perfectly suited to modern living. Positioned within a popular residential location, the property provides excellent access to local amenities, transport links and nearby schools.

The accommodation is well balanced throughout and briefly comprises an entrance leading into a generous lounge/diner, creating an excellent space for both relaxing and entertaining. The kitchen is conveniently positioned and offers practical workspace and storage, whilst upstairs there are two well-proportioned bedrooms serviced by a family bathroom.

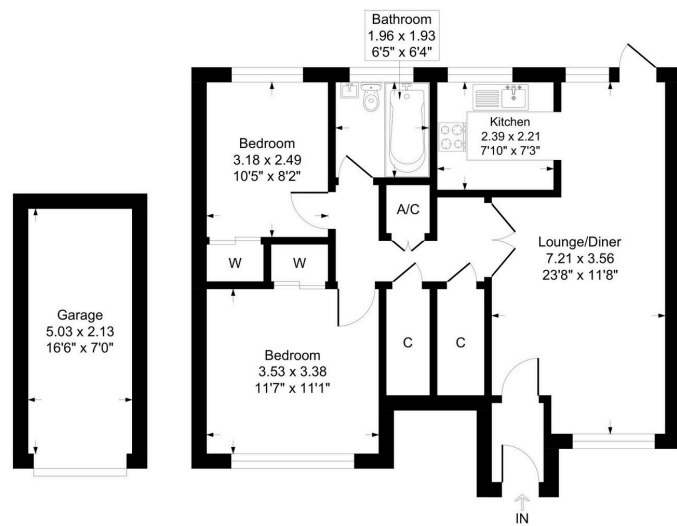
Externally, the property further benefits from a en-bloc garage providing useful parking or additional storage space. Offering comfortable living in a convenient setting, this property represents an excellent opportunity for buyers looking to step onto the property ladder or add to an investment portfolio.

Years Left On the Lease: 133

Ground Rent:

Service Charges:





Garage

Ground Floor

Illustration for identification purposes only, measurements are approximate, not to scale.

- Two Bedroom Ground Floor
- No Onward Chain
- Parking Freely Available
- Perfect First Time Buy
- Own Entrance
- Please Quote: RB1393-Ross Burbidge
- En- Bloc Garage
- Gas Heating
- Two Double Bedrooms
- Doors To Communal Gardens

