

Property ref: 181911

Englefield House, Moulsoford Mews, Reading, RG30 1ET

£1,500 PCM

HASLAM'S
Lettings



A very well presented, two bedroom apartment situated within the Portman Square development. Located on the 2nd floor, the building also benefits from a lift. The property is conveniently situated for local amenities and Reading West railway station. Reading Borough Council tax band C.

Broadband/Mobile Info: Connections available. For an indication of specific speeds and supply of Broadband and Mobile, we advise applicants go to the Ofcom website Broadband and Mobile Coverage Checker.

Available Now

- Two double bedrooms; Private communal garden for residents
- Open plan living room/kitchen with Juliet balcony
- En-suite to master bedroom plus main bathroom with shower over bath
- EPC rating C; One allocated undercroft parking space
- Additional £70 per month on top of the rent to cover hot water and heating via communal boiler
- Unfurnished; Managed by LANDLORD

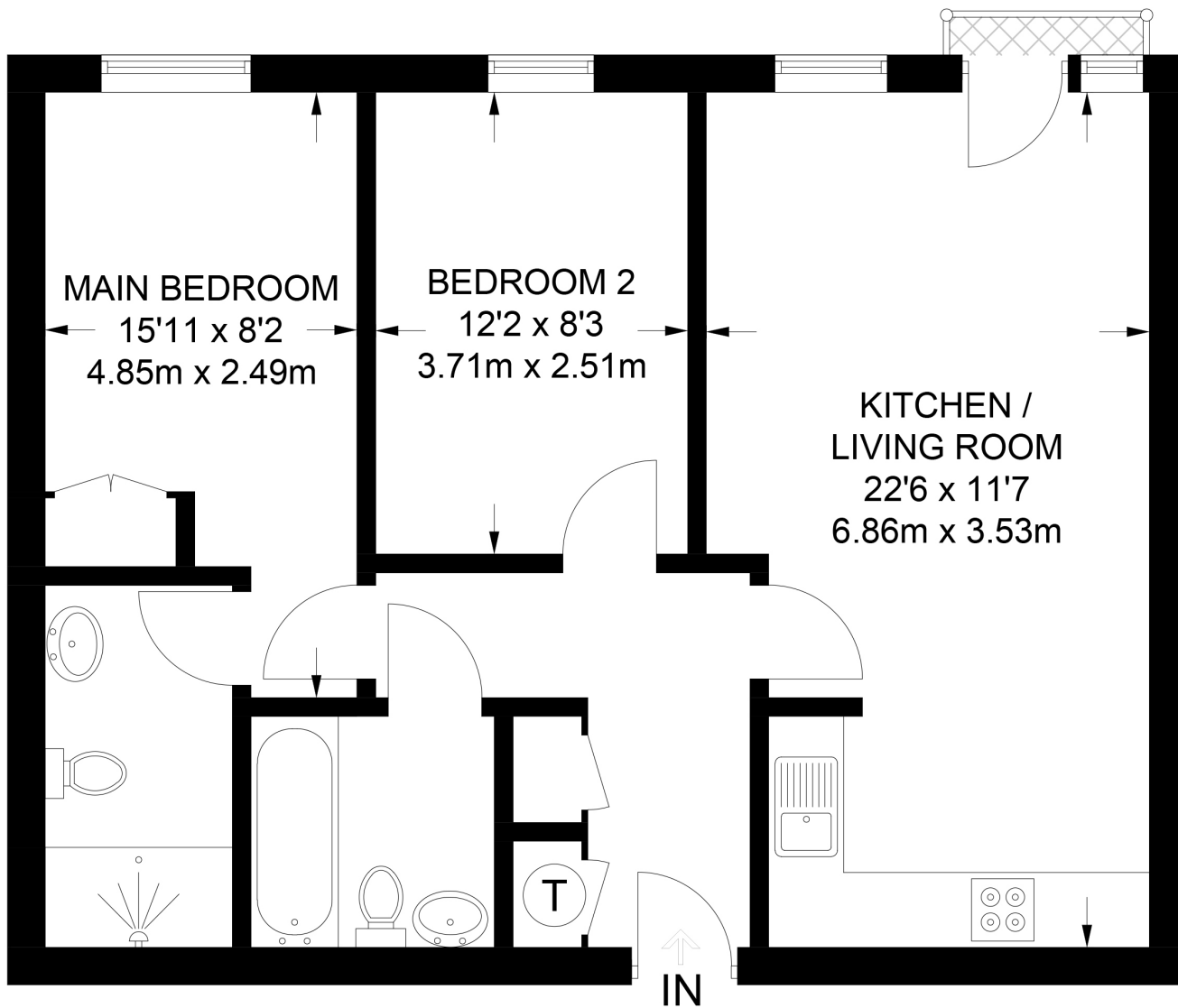
*Fees For Assured Periodic Tenancies: when you rent a property from us you will be required to pay a sum equivalent to one weeks' rent for a holding deposit. Upon successful application, this amount will be off set against your first months' rent. You will also be required to pay a security deposit equivalent to 5 weeks' rent which will be held and protected in line with Deposit legislation. For more information about our fees please visit: www.haslams.net
Fees for all other tenancies (Non Housing Act Tenancies / Company Lets): when you rent a property from us we will charge you a one-off fee per property. This charge is the equivalent of 15 days of the monthly rental charge (+VAT) with a minimum fee of £450 (inc.VAT) up to a maximum of £650 (inc.VAT). Other fees may apply depending on your circumstances.

0118 960 1055

lettings@haslams.net www.haslams.net

Haslams Estate Agents Ltd, 159 Friar Street, Reading, Berkshire, RG1 1HE





FIRST FLOOR

APPROXIMATE GROSS INTERNAL AREA
656 SQ FT / 60.9 SQ M

This plan has been drawn for illustrative and identification purposes only.