

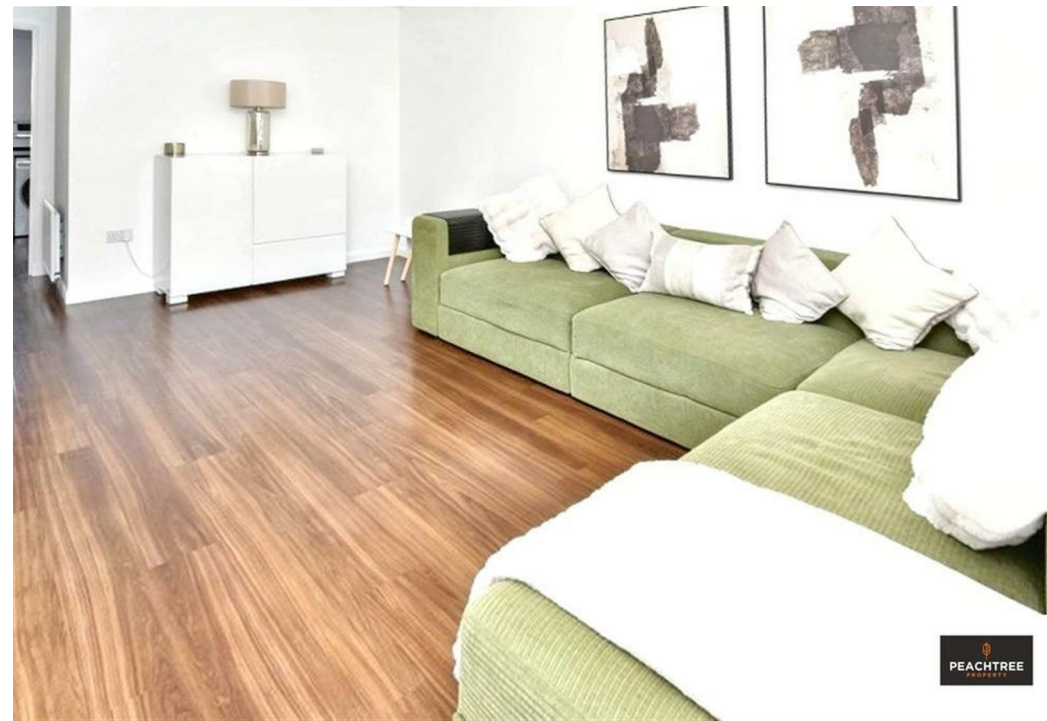
21 Lochview Wynd, Bishopton, PA7 5GB

Offers Over £239,999

EPC Rating: C Council Tax Band: D



PEACHTREE
PROPERTY



Peachtree Property are proud to welcome to the market this three-bedroom terraced villa. Nestled in the charming area of Lochview Wynd, Bishopton, this modern house offers a delightful blend of comfort and contemporary living, providing ample space for families or those seeking a stylish home.

Upon entering, you are welcomed into a spacious reception room, perfect for entertaining guests or enjoying quiet evenings with family. The house boasts three well-proportioned bedrooms, each designed to offer a peaceful retreat. The two bathrooms are thoughtfully appointed, ensuring convenience for both residents and visitors alike.

The location of this property is particularly appealing, situated in a friendly neighbourhood that combines the tranquillity of suburban life with easy access to local amenities. Bishopton is known for its community spirit and offers a range of shops, schools, and recreational facilities, making it an ideal place for families.



28 Hairst Street Hairst St

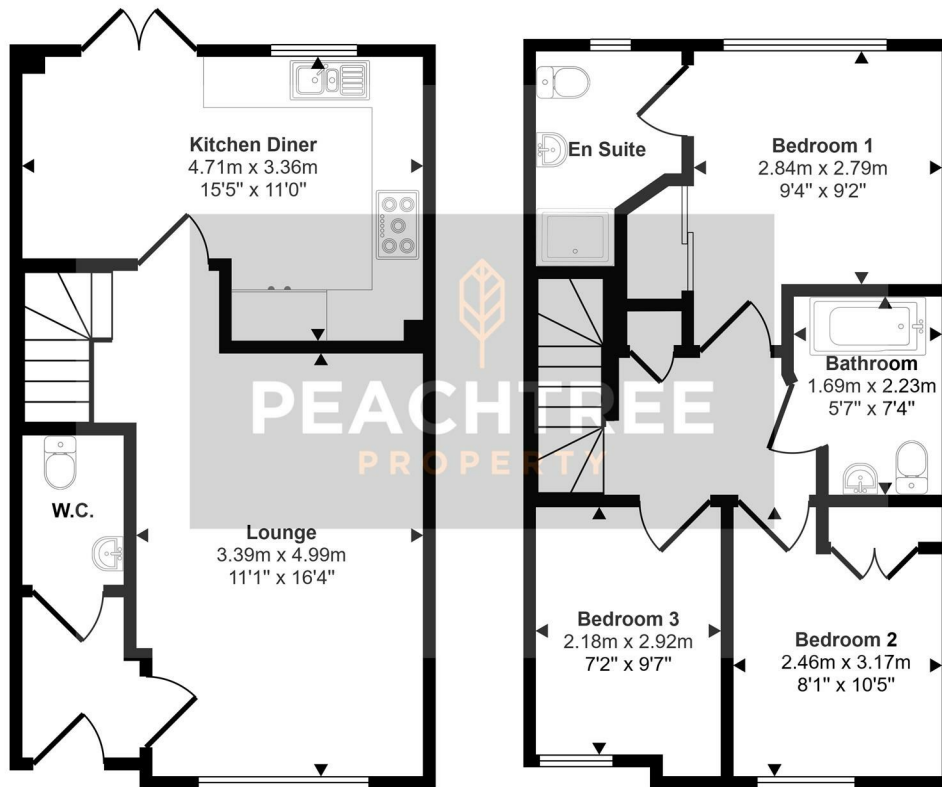
Renfrew

PA4 8QY

0141 577 1111

info@peachtreeproperty.co.uk

Approx Gross Internal Area
80 sq m / 858 sq ft



This floorplan is only for illustrative purposes and is not to scale. Measurements of rooms, doors, windows, and any items are approximate and no responsibility is taken for any error, omission or mis-statement. Icons of items such as bathroom suites are representations only and may not look like the real items. Made with Made Snappy 360.

