





Allan Morris
estate agents

 **MAYFAIR**
OFFICE GROUP

Flat 4, Hope Court, 75 Checketts Lane, Worcester. WR3 7JW

Offers In Region Of £140,000

 1  1  1



A spacious and well presented first floor one bedroom Apartment, with Juliette balcony to the front elevation, within this popular location of North Worcester, offering easy access to amenities, local schooling, Worcester and major transport links.

Accommodation briefly comprises: Secure entry and stairs rising to first floor into Hallway, open-plan Sitting Room/Dining Area with Kitchen off, double Bedroom and Bathroom.

Outside: Allocated parking.

Sitting Room / Dining Area: - 5m x 3.5m (16'4" x 11'5")

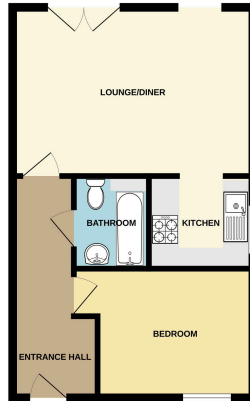
Kitchen: - 2.2m x 2m (7'2" x 6'6")

Bedroom: - 4.1m x 2.6m (13'5" x 8'6")

Bathroom: - 2m x 1.6m (6'6" x 5'2")



GROUND FLOOR
442 sq.ft. (41.1 sq.m.) approx.



TOTAL FLOOR AREA: 442 sq.ft. (41.1 sq.m.) approx.
*These energy ratings are based on the energy efficiency of the building and the energy efficiency of the appliances used. They are not a guarantee of energy efficiency. The energy efficiency of the building and the energy efficiency of the appliances used may vary over time. The energy efficiency of the building and the energy efficiency of the appliances used may vary over time. The energy efficiency of the building and the energy efficiency of the appliances used may vary over time.

- 1 Bedroom purpose built Flat • 1st Floor
- Open-plan Sitting Room/ Dining Area
- Juliette balcony to front
- Allocated parking
- NO ONWARD CHAIN
- Council Tax Band: A

