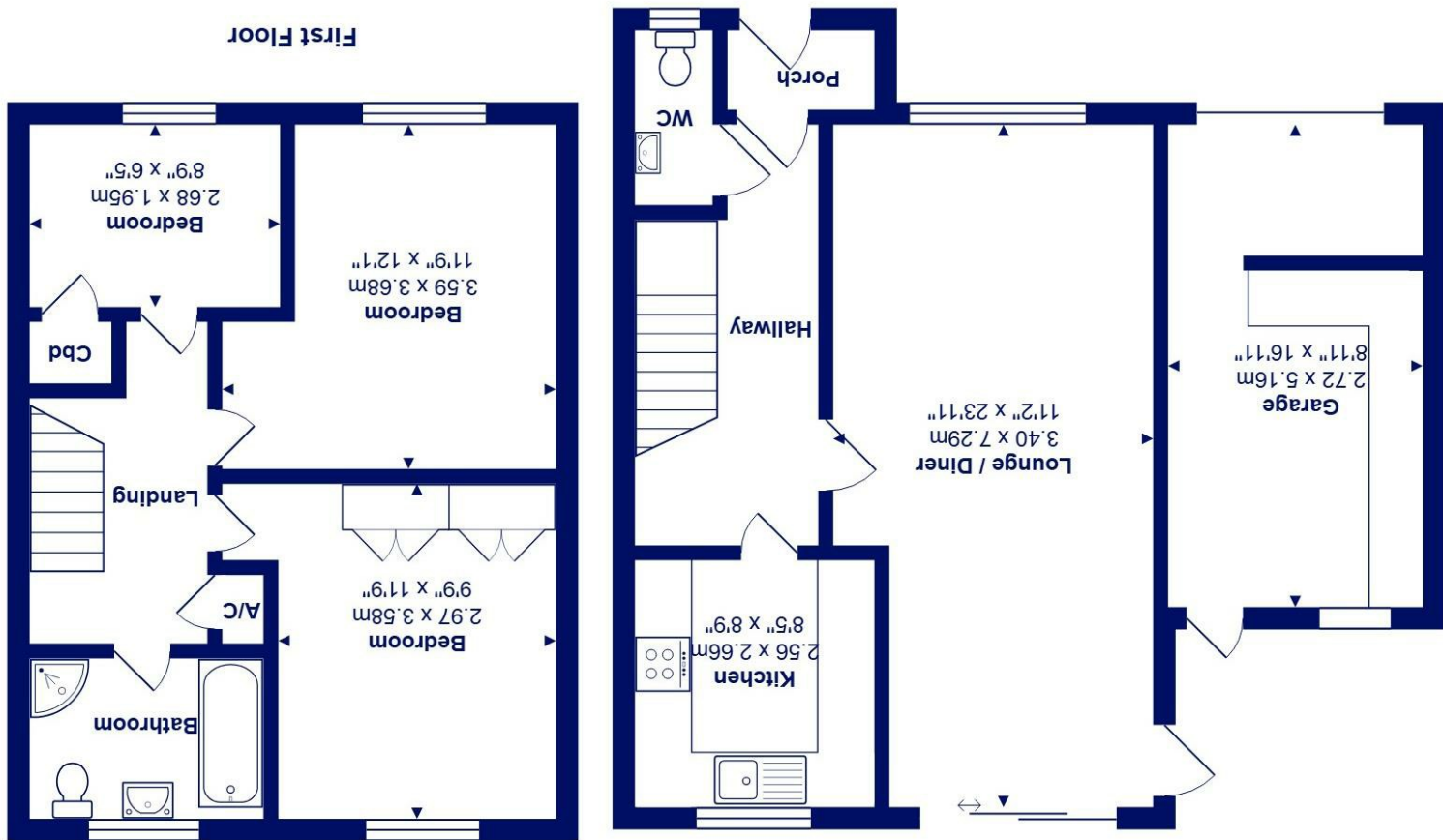




Total Area: 84.8 m<sup>2</sup> ... 913 ft<sup>2</sup> (excluding garage)  
All measurements are approximate and for display purposes only



Ground Floor



21 Bluebell Close, Highcliffe on Sea, BH23 4LW

£415,000

**Mitchells**  
1963 — TODAY

A well presented, semi-detached house of about 913 sq ft built to traditional standards by Hoburne and quietly situated in a peaceful part of the development and backing onto open space. Offered for sale with no forward chain, the property is ready to move into straight away.

- Fitted wardrobes to two of the first floor bedrooms
- Fully tiled family bathroom with separate shower cubicle
- Bright reception room with access to the garden
- Well fitted kitchen with a view of the back garden
- Quiet, popular development, close to the beach and Sainsburys
- Backs onto open space with garage and private driveway
- Recently redecorated, gas central heating and UPVC double glazing
- Quick possession available with no forward chain
- Potential to extend to the rear and over the garage (stpp)
- Viewing recommended

EPC Rating Band: D  
Council Tax Band: D  
Freehold

