

Rolfe East



Ridgeway, Sherborne, DT9 6DA

Asking Price £299,950

- EXTENDED TWO BEDROOM SEMI DETACHED BUNGALOW.
- SINGLE ATTACHED GARAGE AND DRIVEWAY PARKING FOR 2+ CARS.
- EXCELLENT FLOW OF NATURAL LIGHT FROM SOUTHERLY ASPECT AND LARGE WINDOWS.
- VACANT - NO FURTHER CHAIN.
- EXCELLENT RESIDENTIAL ADDRESS.
- uPVC DOUBLE GLAZING AND MAINS GAS FIRED RADIATOR CENTRAL HEATING.
- SHORT WALK TO NEARBY CONVENIENCE STORE AND COUNTRYSIDE.
- PRETTY, LEVEL, PRIVATE, SOUTH FACING GARDEN.
- LARGE CONSERVATORY / GARDEN ROOM EXTENSION.
- SHORT WALK TO SHERBORNE TOWN CENTRE AND RAILWAY STATION TO LONDON.

80 Cheap Street, Sherborne, Dorset, DT9 3BJ
01935 814 929

sherborne@rolfe-east.com
<https://www.rolfe-east.com/>

25 Ridgeway, Sherborne DT9 6DA

VACANT - NO FURTHER CHAIN. '25 Ridgeway' is a very well-presented, mature, semi-detached bungalow (967 square feet) situated in a favoured residential address on the western side of Sherborne, a short walk to the historic town centre, boutique high street and mainline railway station to London Waterloo. The property boasts a very pretty, level rear garden enjoying a southerly aspect and good privacy. It comes with a single attached garage plus off-road parking for two to three cars plus potential for more, subject to the necessary planning permission. The property offers mains gas fired radiator central heating and uPVC double glazing. With an excellent flow of natural light, this home must be viewed to be appreciated. The well-arranged, flexible accommodation is over a single storey and comprises entrance reception hall, sitting room / dining room, large conservatory / garden room, kitchen / breakfast room, two generous bedrooms and a family shower room. The property is a very short walk to nearby countryside and to nearby convenience stores. It is a short walk to the historic town centre of Sherborne with its superb boutique high street on the doorstep with cafes, restaurants, Waitrose store and independent shops plus the breath-taking Abbey, Almshouses and Sherborne's world-famous private schools. It is also a short walk to the mainline railway station to London Waterloo. Sherborne has recently won the award for the best place to live in the South West by The Times 2024. It also boasts 'The Sherborne' - a top class, recently opened arts and conference centre plus superb restaurant.



Council Tax Band: C



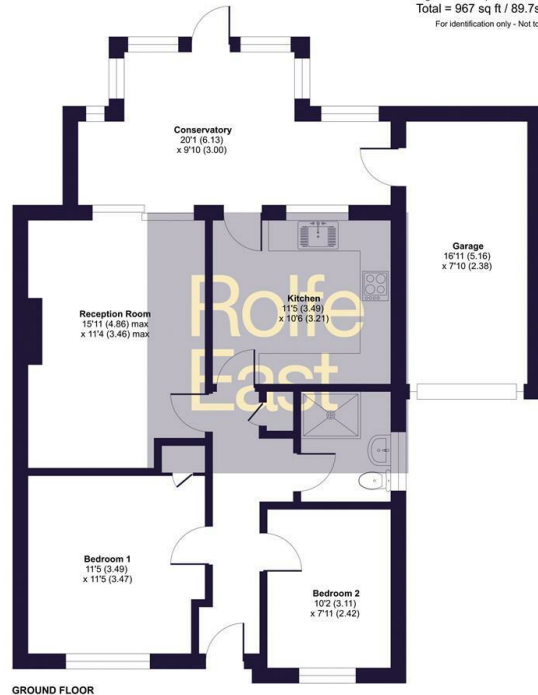




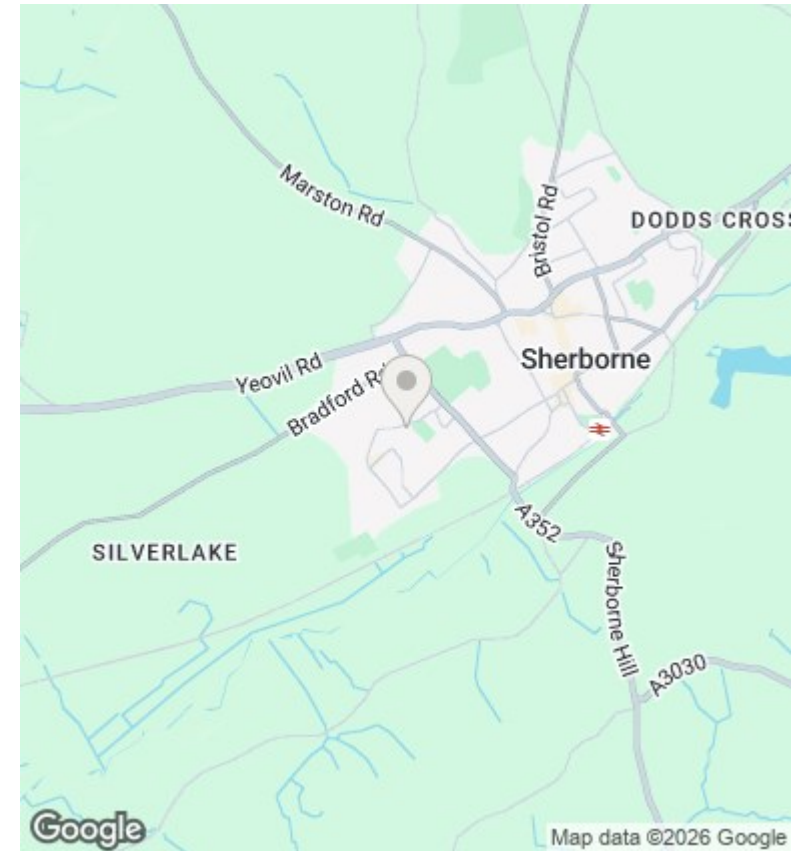


Ridgeway, Sherborne, DT9

Approximate Area = 835 sq ft / 77.5 sq m
 Garage = 132 sq ft / 12.2 sq m
 Total = 967 sq ft / 89.7sq m
 For identification only - Not to scale



ⓘ Floor plan produced in accordance with RICS Property Measurement 2nd Edition, incorporating International Property Measurement Standards (IPMS2 Residential). © ricolhome 2026. Provided for Rolfe East Sherborne Ltd. REF: 1498726



Directions

Viewings

Viewings by arrangement only. Call 01935 814 929 to make an appointment.

Council Tax Band

C

Energy Efficiency Rating		
	Current	Potential
<i>Very energy efficient - lower running costs</i>		
(92 plus) A		
(81-91) B		
(69-80) C		78
(55-68) D	66	
(39-54) E		
(21-38) F		
(1-20) G		
<i>Not energy efficient - higher running costs</i>		
England & Wales	EU Directive 2002/91/EC	