



Malvern Road, NW6

£576 Per week

In great condition throughout, this split level apartment benefits from two double bedrooms, two bathrooms, a large spacious open plan kitchen/living room and two South-west facing balconies.

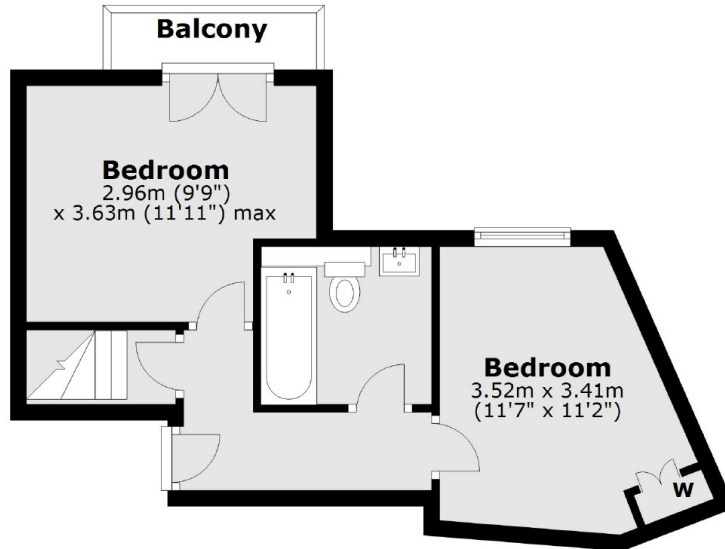
Ideally located across the road from Salisbury Road providing fantastic access to M&S, local cafés, restaurants and shops as well as Queens Park station and the Sunday Farmer's market.

Features

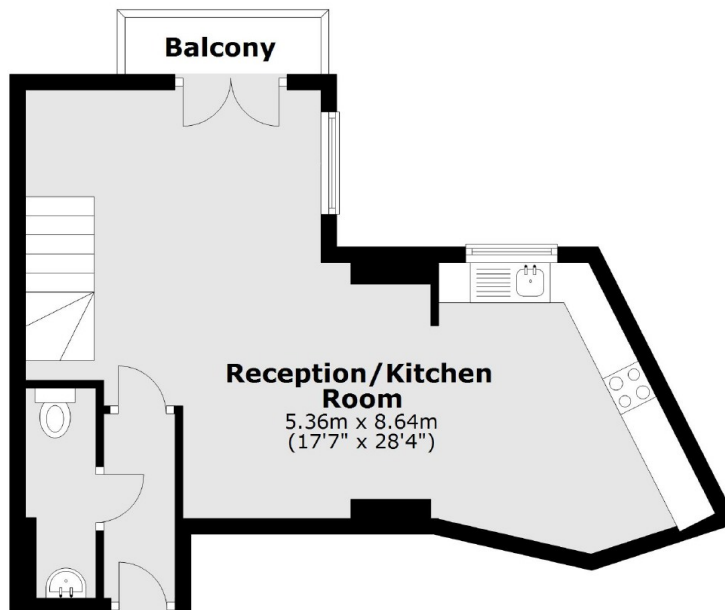
- Split Level
- Two Double Bedrooms
- Two Bathroom
- Open Plan
- Great Condition
- Two Balconies

Malvern Road,
London, NW6

Second Floor



Third Floor



Main area: Approx. 66.4 sq. metres (715.1 sq. feet)
Plus balconies, approx. 4.1 sq. metres (43.8 sq. feet)