



## HONITON ROAD, NW6

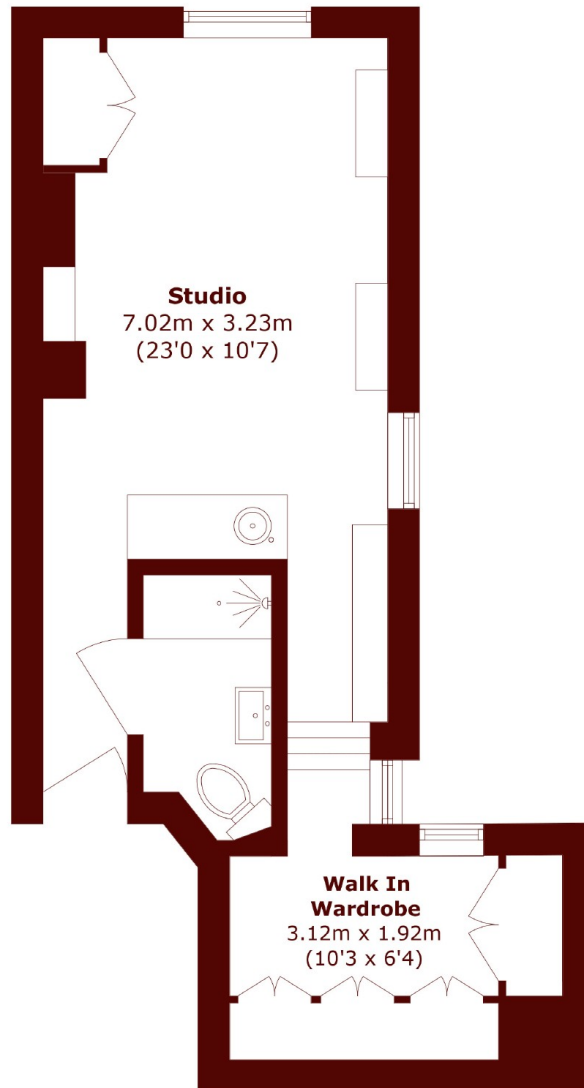
£350,000

A well-presented studio flat in good condition, ideally situated on one of Queen's Park's premier roads. This charming property offers a bright living room, stylish bathroom, an array of built in storage and a large

Great Condition  
Excellent Storage  
Quiet Street

Close to Salusbury Road  
Share of Freehold  
Local Transport Links

# STEP INSIDE HONITON ROAD



Total area (approx.): 29.9 sq. m (321.8 sq. ft)

**Queen's Park**  
020 7624 4513

Energy Rating: C We aim to make our particulars both accurate and reliable. However, they are not guaranteed; nor do they form part of an offer or contract. If you require clarification on any points then please contact us, especially if you're traveling some distance to view. Please note that appliances and heating systems have not been tested and therefore no warranties can be given as to their good working order

**MARSH &  
PARSONS**