



Dresden Drive, Waterlooville PO8 8RN

welcome to

Dresden Drive, Waterloo

Three-bed semi-detached home offered with no chain. Driveway, garage and wrap-around garden. Rear lounge with additional reception room, en-suite master with dressing room/home office, plus family bathroom. Close to amenities and schools.

Entrance Hall

Stairs leading to first floor. Doors to:

Cloakroom

Double glazed window to side aspect. Tiled walls, wash hand basin set over vanity unit, low level WC with enclosed cistern.

Kitchen

Double glazed window to side aspect. Range of wall and base units with work surface over incorporating sink unit with mixer tap over. Space for appliances, built-in low level oven with electric hob and extractor hood over. Wall mounted boiler, laminate flooring.

Lounge

Double glazed French doors leading to rear garden and double glazed window to rear aspect. Carpet flooring, two radiators

Bedroom Four

Double glazed French doors leading to rear garden. Laminate flooring, radiator.

First Floor Landing

Bedroom One

Double glazed window to rear aspect. Carpet flooring, radiator. Door to en-suite.

En-Suite

Double glazed window to front aspect. Suite comprising corner shower cubicle, pedestal wash hand basin and low level WC. Tiled floor, radiator.

Bedroom Two

Double glazed window to front aspect. Double wardrobe with mirror doors, radiator, carpet flooring.

Bedroom Three

Double glazed window to rear aspect. Carpet flooring, radiator.

Bedroom Five

Double glazed window to rear aspect. Carpet flooring, radiator.

Bathroom

Double glazed window to front aspect. Suite comprising panel enclosed bath with shower over, pedestal wash hand basin and low level WC. Tiled floor, heated towel rail.

Outside

Front

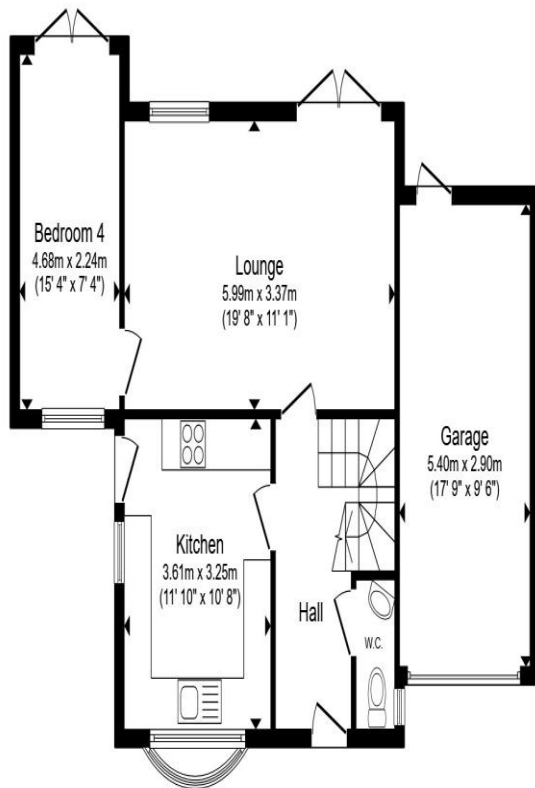
Block paved frontage providing off road parking and leading to garage.

Garage

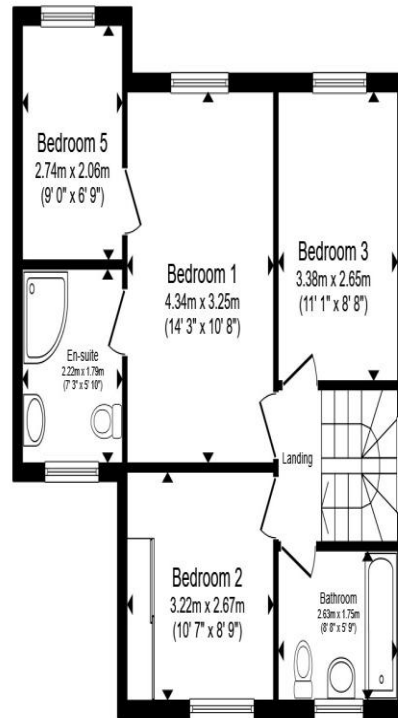
Up and over door with personal door leading to rear garden.

Rear Garden

Enclosed by panel fencing, laid to lawn with patio area.



Ground Floor



First Floor

Total floor area 123.8 m² (1,332 sq.ft.) approx

This floor plan is for illustrative purposes only. It is not drawn to scale. Any measurements, floor areas (including any total floor area), openings and orientation are approximate. No details are guaranteed, they cannot be relied upon for any purpose and they do not form part of any agreement. No liability is taken for any error, omission or misstatement. A party must rely upon its own inspection(s). Powered by www.propertybox.io



welcome to
Dresden Drive,
Waterlooville

- No Forward Chain
- Three Bedroom Semi Detached
- Garage & Off Road Parking
- Wrap Around Garden
- En-Suite To Master Bedroom

Tenure: Freehold EPC Rating: C
Council Tax Band: D

£375,000



view this property online fox-and-sons.co.uk/Property/WLV109680



Property Ref:
WLV109680 - 0003

1. MONEY LAUNDERING REGULATIONS Intending purchasers will be asked to produce identification documentation at a later stage and we would ask for your co-operation in order that there is no delay in agreeing the sale. 2. These particulars do not constitute part or all of an offer or contract. 3. The measurements indicated are supplied for guidance only and as such must be considered incorrect. Potential buyers are advised to recheck measurements before committing to any expense. 4. We have not tested any apparatus, equipment, fixtures or services and it is in the buyers interest to check the working condition of any appliances. 5. Where an EPC, or a Home Report (Scotland only) is held for this property, it is available for inspection at the branch by appointment. If you require a printed version of a Home Report, you will need to pay a reasonable production charge reflecting printing and other costs. 6. We are not able to offer an opinion either written or verbal on the content of these reports and this must be obtained from your legal representative. 7. Whilst we take care in preparing these reports, a buyer should ensure that his/her legal representative confirms as soon as possible all matters relating to title including the extent and boundaries of the property and other important matters before exchange of contracts.

Fox & Sons is a trading name of Sequence (UK) Limited which is registered in England and Wales under company number 4268443, Registered Office is Cumbria House, 16-20 Hockliffe Street, Leighton Buzzard, Bedfordshire, LU7 1GN. VAT Registration Number is 500 2481 05.

fox & sons



023 9226 2447



Waterlooville@fox-and-sons.co.uk



81B London Road, WATERLOOVILLE,
Hampshire, PO7 7ES



fox-and-sons.co.uk