

10 Martello Gardens  
Cochrane Park  
Newcastle upon Tyne  
NE7 7LD

Offers Over  
£360,000

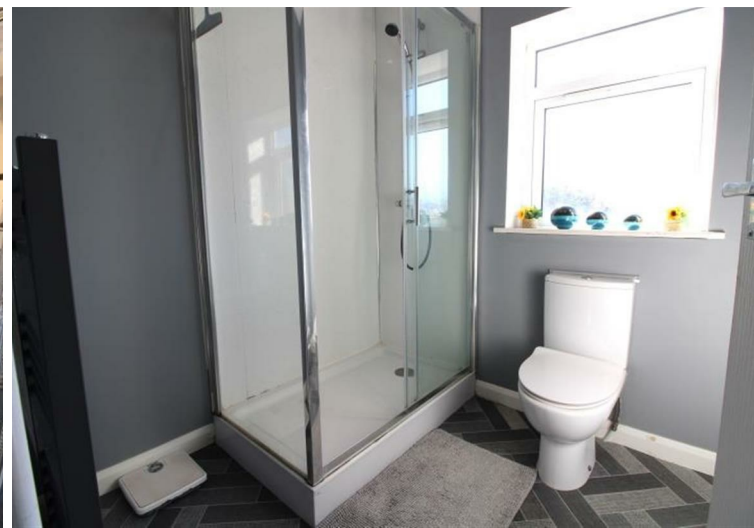


10 Martello Gardens  
Cochrane Park  
Newcastle upon Tyne  
NE7 7LD

- 4 Bedroom Extended Semi Detached House
- Conservatory
- En-suite to Bedroom 1
- Gas Central Heating
- Council Tax Band C

- Great Open Plan Living to the Rear
- South Facing Rear Garden
- Downstairs W/C
- Sealed Unit Double Glazed Windows
- EPC TBC





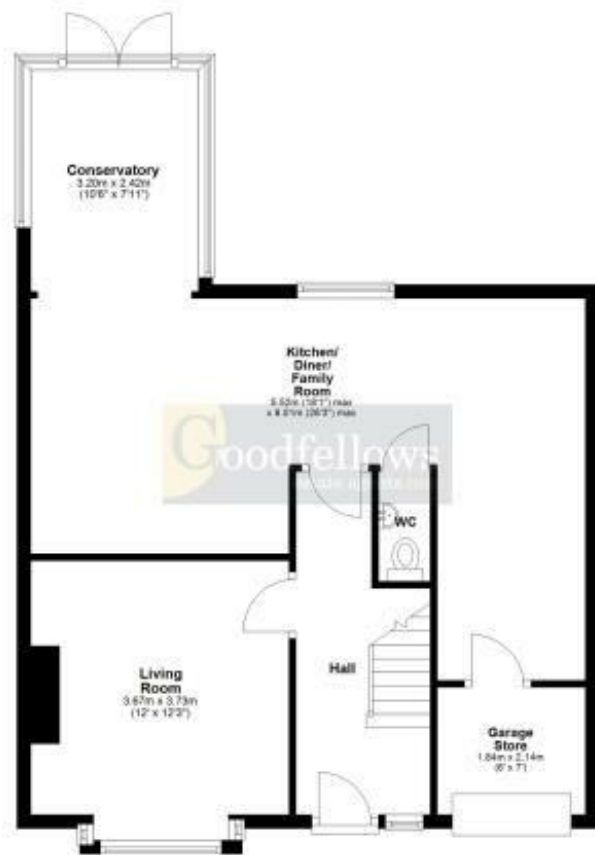


10 Martello Gardens, Cochrane Park, Newcastle upon Tyne, NE7 7LD



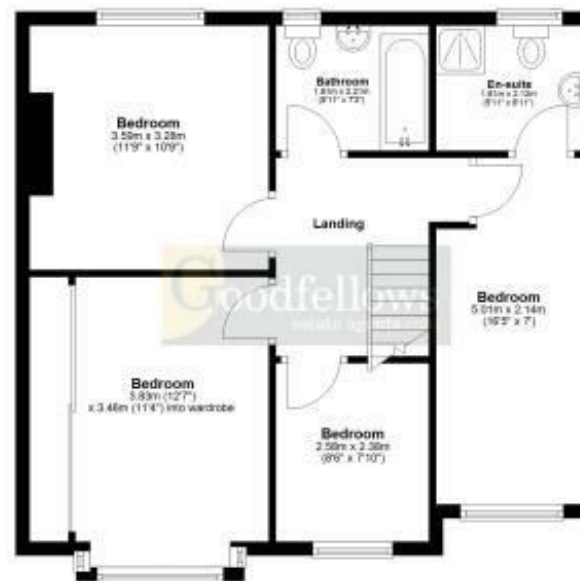
### Ground Floor

Approx. 68.5 sq. metres (737.1 sq. feet)



### First Floor

Approx. 59.9 sq. metres (644.7 sq. feet)



Total area: approx. 128.4 sq. metres (1381.8 sq. feet)

Whilst every attempt has been made to ensure the accuracy of the floor plan contained here, measurements of doors, windows, rooms and any other items are approximate and no responsibility is taken for any error, omission, or mis-statement. The Plan is for illustrative purposes only. Version 1

Plan produced using PlanUp.

EPC Rating: D  
Council Tax Band: C

Whilst every care has been taken to prepare these particulars, they are for guidance purposes only. All measurements are approximate and whilst every care has been taken to ensure their accuracy, they should not be relied upon and potential buyers/tenants are advised to recheck the measurements. The agent has not tested any equipment, services, fixtures or fittings and makes no representation regarding their condition.

#### CONTACT

246 Chilingham Road, Heaton,  
Newcastle upon Tyne, NE6 5LQ

E: [heaton@goodfellowsestateagents.com](mailto:heaton@goodfellowsestateagents.com)  
T: 0191 2654400

**Goodfellows**  
estate agents.com