



Warwick Gardens, W14

£2,950 Per calendar month

A large one bedroom apartment on the fifth floor of a beautiful mansion block in W14. The flat has wooden floors throughout and is west facing so has loads of sunlight throughout the day. The kitchen and bathroom are very modern and there are floor to ceiling wardrobes in the bedroom.

St. Mary Abbots Court location is within close proximity to all amenities of Kensington, Chelsea and Holland Park.

Features

- Modern Finish
- Portered Block
- Wooden Floors Throughout
- Communal Gardens
- Fully Furnished
- Heating and Hot water Included

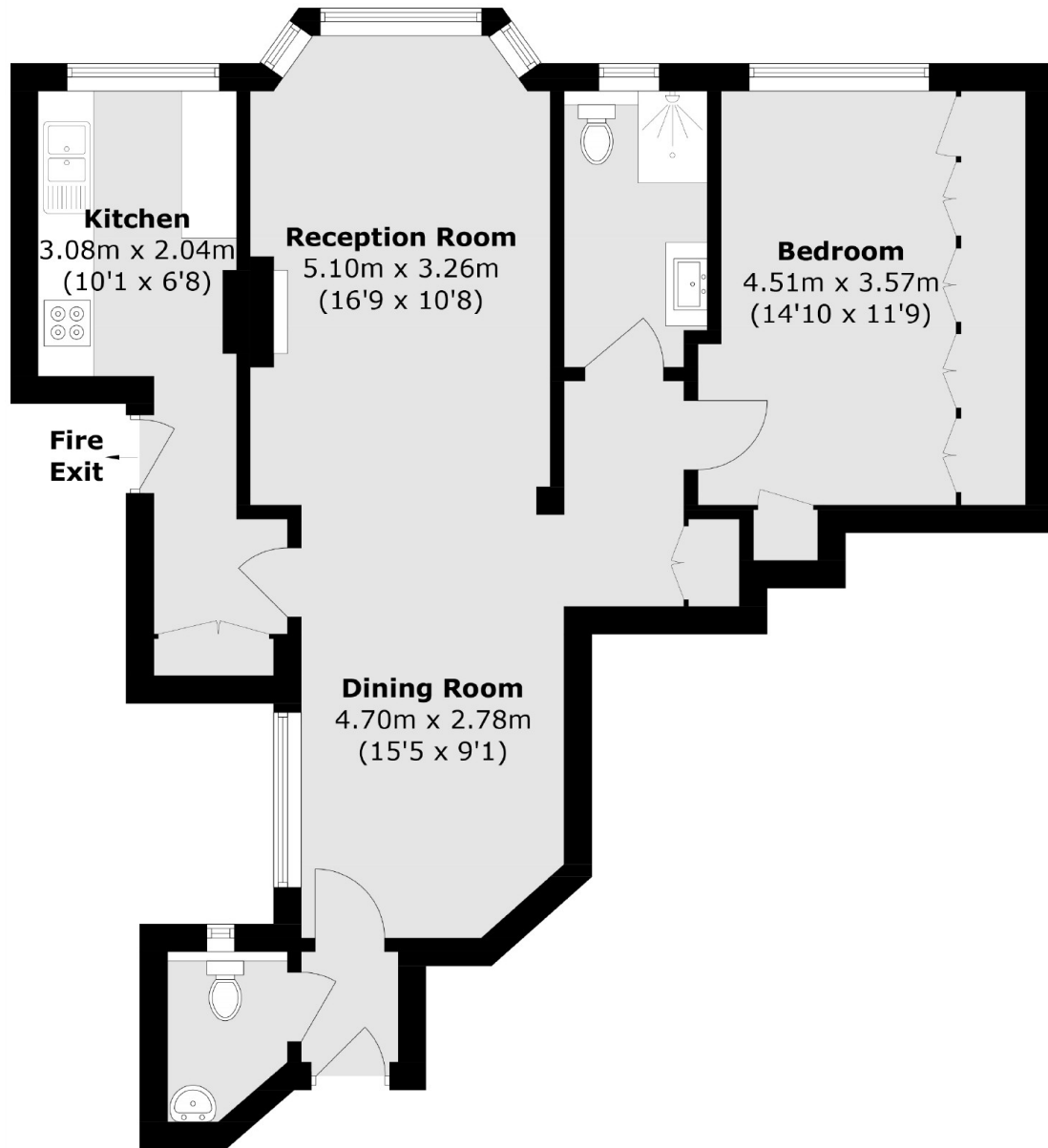


Warwick Gardens, W14

The apartment also comes with access to a large, well maintained communal garden.



Warwick Gardens,
London, W14



Total area (approx.): 70.4 sq. m (757.8 sq. ft)