

# EDEN HOMES



**428 Durnsford Road, London, SW19 8DZ**

**Asking price £650,000**

We are delighted to offer this new refurbished split level apartment to the market. The property comprises three double bedrooms, two bathrooms one of which is en-suite and a large modern open plan kitchen living room with feature bay window. This home boasts of light and space throughout and has been finished to a high specification. This property is conveniently located with good transport links, local shops and amenities, bars and restaurants close by. The property is offered with a SHARE OF FREEHOLD 999 year lease, no service charge or ground rent currently so will be agreed with the other freeholder as advised.









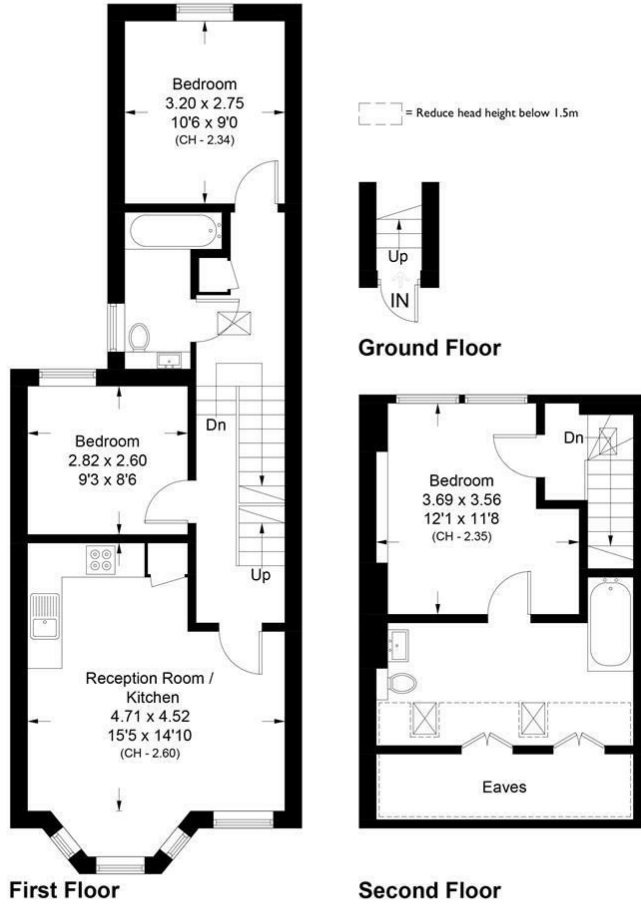




# Floor Plan

## Durnsford Road, SW19

Approximate Area = 86.2 sq m / 928 sq ft  
Including Limited Use Area / Eaves (9.1 sq m / 98 sq ft)

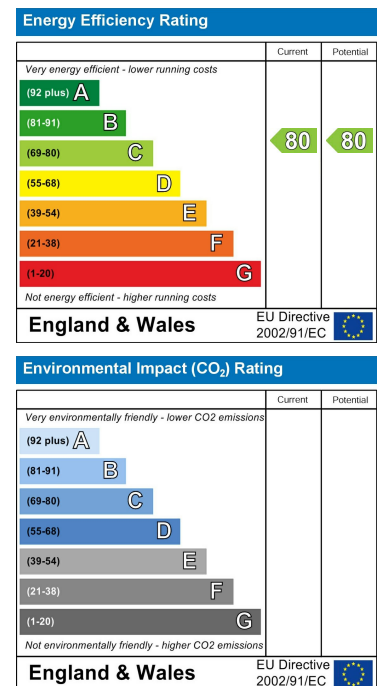


Surveyed and drawn in accordance with the International property measurements standards (IPMS 2: Residential) Not drawn to scale unless stated. Whilst every care is taken in the preparation of this plan, please check all dimensions, shapes and compass bearings before making any decisions reliant upon them.

# Area Map



# Energy Efficiency Graph



These particulars, whilst believed to be accurate are set out as a general outline only for guidance and do not constitute any part of an offer or contract. Intending purchasers should not rely on them as statements of representation of fact, but must satisfy themselves by inspection or otherwise as to their accuracy. No person in this firm's employment has the authority to make or give any representation or warranty in respect of the property.