



Bailey Crescent

Guide Price £340,000 to £350,000

- Spacious Three bedroom Detached Family Home
- Single Garage, Driveway, Allocated and Guest Parking and EV Charger
- En-Suite to Master, Downstairs WC and Family Bathroom
- Utility Room
- Two Reception Rooms
- Enclosed Rear Garden



 3  1  2

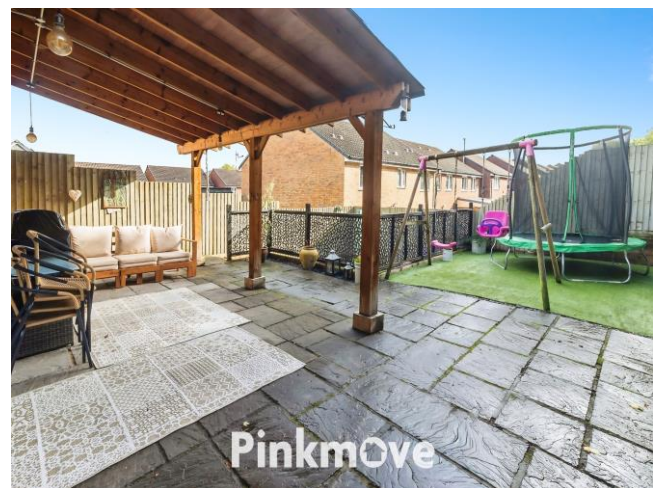
Pinkmove

01633 746088
team@pinkmove.co.uk



About the property

Nestled in the sought-after enclave of Bailey Crescent, Langstone, this spacious and stylish three-bedroom detached home delivers flexible living in one of the area's most desirable residential areas. From the moment you step into the bright entrance hall, the home exudes warmth and sophistication. The front-facing kitchen is a hub for everyday cooking and effortless entertaining, while the expansive rear living room opens directly onto a fully enclosed, low-maintenance garden, complete with a charming pergola that invites relaxation and alfresco gatherings. A separate dining room offers a dedicated space for family meals, and the utility room provides seamless internal access to the single garage. A convenient downstairs WC rounds off the ground floor with practicality. Upstairs, you'll find three generously sized double bedrooms, including a master suite with its own en-suite bathroom, alongside a sleek and modern family bathroom. Outside, the property impresses with a private driveway, an additional designated parking space at the front, and Single Garage. For eco-conscious homeowners, the EV charger on the driveway adds a forward-thinking touch. Langstone itself is a perfect blend of tranquillity and connectivity. Langstone Primary School is just 0.6 miles away, while Llanwern High School sits approximately 2.5 miles from your doorstep. Everyday essentials and local amenities are within easy reach, and Newport city centre is a short 15-minute drive.





Accommodation

Living Room

14' 3" x 12' 4" (4.34m x 3.76m)
Max Measurements

Dining Room

9' 7" x 10' 1" (2.92m x 3.07m)

Kitchen

10' 2" x 8' 7" (3.10m x 2.62m)

Utility

8' 3" x 9' 10" (2.51m x 3.00m)
Max Measurements

Garage

10' 11" x 10' (3.33m x 3.05m)

Downstairs Wc

3' 5" x 8' 6" (1.04m x 2.59m)

Bedroom 1

12' 2" x 8' 10" (3.71m x 2.69m)

Bedroom 2

8' 10" x 10' 5" (2.69m x 3.17m)

Bedroom 3

9' 8" x 8' 9" (2.95m x 2.67m)

Bathroom

6' 10" x 10' 11" (2.08m x 3.33m)
Max Measurements

En-Suite Shower Room

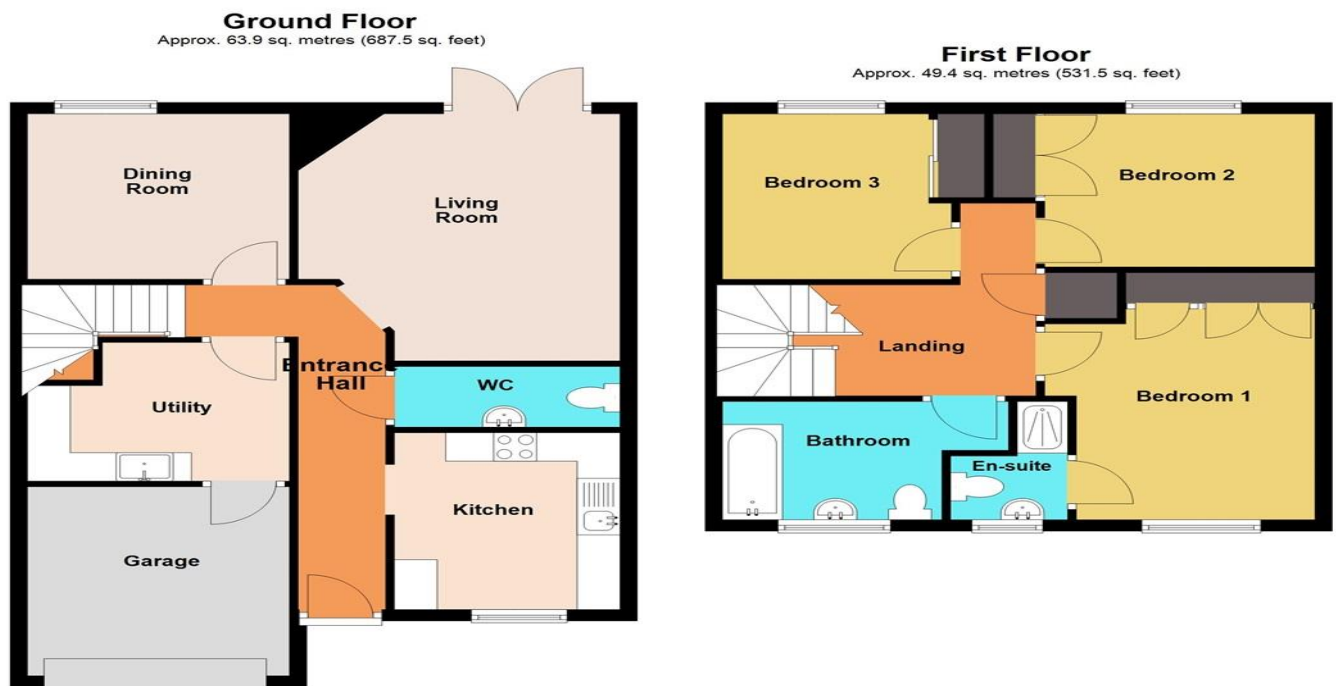
6' 8" x 4' 3" (2.03m x 1.30m)

01633 746088

team@pinkmove.co.uk

Pinkmove

Floorplan



Total area: approx. 113.2 sq. metres (1219.0 sq. feet)
10 Bailey Crescent

Important Information

Note while we endeavour to make our sales details accurate and reliable, if there is any point which is of particular interest to you, please contact the office and we will be pleased to confirm the position for you. We have not personally tested any apparatus, equipment, fixtures, fittings or services and cannot verify they are in working order or fit for their purposes. Nothing in these particulars is intended to indicate that carpets or curtains, furnishings or fittings, electrical goods (whether wired or not). Gas fires or light fittings or any other fixtures not expressly included form part of the property offered for sale. This computer generated Floorplan, if applicable, is intended as a general guide to the layout and design of the property. It is not to scale and should not be relied upon for dimensions. Tenure: We cannot confirm the tenure of the property as we have not had access to the legal documents. The buyer is advised to obtain verification from their solicitor or surveyor.

Peter Alan Limited is registered in England and Wales under company number 2073153, Registered Office is Cumbria House, 16-20 Hockliffe Street, Leighton Buzzard, Bedfordshire, LU7 1GN. VAT Registration Number is 500 2481 05. For activities relating to regulated mortgages and non-investment insurance contracts, Peter Alan Limited is an appointed representative of Connells Limited which is authorised and regulated by the Financial Conduct Authority. Connells Limited's Financial Services Register number is 302221. Most buy-to-let

