



## Espalier Gardens, NW6

£799,950

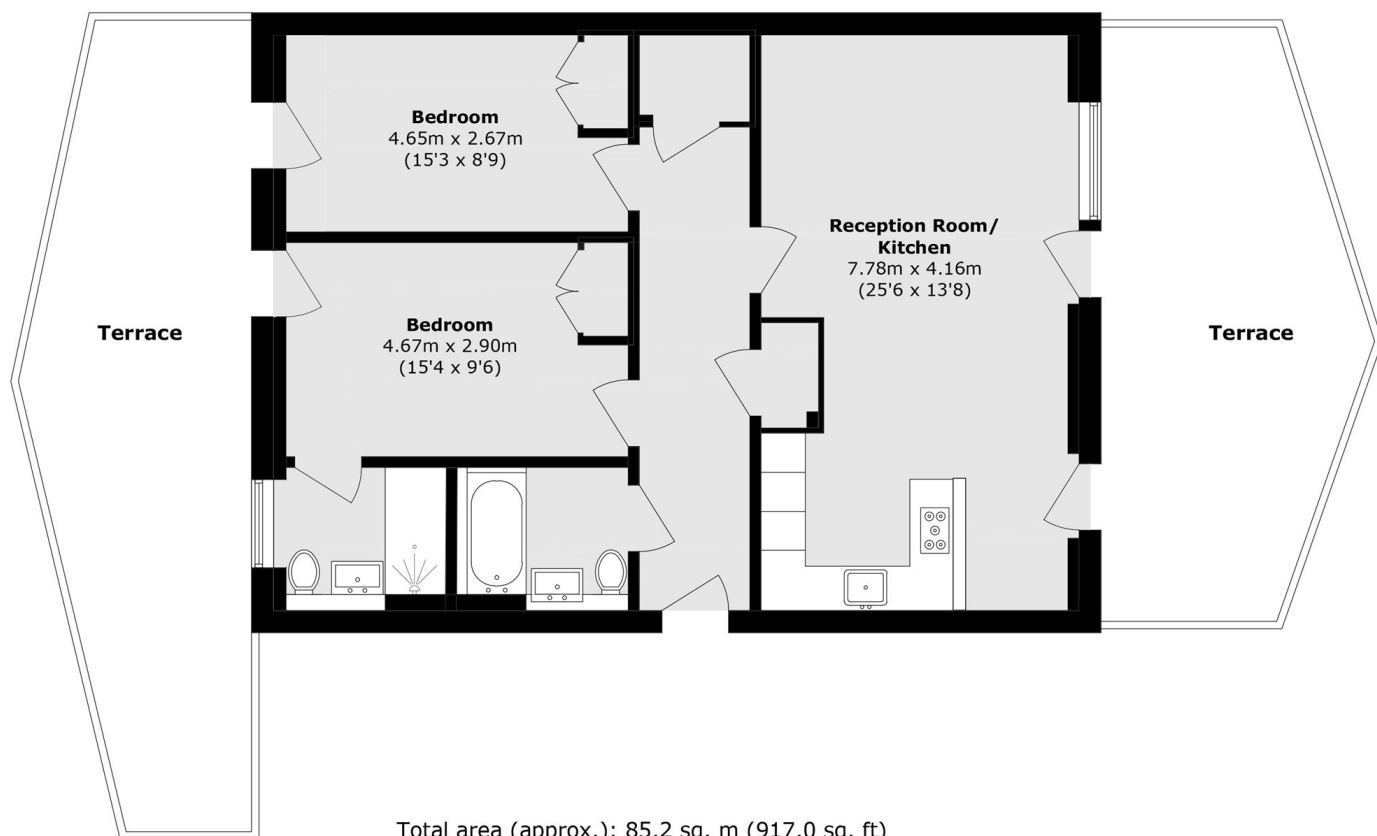
Perched on the top floor of a stylish gated development, this stunning apartment boasts two private terraces and a sleek open-plan kitchen/reception, ideal for modern living. It features two spacious double bedrooms with built-in wardrobes, lift access, and concierge service, offering both comfort and convenience. Offered with no onward chain and a share of freehold.

Excellent transport links nearby include West Hampstead (Jubilee Line, London Overground, Thameslink) and Brondesbury Station, connecting you swiftly to central London and beyond.

### Features

- Two Bedrooms
- Two Terraces
- Modern Apartment
- Open Plan
- Two Bathrooms
- Concierge

# Espalier Gardens, London, NW6



Total area (approx.): 85.2 sq. m (917.0 sq. ft)

Terrace area (approx.): 52.3 sq. m (562.9 sq. ft)