



Queens Road

Thames Ditton, KT7 0QY

£699,950

A stunning period cottage on a highly popular river road location in Thames Ditton. Beautifully presented to a high standard, perfect for those looking to settle in a desirable residential area. The property features a cosy front reception room with wood burner, bespoke fitted shelving and cupboards - this leads to a contemporary open plan kitchen/dining room with industrial style exposed steels and striking Crittal glazed doors to a west facing garden. The area between these rooms has been cleverly adapted to house utility space and WC. Upstairs is the principal bedroom with ensuite bathroom and wall-to-wall wardrobes. Opposite is a further double bedroom with ensuite shower room and desk space. Close proximity to train station, excellent schools, gastro riverside pub, local recreation ground and other green spaces such as Bushy Park.

- Period property with contemporary flair
- Open plan kitchen/dining room
- West facing garden with raised planters
- Near recreation ground, shop and amenities
- River road location
- 2 double bedrooms, 2 bathrooms
- Scope to extend into loft STPP
- 0.6m to train station

Floor Plan

Queens Road

Approximate Gross Internal Area
75.0 sq m / 807 sq ft

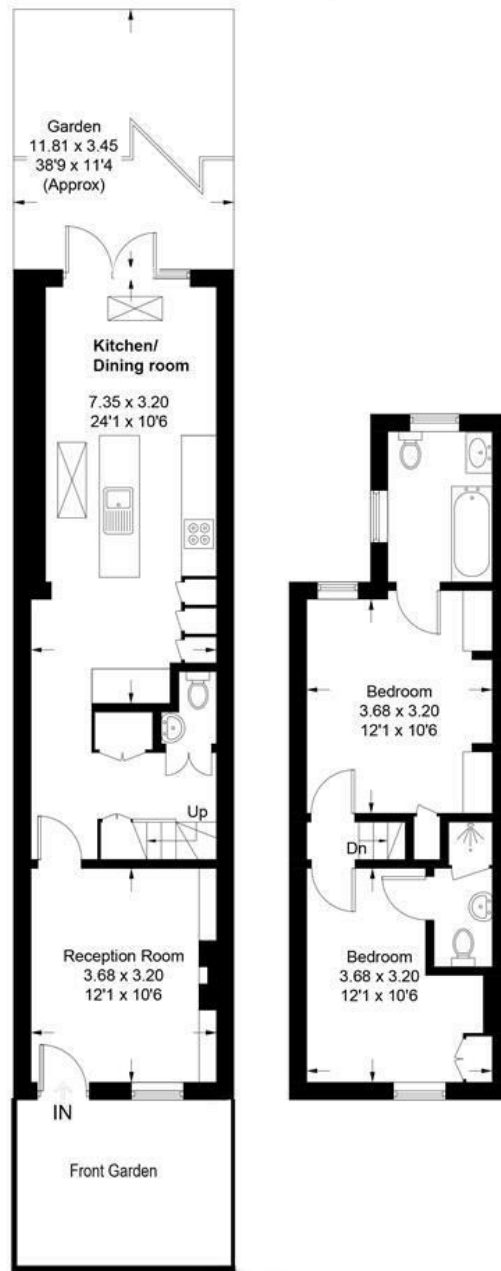
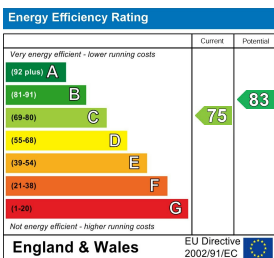


Illustration for identification purposes only, measurements are approximate, not to scale. Fourlabs.co © (ID1268883)

Energy Efficiency Graph



These particulars, whilst believed to be accurate are set out as a general outline only for guidance and do not constitute any part of an offer or contract. Intending purchasers should not rely on them as statements of representation of fact, but must satisfy themselves by inspection or otherwise as to their accuracy. No person in this firm's employment has the authority to make or give any representation or warranty in respect of the property.