



Roland Gardens, SW7

£692 Per week

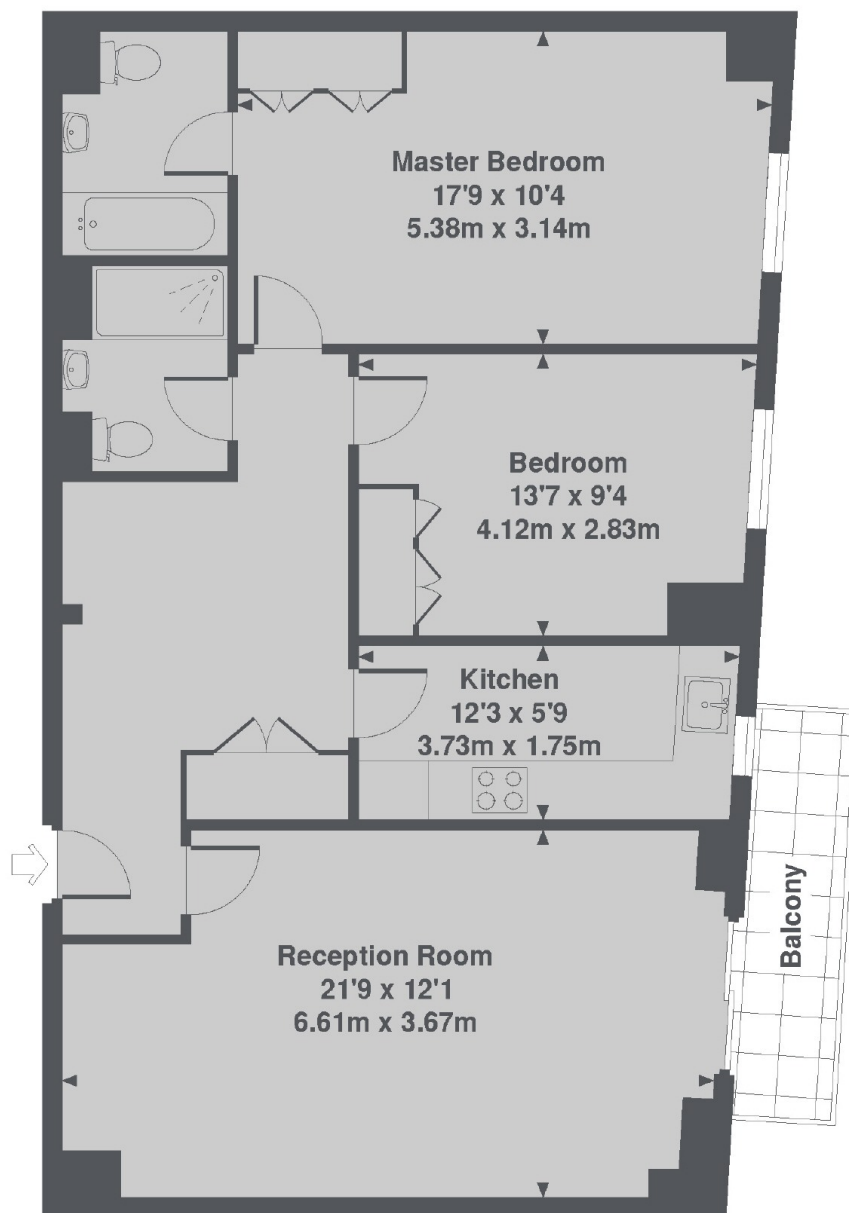
A modern two bedroom flat situated in one of South Kensington's most attractive red-brick mansion buildings. The property features two well-sized double bedrooms, making it ideal for sharers, and includes a generously sized private balcony suitable for a table and chairs.

Cedarland Court is conveniently located close to Gloucester Road, offering a wide selection of shops and restaurants, including a Waitrose supermarket, Boots, Paul, and Starbucks. Gloucester Road Underground Station is the nearest transport link.

Features

- Two Double Bedrooms
- Private Balcony
- Second Floor
- Lift Access
- Large Living Room
- Gloucester Road Tube

Roland Gardens, London, SW7



1st Floor

Cedarland Court, Roland Gardens, SW7
Total Approx. Floor area 860 Sq. Ft. (79.9 Sq. M.)