

**OVER 60?**

Secure this property  
for up to **59% less!**



**Guide Price**

**£725,000**

**Freehold**

5x  3x  2x 

Bromley Green Road, Ashford, Kent, TN26

*Wards*  
Helping you move forwards





**Ground Floor**  
Approx. 113.9 sq. metres (1225.7 sq. feet)

## Main features

- Driveway parking for 8 cars
- Popular semi rural location on a sought after road
- Versatile living with the separate office space
- Oak wine cupboard featured underneath the stairs
- Large rear garden including an insulated cabin

## Accommodation

### GROUND FLOOR

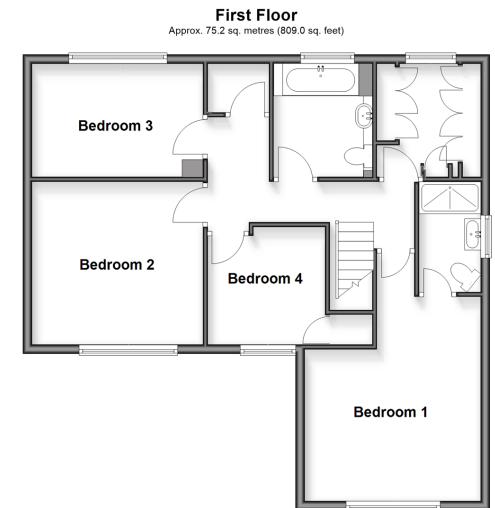
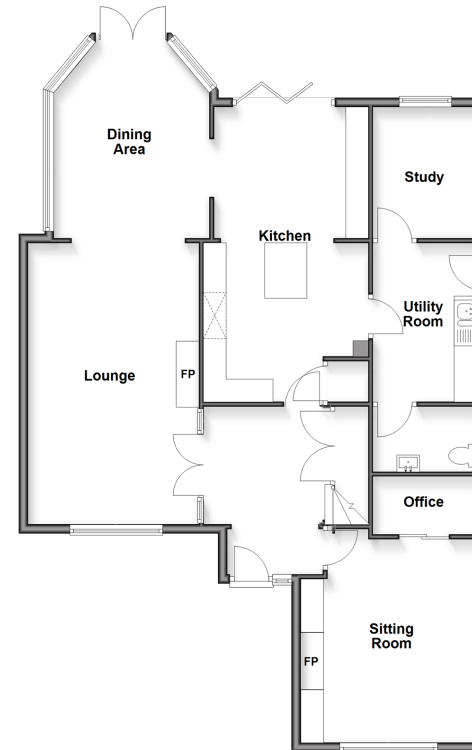
Entrance Hall  
Sitting Room: 14'7" x 10'8" (4.45m x 3.25m)  
Office of Sitting Room : 7'7" x 4'2" (2.31m x 1.27m)  
Lounge: 20'3" x 12'4" (6.18m x 3.76m)  
Dining Room: 14'5" x 12'0" (4.40m x 3.66m)  
Kitchen: 22'0" x 12'1" (6.71m x 3.69m)  
Utility: 12'0" x 8'5" (3.66m x 2.57m)  
Office: 9'4" x 8'1" (2.85m x 2.47m)

### FIRST FLOOR

Landing  
Storage Cupboard: 8'0" x 6'6" (2.44m x 1.98m)  
Bathroom : 8'0" x 7'1" (2.44m x 2.16m)  
Bedroom 3: 12'4" x 8'6" (3.76m x 2.59m)  
Bedroom 2: 11'3" x 11'3" (3.43m x 3.43m)  
Bedroom 4 : 8'6" x 8'3" (2.59m x 2.52m)  
Bedroom 1 : 14'6" x 13'1" (4.42m x 3.99m)  
En-Suite Shower Room: 8'4" x 5'2" (2.54m x 1.58m)

### OUTSIDE

Rear Garden  
Driveway



**Call Ashford - 01233 639531 ■ [wardsofkent.co.uk](http://wardsofkent.co.uk)**

■ Legal advice should be taken to verify fixtures/fittings, planning, alterations and/or lease details  
■ Through a Homewise Home For Life Plan people aged 60+ can secure this property for up to 50% less, by purchasing a Lifetime Lease.

■ Appliances & services are untested, dimensions are approximate and floor plans are not to scale



12237024/20251129/TT/RB