

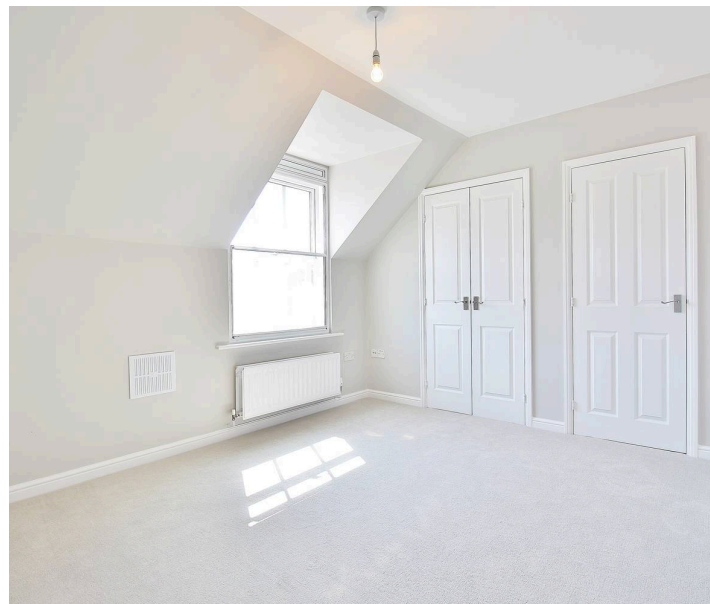


## White Lodge Close

Isleworth, TW7

£650,000

Situated within a quiet cul-de-sac, this well presented three double bedroom townhouse is ideally located for access to a range of public transport, a choice of excellent local schools, the shops, cafes and bars of Old Isleworth and the Thames Riverside. Offer to the market chain free, the ground floor accommodation offers a spacious hallway, good sized kitchen, utility room, conservatory and integral garage. The first floor offers a bright and spacious reception room with juliette balcony and a double bedroom with a built in wardrobe and ensuite shower room. The second floor provides a large principal bedroom with ample built in storage and en-suite shower room, a third double bedroom and a family bathroom. Externally the property offers driveway parking and a well kept private rear garden. Further benefits include a downstairs WC, gas central heating and double glazing throughout.

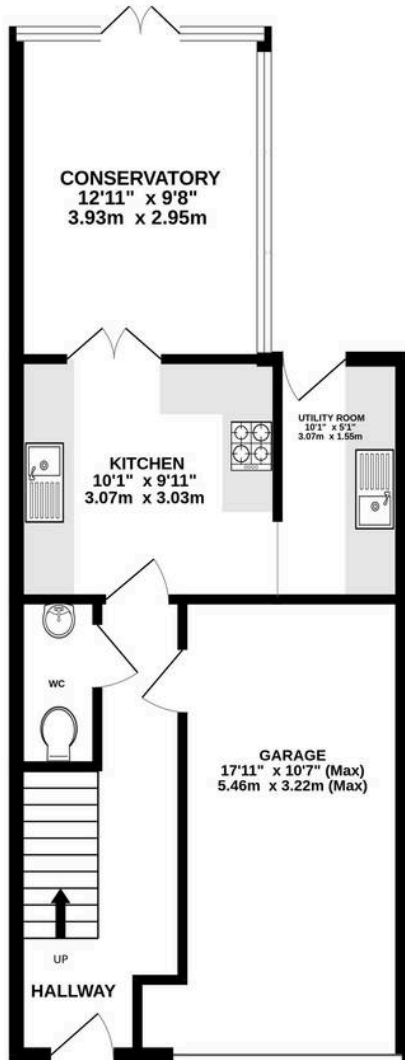


- No Forward Chain
- Integral Garage
- Three Double Bedrooms
- Driveway Parking
- Three Bathrooms
- Quiet Cul-de-Sac Location
- Utility Room

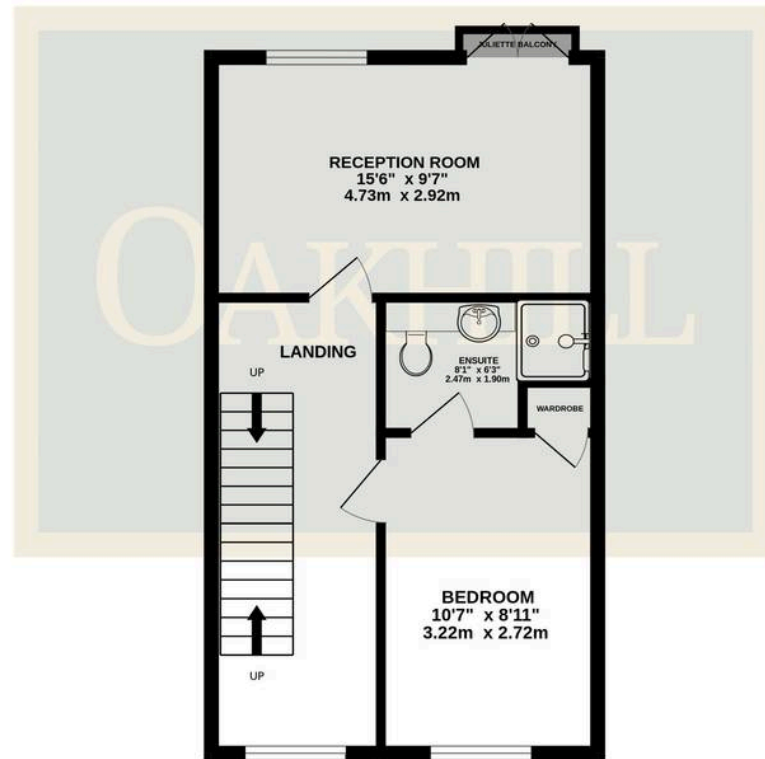
SCAN HERE  
FOR  
PROPERTY  
DETAILS



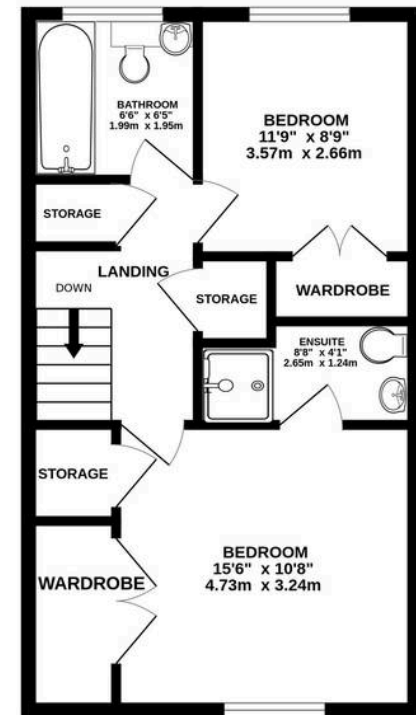
GROUND FLOOR



1ST FLOOR



2ND FLOOR



Whilst every attempt has been made to ensure the accuracy of the floorplan contained here, measurements of doors, windows, rooms and any other items are approximate and no responsibility is taken for any error, omission or mis-statement. This plan is for illustrative purposes only and should be used as such by any prospective purchaser. The services, systems and appliances shown have not been tested and no guarantee as to their operability or efficiency can be given.  
 Made with Metropix ©2026