



# Bechwood Close, Tadworth

£1,395,000





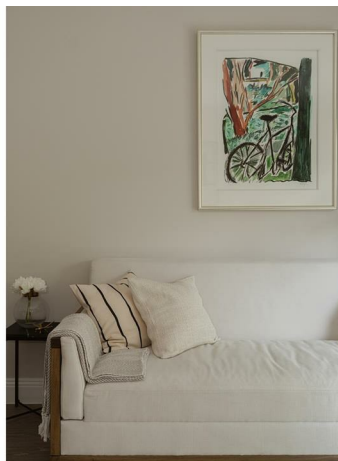


“

A boutique development of 4 and 5 bed detached family homes in one of Surrey's most iconic villages.

”





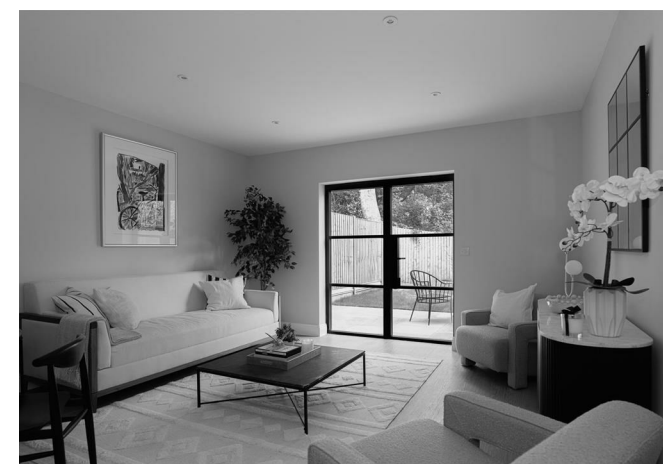
Plot 2, The Bechwood Collection is a beautifully designed five-bedroom detached family home, forming part of an exclusive development of just four architecturally crafted residences in the heart of Box Hill and benefiting from a 10-year insurance-backed Build-Zone warranty.

The ground floor offers impressive open-plan living, centred around a bespoke kitchen by Surrey-based Lime Designs, featuring premium appliances and finishes. Designed for modern family life and entertaining, the space flows seamlessly via bifold and patio doors to a fully landscaped garden with Indian sandstone patios. Amtico flooring, underfloor heating, and a feature log burner set within a limestone surround create warmth, comfort, and character throughout.

Upstairs, five well-proportioned bedrooms provide flexible accommodation, all fully carpeted, with contemporary bathrooms and en-suites finished with fully tiled ceramic walls and floors. Triple-glazed windows enhance natural light, energy efficiency, and comfort, while a boarded loft offers additional storage.

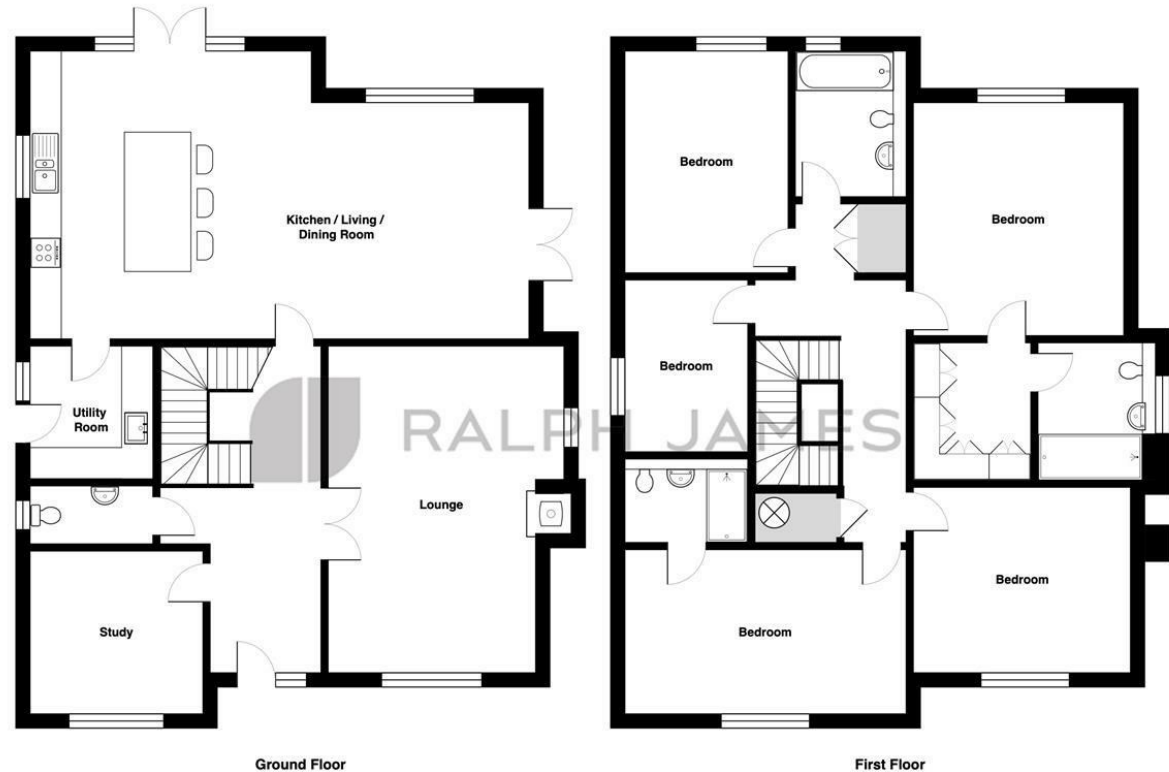
Externally, the property benefits from a double car barn with power, EV charging point, air source heat pump, intruder alarm, and external power and water connections.

An exceptional blend of style, sustainability, and practicality in a highly desirable village setting.



## Need to know

- Five bedrooms
- Detached
- Two reception rooms
- Master en-suite with further ensuite to guest bedroom
- Double car barn
- EV Charging point
- Air source heat pump
- 10 year build warranty



Ground Floor

First Floor

Plot 2 - Bechwood, Boxhill Road, Box Hill

Total Area: 237.0 m<sup>2</sup> ... 2551 ft<sup>2</sup>

FOR ILLUSTRATIVE PURPOSES ONLY.

Whilst every attempt has been made to ensure the accuracy of the floor plan shown, all measurements, positioning, fixtures, features, fittings and any other data shown are an approximate interpretation for illustrative purposes only and are not to scale.

No responsibility is taken for any error, omission, miss-statement or use of data shown.

The above statement applies to both 'Still Moving London LTD' and the Company or individual displaying this floor plan.

Unauthorised reproduction prohibited.

© Still Moving London LTD (www.stillmoving.london)



## Interested?

dorking@ralphjames.co.uk  
01306 284555

#

ralphjames.co.uk