

Frank Harris & Co.



Vauxhall Grove, SW8

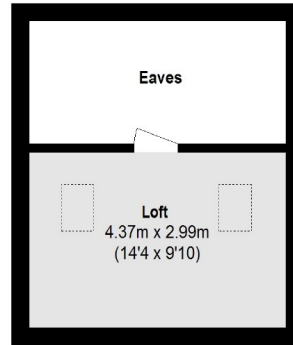
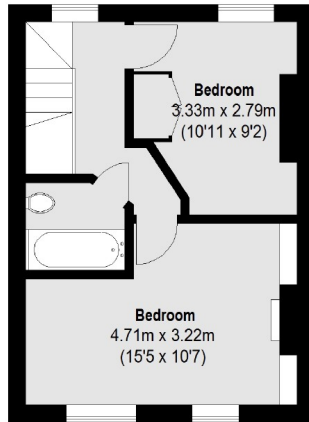
£923 pcm

Unique property located on a tree lined street in the heart of Vauxhall. The property consists of four double bedrooms, two bathrooms as well as a patio garden and first floor roof terrace.

The property is located within a 0.2 mile walk from Vauxhall station. Just around the corner is Bonnington Square Garden which is renowned for being a green oasis and quiet square in a very central London location. The square also benefits from a beautiful communal garden and a great deli.

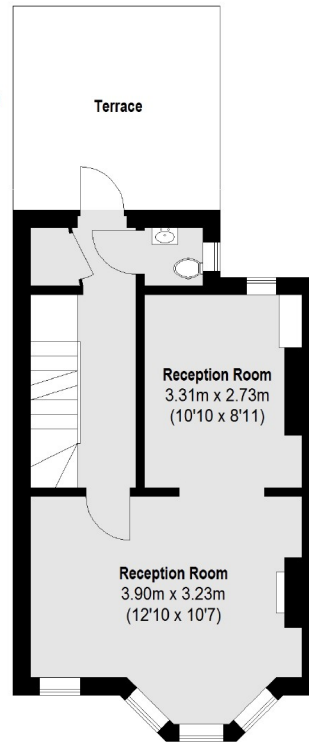
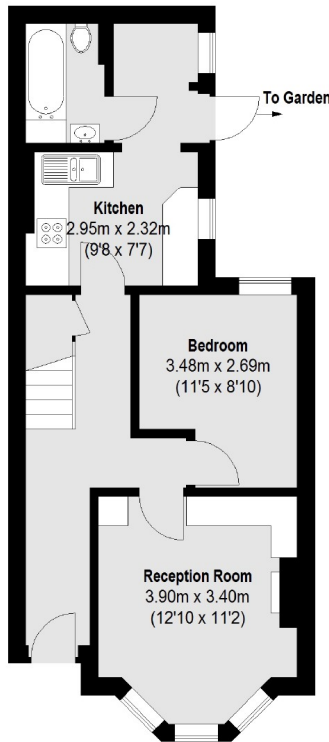
- Fantastic Location • Four Bedrooms • Patio Garden •
- Roof Terrace • Separate Kitchen •

Frank Harris & Co.



Second Floor

Loft



Ground Floor

First Floor

Total area (approx.): 110.94 sq. m (1194 sq. ft)
(Excluding Loft / Eaves)
Terrace: 12.42 sq. m (133 sq. ft)

Frank Harris & Co. South Bank and Waterloo
123 Stamford Street, London,
SE1 9NN
020 7590 7100
southbanklettings@frankharris.co.uk

Energy Rating: D. We aim to make our particulars both accurate and reliable. However they are not guaranteed; nor do they form part of an offer or contract. If you require clarification on any points then please contact us, especially if you're traveling some distance to view. Please note that appliances and heating systems have not been tested and therefore no warranties can be given as to their good working order.

