



MILE



Bravington Road, London W9

£495,000 Leasehold

Nestled on a quiet residential road in Westminster, this beautifully presented two-bedroom apartment offers a rare combination of tranquillity, space, and central London convenience.

Boasting its own private entrance, the property enjoys a heightened sense of privacy and individuality. Internally, the home is presented in excellent condition throughout, with generously proportioned accommodation enhanced by an abundance of natural light, creating a bright and welcoming atmosphere.

Further benefits include double glazed windows throughout, ensuring comfort and efficiency year-round. The spacious layout provides flexibility for both relaxing and entertaining, making it an ideal home for professionals, couples, or small families.

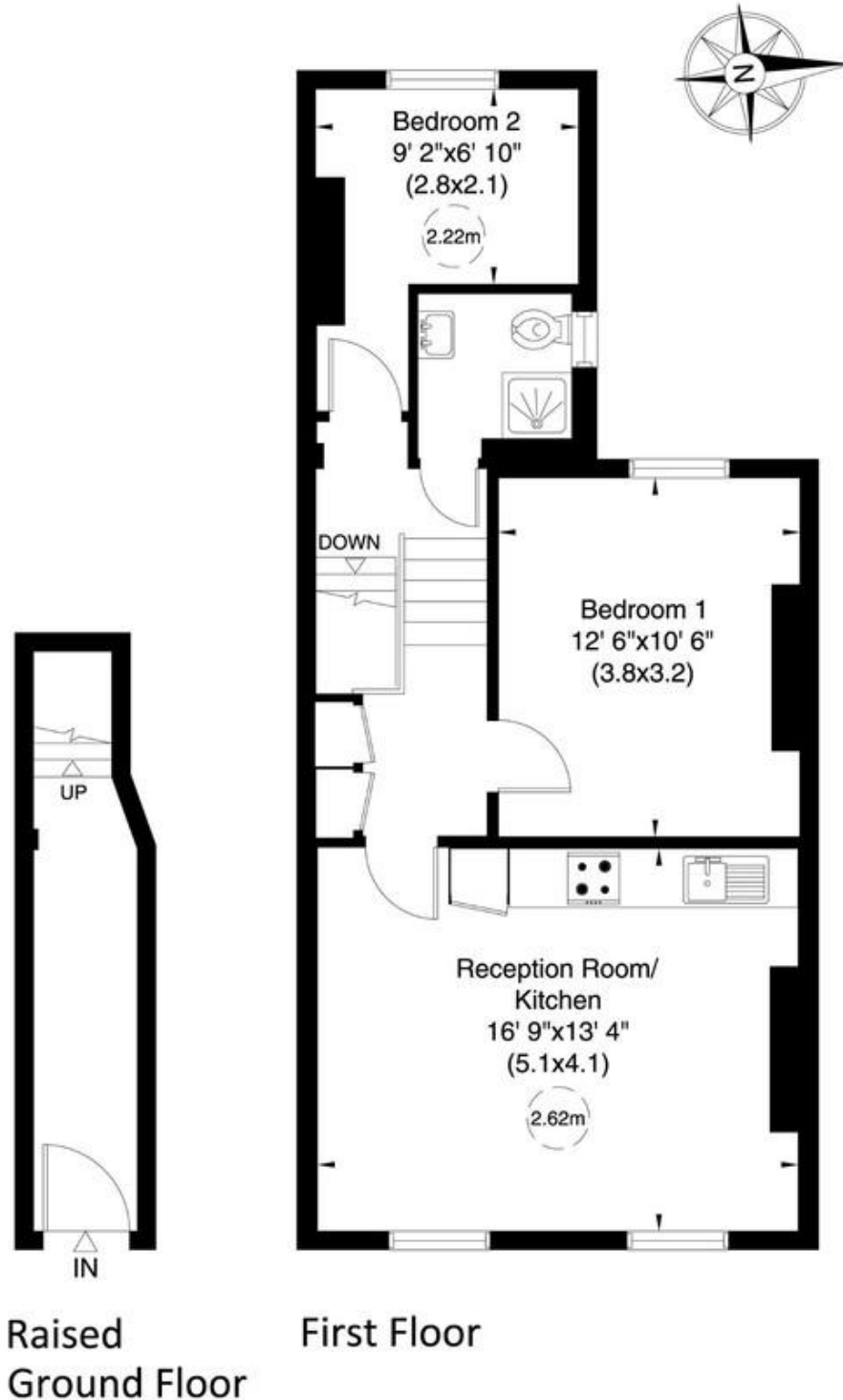
- Two bedrooms
- Westminster
- Quiet Residential Road
- Great transport links
- Abundance of Natural Light
- Excellent condition
- Own Entrance
- Spacious
- Ideally Located
- Double glazed windows throughout

Bravington Road, W9

Approximate Gross Internal Area

59 sq m/ 631 sq ft

Not to Scale, for identification only



For guidance only and must not be relied upon as a statement of fact or used for valuation purposes.
All measurements and areas are approximate only (and have been prepared in accordance with the current edition of the RICS Code of Measuring Practice).



MONEY LAUNDERING REGULATIONS 2003: Intending purchasers will be asked to produce identification documentation at a later stage and we would ask for your co-operation in order that there will be no delay in agreeing the sale.

General: While we endeavour to make our sales particulars fair, accurate and reliable, they are only a general guide to the property and, accordingly, if there is any point which is of particular importance to you, please contact the office and we will be pleased to check the position for you, especially if you are contemplating travelling some distance to view the property.

Measurements: These approximate room sizes are only intended as general guidance. You must verify the dimensions carefully before ordering carpets or any built-in furniture.

Services: Please note we have not tested the services or any of the equipment or appliances in this property, accordingly we strongly advise prospective buyers to commission their own survey or service reports before finalising their offer to purchase.