



## Ashbourne Road, CR4

### £585,000

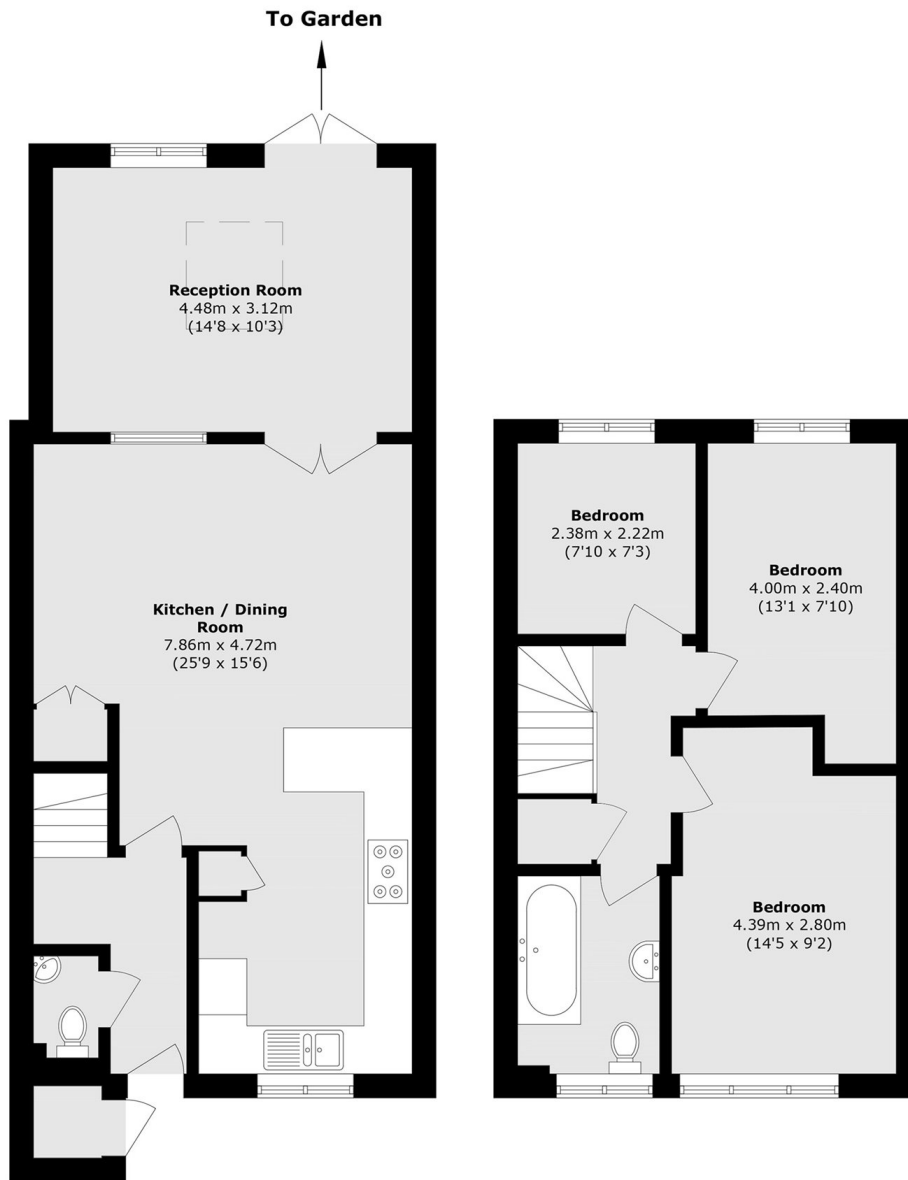
A charming end of terrace home with off-street parking and three generous double bedrooms, a large eat-in kitchen with ample space for dining, a reception room at the rear and private garden.

Ashbourne Road is conveniently located for the many shops, bars and restaurants of central Tooting with the excellent transport links of Thameslink via Tooting Railway and Tooting Broadway Underground stations also within walking distance. The wide green open spaces of Figges Marsh are also nearby.

### Features

- Three Bedrooms
- End of Terrace House
- Off-Street Parking
- Stylish Kitchen
- Private Garden
- Downstairs W/C

# Ashbourne Road, Mitcham, CR4



**Ground Floor**

**First Floor**

Total area (approx.): 90.5 sq. m (974.1 sq. ft)  
External Storage area (approx.): 0.7 sq. m (7.5 sq. ft)