



Painter Street, Thetford, IP24 1AR

Offers In Excess Of £170,000

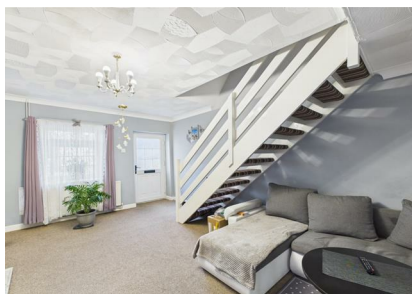
Nestled on the charming Painter Street in Thetford, this delightful end terrace cottage presents an excellent opportunity for first-time buyers and investors alike. The property boasts two well-proportioned bedrooms and a comfortable reception room, providing ample space for relaxation and entertaining.

The well-presented brick and flint exterior adds character to the home, while the fully enclosed rear garden offers a private outdoor space, perfect for enjoying sunny days or hosting gatherings. With gas central heating and UPVC windows throughout, the property ensures warmth and energy efficiency, making it a practical choice for modern living.

Conveniently located within walking distance of both the bus and train stations, this home provides easy access to local amenities and transport links, enhancing its appeal for those commuting or exploring the surrounding areas. Additionally, being a chain-free property simplifies the buying process, allowing for a smoother transition into your new home.

This charming cottage on Painter Street is not just a house; it is a place where memories can be made. Whether you are looking to invest or seeking your first home, this property is a must-see.

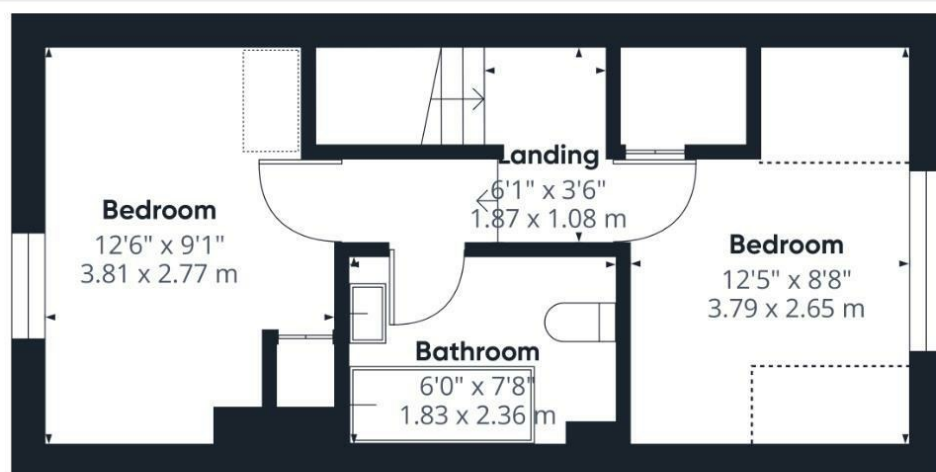
- TOWN CENTRE LOCATION
- IDEAL FIRST HOME OR INVESTMENT PURCHASE
- BRICK & FLINT COTTAGE
- TWO BEDROOMS
- OFFERED ON A CHAIN FREE BASIS
- WITHIN EASY REACH OF ALL LOCAL AMENITIES
- WALKING DISTANCE TO THETFORD BUS INTERCHANGE
- END TERRACED
- ENCLOSED REAR GARDEN
- VIEWINGS HIGHLY ADVISED



Council Tax Band: A - EPC Rating: null



Ground Floor



Floor 1

Approximate total area⁽¹⁾

606 ft²

56.3 m²

Reduced headroom

45 ft²

4.2 m²

(1) Excluding balconies and terraces

Reduced headroom

Below 5 ft/1.5 m

Calculations reference the RICS IPMS 3C standard. Measurements are approximate and not to scale. This floor plan is intended for illustration only.

GIRAFFE360

