



0330 133 1094
OLICO
Cleaning & Maintenance

和品店
MESSIAH ROOM

Apt 140 The Quadrangle, 1 Lower Ormond Street, Manchester, M1 5QD

This 7th floor two bedroom apartment is located close to Oxford rd and the Universities. Entrance hall with storage cupboard, open plan living/kitchen, laminate flooring to the living room, the kitchen has Oak effect wall and base units, oven, hob, extractor hood, microwave, fridge, freezer and dishwasher. Large master bedroom with en-suite shower room and good sized second bedroom. Three piece suite with tiled walls and floors, shower attachment and fitted mirror. Furnished. No Parking. Tax band D. EPC Rating C. EWS-1 B1 Rating. Images taken prior to tenants moving in.

Price £185,000

Viewing arrangements

Viewing strictly by appointment through the agent

245 Deansgate, Manchester, M3 4EN 0161 833 9499 opt 3

Entrance Hall

Laminate flooring with storage cupboard and electric heater

Living/Kitchen

20'7" x 10'1"

Double glazed window and laminate flooring. Electric heater.

The kitchen has wall and base units with oven, hob and extractor hood.

Bedroom One

13'0" x 11'0" max

Double glazed window and electric heater

En-Suite

7'3" x 3'10"

Walk in shower cubicle, wash hand basin and w.c Tiled floor.

Heated towel rail

Bedroom Two

7'2" x 8'8"

Double glazed window and electric heater

Bathroom

7'3" x 6'1"

Three piece suite with shower over the bath, wash hand basin and w.c. Heated towel rail.

Additional Information

Service Charge £1992.64p pa

Building Charges £866.16p pa

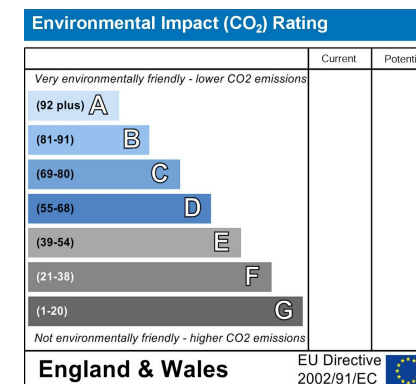
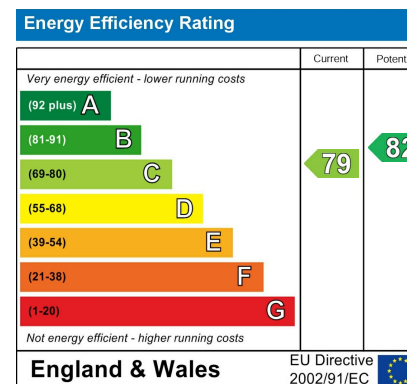
Ground Rent £200 pa

Lease 125 Years from 2007

Building Managed by Rendel & Rittner. Property run by Zenith

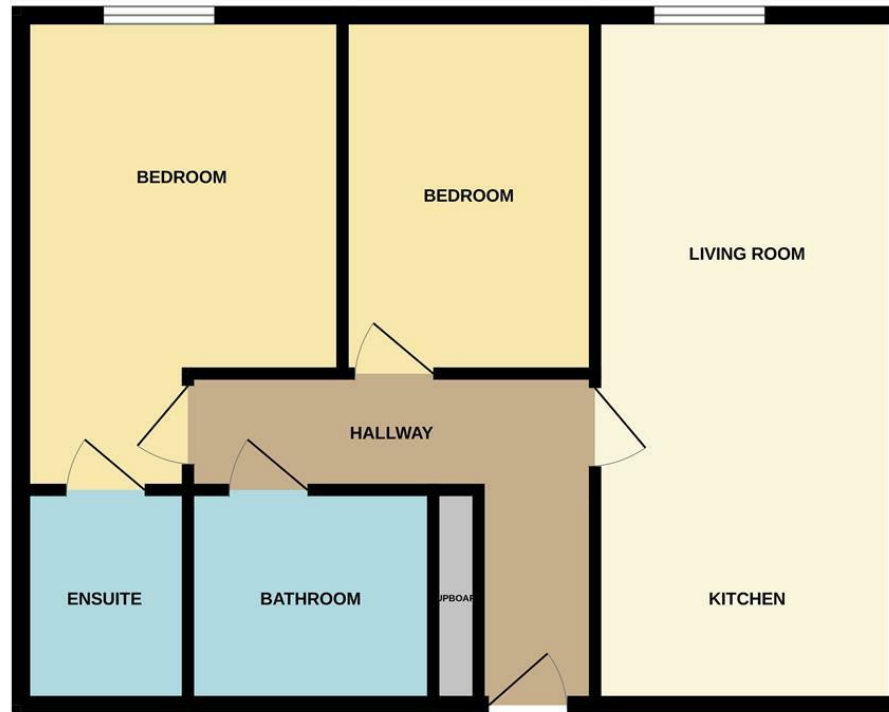
Agents Notes

To be able to purchase a property in the United Kingdom all agents have a legal requirement to conduct Identity checks on all customers involved in the transaction to fulfil their obligations under Anti Money Laundering regulations. We outsource this check to a third party and a charge will apply. Ask the branch for further details.





GROUND FLOOR



Measurements are approximate. Not to scale. Illustrative purposes only
Made with Metropix ©2025



These particulars are believed to be accurate but they are not guaranteed and do not form a contract. Neither Jordan Fishwick nor the vendor or lessor accept any responsibility in respect of these particulars, which are not intended to be statements or representations of fact and any intending purchaser or lessee must satisfy himself by inspection or otherwise as to the correctness of each of the statements contained in these particulars. Any floorplans on this brochure are for illustrative purposes only and are not necessarily to scale.

Offices at: Chorlton, Didsbury, Disley, Hale, Glossop, Macclesfield, Manchester Deansgate, Manchester Whitworth Street, New Mills, Sale, Wilmslow and Withington

245 Deansgate, Manchester, M3 4EN

0161 833 9499 opt 3

manchester@jordanfishwick.co.uk

www.jordanfishwick.co.uk

