



SAMUEL WOOD

5 Lower Raven Lane, Ludlow, SY8 1BL

£1,450 Per Month



5 Lower Raven Lane

Ludlow, SY8 1BL



- Four Bedrooms
- Multiple Reception Rooms
- Conservatory
- Bathroom And Shower Rooms
- Character Features
- Fitted Kitchen
- Enclosed Courtyard Garden

MANAGED BY SAMUEL WOOD Character four bedroom town house in central Ludlow with period features, flexible living space, conservatory and enclosed courtyard garden.

A characterful four bedroom town house situated in the heart of Ludlow, offering spacious accommodation arranged over three floors. The property retains a wealth of period features, including exposed beams, timber detail, exposed brickwork and feature fireplaces, while providing a flexible layout suited to a range of living arrangements.

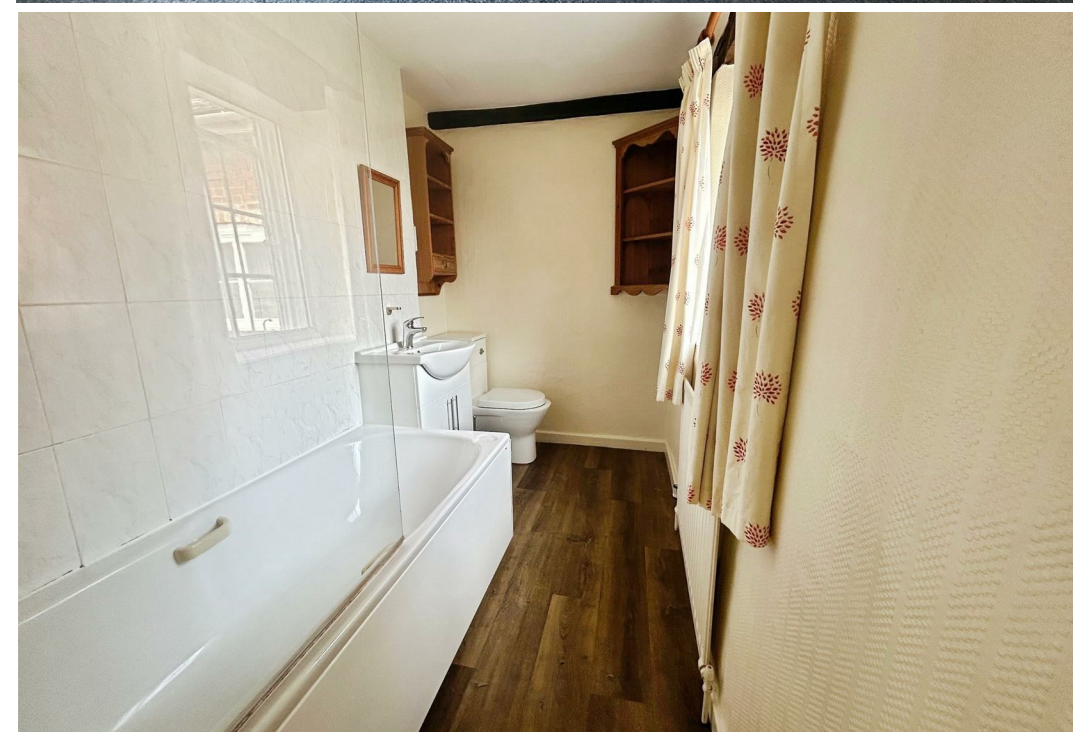
The ground floor accommodation includes an entrance hall, dining room, sitting room, kitchen, cloakroom/WC and a conservatory overlooking the garden. The sitting room features an exposed brick fireplace (please note the stove is not operational), while the dining room provides a separate reception space with further character detail. The fitted kitchen includes a range of wall and base units, work surfaces, sink, hob and space for appliances, with access through to the conservatory. To the first floor there is a principal bedroom with en-suite bathroom, a further bedroom, family room and shower room. The second floor provides two additional bedrooms, both set within the roof space and benefiting from the property's characterful proportions.

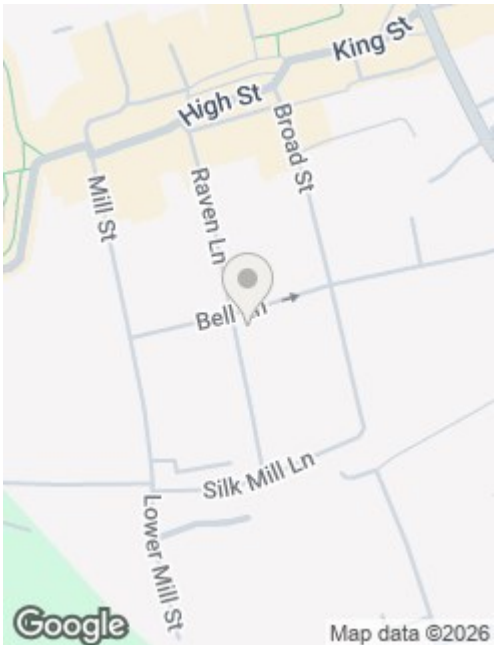
(PLEASE NOTE: the property comes with no appliances apart from a gas hob)

Externally, the property benefits from an enclosed courtyard garden to the rear, with paved seating areas, established planting and attractive stone and brick boundary walls. The conservatory opens directly onto the garden, creating a useful connection between the internal living space and outside area.

Lower Raven Lane is a historic street within central Ludlow, placing the property within easy reach of the town's shops, cafés, restaurants, schools and local amenities. Ludlow is well known for its period architecture, castle, market square and excellent independent businesses, with the railway station and surrounding Shropshire countryside also accessible from the town centre.







Directions

Furnished.
No smoking/vaping.
No Pets.
EPC - E
Council Tax Band – E
Utilities (mains gas, mains electric, mains water, mains drainage)

Parking situation – on street parking (please note Ludlow operates residents permit scheme. You can find more details on Shropshire Council website)

IMPORTANT INFORMATION FOR APPLICANTS WHO ARE CURRENTLY RENTING:

If you are renting another property, please check your notice requirements before booking a viewing or submitting an application. From 1 May 2026, tenants ending an assured periodic tenancy in England usually need to give 2 months' written notice, and the tenancy must normally end on the day rent is due or the day before. This means your actual move date may be later than you expect. Please do not assume that your current landlord will agree to a shorter notice period or an earlier release unless this has been confirmed. We may ask you to confirm your current tenancy notice position before progressing an application.





Floor Plans



Total floor area: 172 sq.m. (1,852 sq.ft.)

This floor plan is for illustrative purposes only. It is not drawn to scale. Any measurements, floor areas (including any total floor area), openings and orientations are approximate. No details are guaranteed, they cannot be relied upon for any purpose and do not form any part of any agreement. No liability is taken for any error, omission or misstatement. A party must rely upon its own inspection(s). Powered by www.Propertybox.io

We take every care in preparing our sales details. They are checked and usually verified by the Vendor. We do not guarantee appliances, alarms, electrical fittings, plumbing, showers etc. You must satisfy yourself that they operate correctly. Room sizes are approximate; they are usually taken in metric and converted to imperial. Do not use them to buy carpets or furniture. We cannot verify the tenure, as we do not have access to the legal title; we cannot guarantee boundaries or rights of way so you must take the advice of your legal representative. No person in the employment of or representing Samuel Wood has any authority to make any representation or warranty whatever in relation to this property. If there is any point which is of particular importance to you, please contact the office and we will be pleased to check the information. Do so particularly if contemplating travelling some distance to view. Applicants are advised that the majority of our shots are taken with a wide angle lens.

CONTEMPORARY AGENCY • TRADITIONAL VALUES

2 Shoplatch, Shrewsbury, Shropshire, SY1 1HF

Tel: 01743 272710 | shrewsbury@samuelwood.co.uk