



2 Bed  
Flat

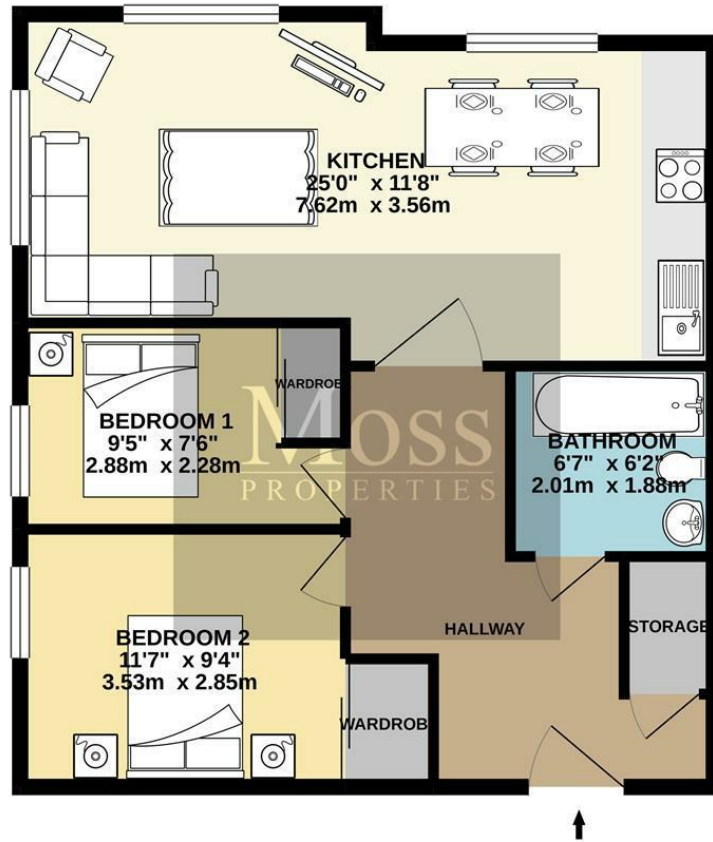
located in  
Weald House,  
Birch Close,  
Huntington

£1,150 PCM



**Moss**  
PROPERTIES

3RD FLOOR APARTMENT  
683 sq.ft. (63.4 sq.m.) approx.



TOTAL FLOOR AREA : 683 sq.ft. (63.4 sq.m.) approx.

Whilst every attempt has been made to ensure the accuracy of the floorplan contained here, measurements of doors, windows, rooms and any other items are approximate and no responsibility is taken for any error, omission or mis-statement. This plan is for illustrative purposes only and should be used as such by any prospective purchaser. The services, systems and appliances shown here not been tested and no guarantee as to their operability or efficiency can be given.  
Made with Metropix ©2020

| Energy Efficiency Rating                    |                            |           |
|---|----------------------------|-----------|
|   | Current                    | Potential |
| Very energy efficient - lower running costs |                            |           |
| (92 plus) <b>A</b>                          |                            |           |
| (81-91) <b>B</b>                            | 82                         | 82        |
| (69-80) <b>C</b>                            |                            |           |
| (55-68) <b>D</b>                            |                            |           |
| (39-54) <b>E</b>                            |                            |           |
| (21-38) <b>F</b>                            |                            |           |
| (1-20) <b>G</b>                             |                            |           |
| Not energy efficient - higher running costs |                            |           |
| <b>England &amp; Wales</b>                  | EU Directive<br>2002/91/EC |           |

DIRECTIONS

CONTACT

White Rose Way  
Doncaster  
South Yorkshire

E: info@mossspm.co.uk  
T: 01302 730077  
www.mossspm.co.uk

**Moss**  
PROPERTIES