



## Denmark Villas, Hove



Guide Price  
£250,000  
Leasehold

- NO ONWARD CHAIN
- MODERN FEATURES THROUGHOUT
- HIGHLY SOUGHT AFTER CENTRAL HOVE LOCATION
- TOP FLOOR APARTMENT
- IDEAL FIRST TIME BUY OR INVESTMENT
- ACCESS TO COMMUNAL GARDEN

\*\*\*GUIDE PRICE £250,000 - £275,000\*\*\*

This beautifully presented central Hove apartment has easy access to everything that this highly popular and desirable city has to offer. Located on Denmark Villas this apartment benefits from being just a short walk from Hove seafront with delightful seafront walks, city cycle lanes and beach huts. The property is also ideally located within a few minute walk from Hove mainline station with its direct links to London, and Church Road with its variety of bars, restaurants, cafes and local independent shops. Also within close proximity you will find Hove Park and Hove Recreation Ground.

This spacious and very well presented apartment occupies the top floor of this beautiful character property. The generous accommodation features: Entrance hall, separate kitchen, living room, modern fitted bathroom with a walk in shower and separate bathtub. Other benefits include; Eaves storage, Velux windows throughout the flat and also communal gardens to the building.

Robert  
Luff & Co  
Sales | Lettings | Commercial

T: 01273 921133 E:  
[www.robertluff.co.uk](http://www.robertluff.co.uk)



## Accommodation

Private Hallway Entrance

Lounge 10'3" x 10'11" (3.14 x 3.33)

Kitchen 8'10" x 7'11" (2.70 x 2.43)

Bedroom 18'6" x 6'3" (5.65 x 1.91)

Bathroom

Loft 15'7" x 9'2" (4.77 x 2.80)

### Agent Notes

Leasehold: 89 Years Remaining On The Lease

Service Charge: £1,120 Per Annum

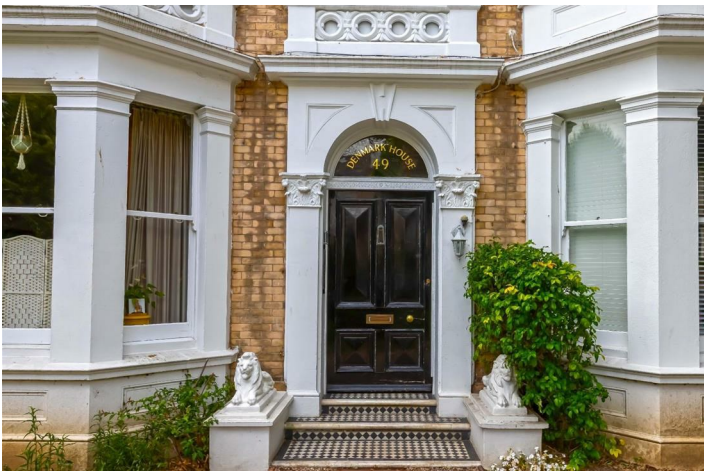
Ground Rent: £100 Per Annum

Council Tax: Band B

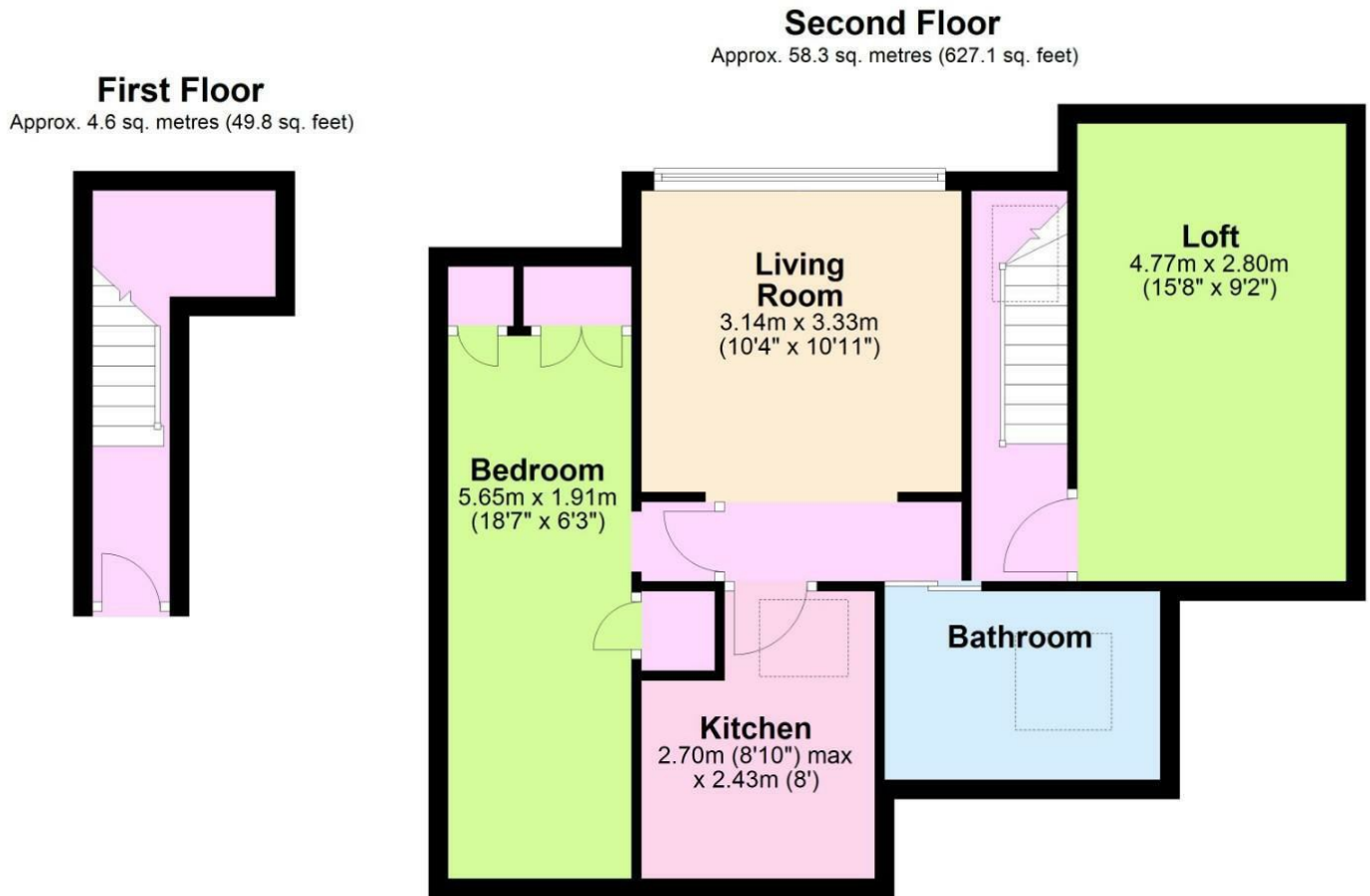
EPC: Band E



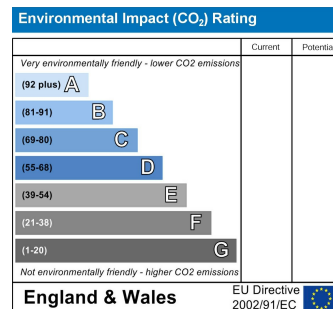
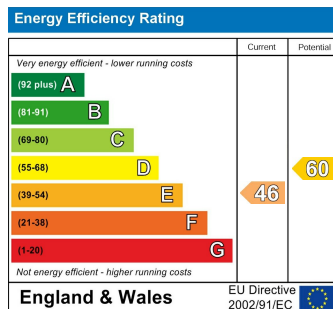
28 Blatchington Road, Hove, East Sussex, BN3 3YD  
T: 01273 921133 E:  
[www.robertluff.co.uk](http://www.robertluff.co.uk)



28 Blatchington Road, Hove, East Sussex, BN3 3YN  
T: 01273 921133 E:  
[www.robertluff.co.uk](http://www.robertluff.co.uk)



Total area: approx. 62.9 sq. metres (676.9 sq. feet)



The information provided about this property does not constitute or form any part of an offer or contract, nor may it be regarded as representations. All interested parties must verify accuracy and your solicitor must verify tenure/lease information, fixtures and fittings and, where the property has been extended/converted, planning/building regulation consents. All dimensions are approximate and quoted for guidance only as are floor plans which are not to scale and their accuracy cannot be confirmed. References to appliances and/or services does not imply that they are necessarily in working order or fit for the purpose.