



## Cadogan Terrace, E9

£600,000

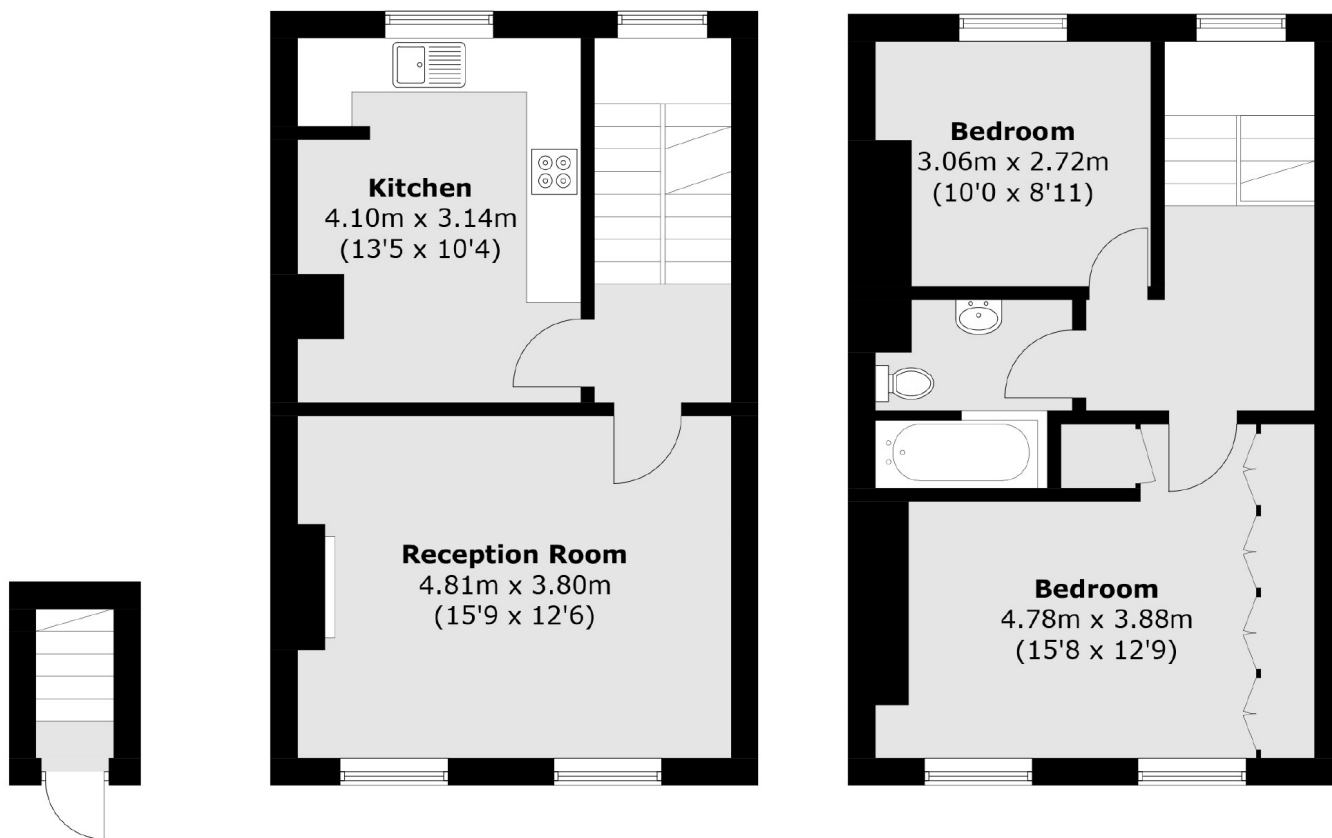
A two double bedroom Victorian, Share of Freehold maisonette overlooking Victoria Park. This property measures in excess of 847 square feet and maintains much of its period charm throughout. There are high ceilings, sash windows, separate eat-in kitchen and one centralised Bathroom. Chain Free

Situated opposite Victoria Park and close to the local amenities that Victoria Park Village has to offer. Queen Elizabeth Olympic Park is also a short walk away with it's legacy facilities as well as Hackney Wick station being less than a mile away.

### Features

Two Double Bedrooms  
Over 847 sqft  
Victorian  
Maisonette  
Opposite Victoria Park  
Chain Free

# Cadogan Terrace, London, E9



**Ground Floor**

**First Floor**

**Second Floor**

Total area (approx.): 78.7 sq. m (847.0 sq. ft)