



Binns Road, London, W4 2BS

Guide Price £1,095,000

**WHITMAN & CO.**

SALES · LETTINGS · COMMERCIAL

- Attractive mid-terrace Victorian house
- Bright south facing reception room
- Potential to extend and remodel STPP
- Sought after 'Glebe Estate' location
- 28'10 Private garden
- No onward chain

Tenure - Freehold  
 Local Authority - Hounslow  
 Council Tax - Band F

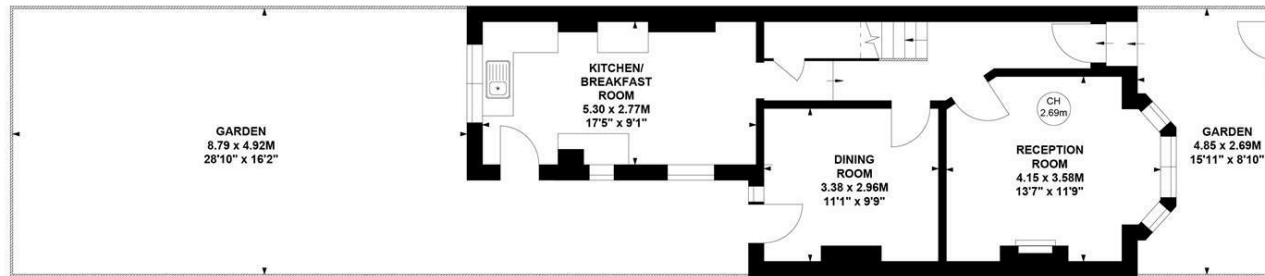
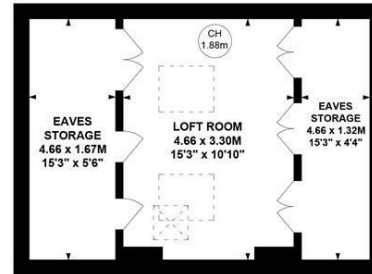
## THE PROPERTY

An attractive mid-terrace Victorian property, ideally located in the sought-after Glebe Estate, offering close proximity to Chiswick High Road's extensive facilities. The house requires updating and offers the potential to extend and remodel, subject to the necessary consents. The accommodation comprises a bright south-facing reception room with bay window, a kitchen/breakfast room, a dining room, a private 28'10 garden, two double bedrooms, a large bathroom, loft room accessed via space-saving stairs from the second bedroom. The loft can be properly converted to create additional bedrooms/bathroom. Binns Road is a superb location being close to Chiswick High Road and Devonshire Road's shops, cafes and restaurants and within a short walk of the River Thames and Chiswick House and Grounds. Transport links include Turnham Green station, local bus routes and the A4/M4 for routes in and out of London. No onward chain.

## Binns Road, W4

Approximate gross internal area  
**121.53 sq m / 1308 sq ft**  
 (Including Eaves Storage)  
**Eaves Storage 13.93 sq m / 150 sq ft**

Key :  
 CH - Ceiling Height



Not to scale, for guidance only and must not be relied upon as a statement of fact.  
 All measurements and areas are approximate only

## SITUATION



5-7 Turnham Green Terrace, Chiswick, London, W4 1RG

Tel 020 8747 8800

E-mail [sales@whitmanandco.com](mailto:sales@whitmanandco.com)

Website [www.whitmanandco.com](http://www.whitmanandco.com)



MISREPRESENTATION ACT 1967

Whitman & Co. for themselves and for the vendors give notice that these particulars do not constitute any part of, an offer of contract. All statements contained in these particulars are made without responsibility on the part of Whitman & Co. or the vendor. None of the statements contained in these particulars is to be relied upon as statements or representations of facts. Any intending purchaser must satisfy himself by inspection or otherwise as to the correctness of each of the statements contained in these particulars. The vendor does not make or give, and neither Whitman & Co. or any person in their employment has any authority to make or give, any representation or warranty whatever in relation to the property.