

EUGEN COTORANU

Personal Estate Agent
exp

Pavilion Chambers, Lavender Hill, Clapham

Guide Price £475,000

3 1 1



Live big across two levels in this sleek 3-bed flat in the heart of Clapham, with private parking. Chain free. Smart layout. Ready to move!

SELL | BUY | LET | INVEST
07774807085 | eugen.cotoranu@exp.uk.com

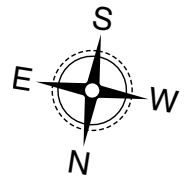
EUGEN COTORANU

Personal Estate Agent
exp

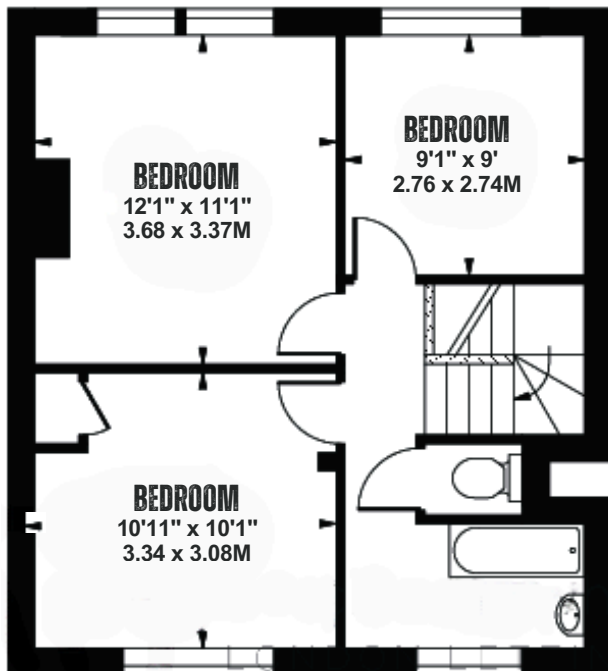
- Please Quote EC0801
- Modern Finishes
- Top-Rated Schools Nearby
- Generous Lounge
- Chain-Free
- Guide Price: £475,000-£490,000
- Fantastic Transport Links
- Naturally Bright | South Facing
- Split-Level Design
- Private Parking

PAVILION CHAMBERS

APPROXIMATE GROSS INTERNAL FLOOR AREA: 814 SQ FT - 75.58 SQ M



THIRD FLOOR



SECOND FLOOR



FOR IDENTIFICATION PURPOSES ONLY, NOT TO SCALE

SELL | BUY | LET | INVEST
07774807085 | eugen.cotoranu@exp.uk.com