



15 Camden Road, Maidenhead SL6 6HA

welcome to

15 Camden Road, Maidenhead

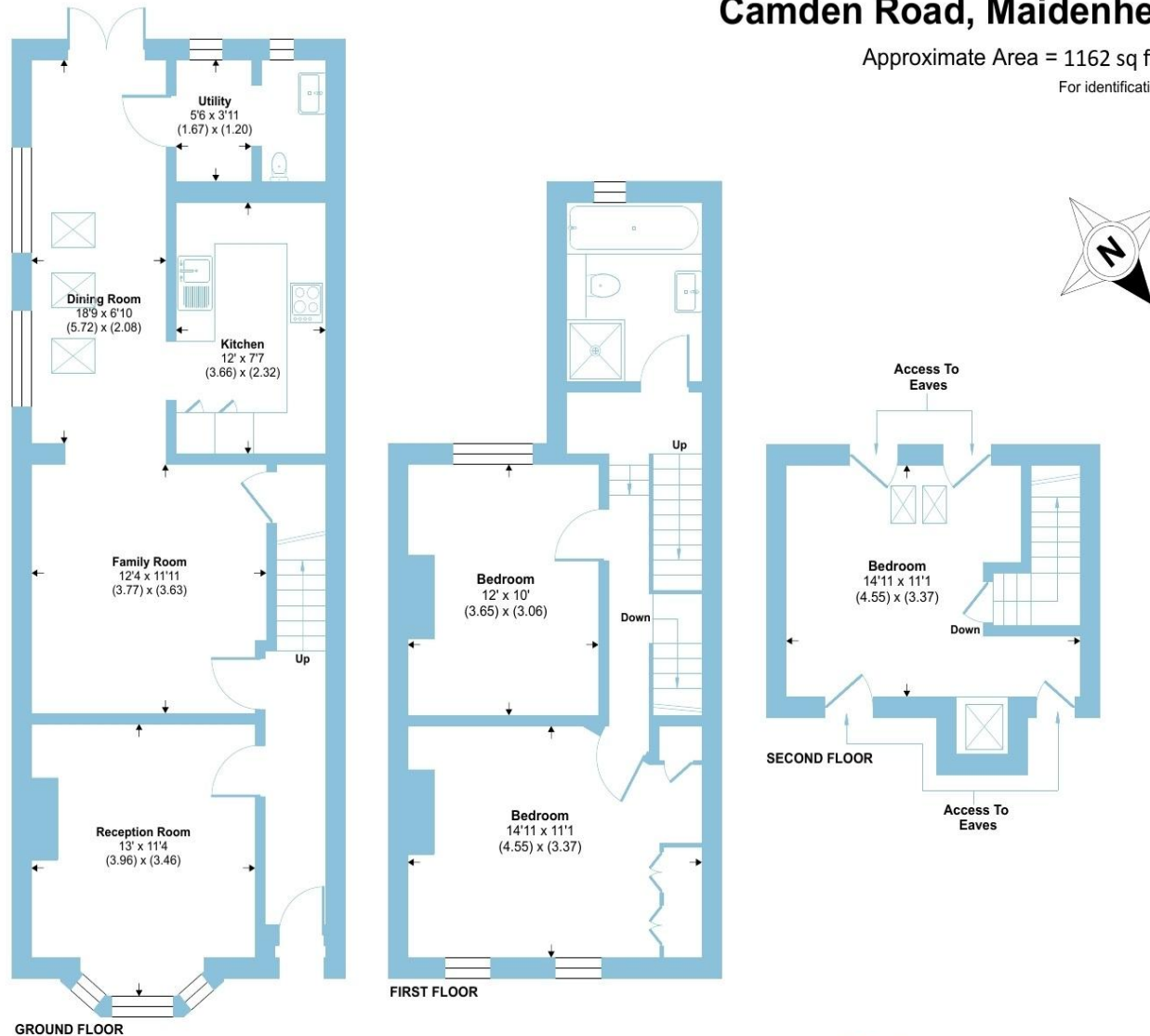
A beautifully finished three-bedroom semi-detached Victorian home located on the highly desirable Camden Road within Furze Platt catchment and close to outstanding/good schools, offering timeless period character blended seamlessly with stylish modern upgrades. This impressive property has been thoughtfully improved throughout.



Camden Road, Maidenhead, SL6

Approximate Area = 1162 sq ft / 108 sq m

For identification only - Not to scale



Floor plan produced in accordance with RICS Property Measurement 2nd Edition, incorporating International Property Measurement Standards (IPMS2 Residential). © nchecom 2025. Produced for Barnard Marcus. REF: 1386822



The welcoming entrance hall sets the tone, showcasing the home's generous proportions and original charm. Two elegant reception rooms provide versatile living space, each enhanced by high ceilings, sash-style windows and attractive fireplaces. These rooms offer the perfect balance of cosy relaxation and entertaining potential, maintaining the warmth and personality of the Victorian era.

To the rear, the stunning new kitchen serves as the heart of the home. Designed with both style and practicality in mind, it features quality cabinetry, integrated appliances, ample work surfaces and space for casual dining. With direct access to the garden, it is ideal for both everyday family life and summer entertaining.

Upstairs, the property offers three well-proportioned bedrooms arranged over two floors. The first floor hosts two spacious doubles alongside a modern family bathroom. The top floor provides a generous third bedroom with excellent natural light, making it a superb option for a main bedroom, guest suite or dedicated home office.

Outside, the enclosed rear garden offers a private and peaceful outdoor retreat, perfect for relaxing, dining or gardening. The frontage reflects the home's classic Victorian appeal, contributing to the charm of this attractive road.

Ideally positioned within easy reach of Maidenhead town centre, the Elizabeth Line station, local parks and reputable schools.

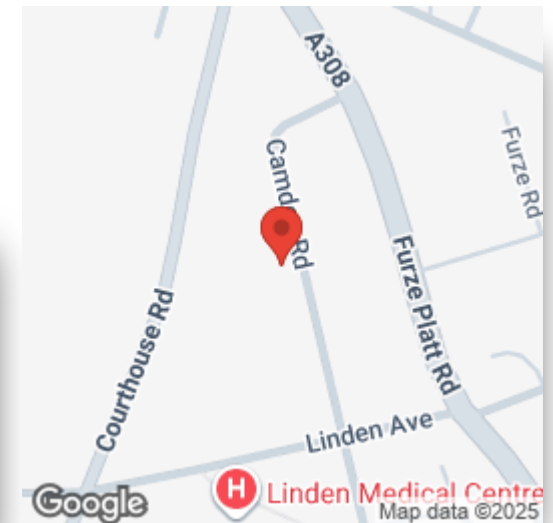
welcome to

15 Camden Road, Maidenhead

- FURZE PLATT CATCHMENT
- CLOSE TO OUTSTANDING/GOOD SCHOOLS
- BEAUTIFULLY FINISHED VICTORIAN HOME
- THOUGHTFULLY IMPROVED THROUGHOUT
- VERSATILE LIVING SPACE
- RECENTLY FITTED CONTEMPORARY KITCHEN
- THREE WELL-PROPORTIONED BEDROOMS
- PRIVATE ENCLOSED REAR GARDEN

Tenure: Freehold EPC Rating: D
Council Tax Band: E

£650,000



Please note the marker reflects the
postcode not the actual property

check out more properties at rogerplatt.co.uk



Property Ref:
MHD123033 - 0002

1. MONEY LAUNDERING REGULATIONS Intending purchasers will be asked to produce identification documentation at a later stage and we would ask for your co-operation in order that there is no delay in agreeing the sale. 2. These particulars do not constitute part or all of an offer or contract. 3. The measurements indicated are supplied for guidance only and as such must be considered incorrect. Potential buyers are advised to recheck measurements before committing to any expense. 4. We have not tested any apparatus, equipment, fixtures or services and it is in the buyers interest to check the working condition of any appliances. 5. Where an EPC, or a Home Report (Scotland only) is held for this property, it is available for inspection at the branch by appointment. If you require a printed version of a Home Report, you will need to pay a reasonable production charge reflecting printing and other costs. 6. We are not able to offer an opinion either written or verbal on the content of these reports and this must be obtained from your legal representative. 7. Whilst we take care in preparing these reports, a buyer should ensure that his/her legal representative confirms as soon as possible all matters relating to title including the extent and boundaries of the property and other important matters before exchange of contracts.

Roger Platt is a trading name of Sequence (UK) Limited which is registered in England and Wales under company number 4268443, Registered Office is Cumbria House, 16-20 Hockliffe Street, Leighton Buzzard, Bedfordshire, LU7 1GN. VAT Registration Number is 500 2481 05.


roger platt



01628 773333



Maidenhead@rogerplatt.co.uk



25-29 Queen Street, MAIDENHEAD, Berkshire,
SL6 1NB



rogerplatt.co.uk