



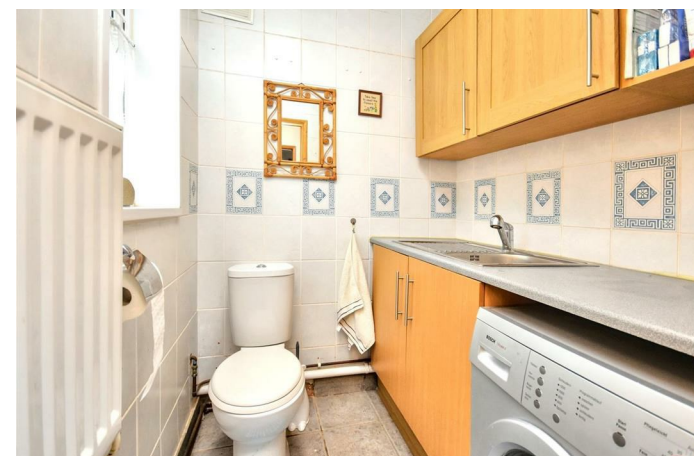
5 Springfield Grove
Corby, NN17 1EN



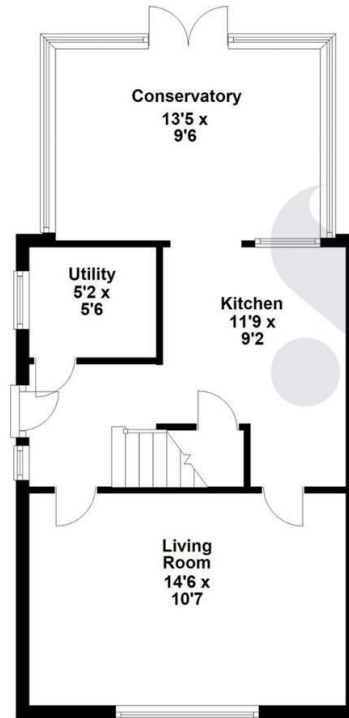
Simpson West

Located within the highly sought after Lloyds area is this THREE bedroom family home occupying a pleasant position within a quiet cul-de-sac. This home occupies a desirable position with a south facing garden and is within walking distance to the local schools, shops and other amenities. Features include an entrance hall, living room, kitchen breakfast with conservatory to the rear and a cloakroom w/c utility. To the first floor there are two single bedrooms, a large double bedroom and the main family shower room. Outside is a south facing garden that is enclosed with a large patio area and lawned space. To the front is an established garden with a large driveway leading to a car port offering off road parking for several vehicles. Early viewings are highly encouraged. Energy rating D. Council Tax Band A.

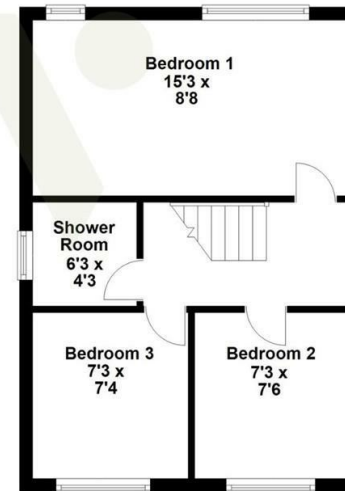
£219,950



Ground Floor



First Floor



Floor plan not to scale - for guidance purposes only.
Floor plan created by Simpson West for their use.
Plan produced using PlanUp.



Energy Efficiency Rating

	Current	Potential
Very energy efficient - lower running costs		
(92 plus) A		90
(81-91) B		
(69-80) C		
(55-68) D	63	
(39-54) E		
(21-38) F		
(1-20) G		
Not energy efficient - higher running costs		
England & Wales	EU Directive 2002/91/EC	



When you buy with Simpson West, you know **you'll be in safe hands**. From the moment you walk through our doors, we'll make you **feel truly welcome**. Our sales consultants and financial advisors will take you through **every step of the process**, offering **free expert advice** along the way, from help choosing the right mortgage and insurance through to finding your conveyancer. And if you need help selling your home too, **with over 20 years of local experience, you can trust us to get you moving**.



**Simpson
West**

Making Every
Journey Personal



01536 202007

info@simpsonwest.co.uk

<https://www.simpsonwest.co.uk/>

64 Corporation Street, Corby, Northants, NN17 1NH