



www.chrystals.co.im

27 Creggan Lea, Port St Mary, IM9 5BE
Asking price £365,000

27 Creggan Lea, Port St Mary, IM9 5BE

Asking Price £365,000

Set on an extra large double plot, this semi-detached house enjoys fabulous countryside views and conveniently situated for shops and beach just a short walk away. Accommodation comprises lounge, dining kitchen, cloakroom, 3 bedrooms and bathroom. Outside is a fabulous lawned garden and parking. No onward chain.



LOCATION

Travelling into Port St Mary from the Four Roads roundabout turn left into Beach Road and proceed ahead. Take the first right turn into Creggan Lea and number 27 is the first house on the left hand side.

HALLWAY

Good sized entrance hallway with staircase leading to first floor.

LOUNGE

14' 0" x 12' 4" (4.26m x 3.76m)

Good sized lounge. Front aspect. Doors to:

DINING KITCHEN

15' 1" x 10' 4" (4.59m x 3.15m)

CLOAKROOM

W.C., wash hand basin.

FIRST FLOOR

LANDING

Window with lovely outlook across open fields. Airing cupboard. Loft access.

BEDROOM 2

10' 9" x 10' 6" (3.27m x 3.20m)

Superb views over neighbouring fields. Rear aspect.

BEDROOM 3

10' 0" x 7' 6" (3.05m x 2.28m)

Rear aspect enjoying fabulous countryside views.

BEDROOM 1

14' 0" x 11' 3" (4.26m x 3.43m)

Front aspect.

SHOWER ROOM

Large walk-in shower, w.c., wash hand basin. Airing cupboard.

OUTSIDE

Extra large double plot mainly laid to lawn with patio area. Quality wooden shed. Parking space to rear.

SERVICES

Mains water, drainage and electricity. uPVC double glazing. Gas central heating.

POSSESSION

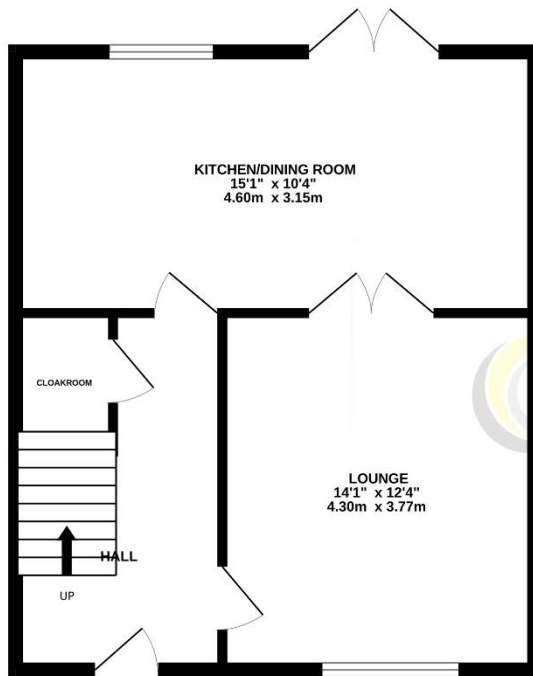
Freehold. Vacant possession on completion (September 2026 onwards). The company do not hold themselves responsible for any expenses which may be incurred in visiting the same should it prove unsuitable or have been let, sold or withdrawn. **DISCLAIMER** - Notice is hereby given that these particulars, although believed to be correct do not form part of an offer or a contract. Neither the Vendor nor Chrystals, nor any person in their employment,

makes or has the authority to make any representation or warranty in relation to the property. The Agents whilst endeavouring to ensure complete accuracy, cannot accept liability for any error or errors in the particulars stated, and a prospective purchaser should rely upon his or her own enquiries and inspection. All Statements contained in these particulars as to this property are made without responsibility on the part of Chrystals or the vendors or lessors.

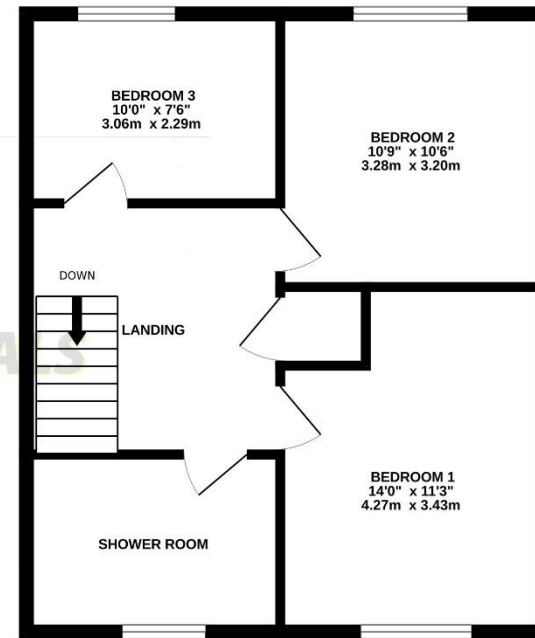




GROUND FLOOR



1ST FLOOR



Measurements are approximate. Not to scale. Illustrative purposes only
Made with Metropix ©2026

Since 1854



DOUGLAS

31 Victoria Street
Douglas IM1 2SE
T. 01624 623778
E. douglas@chrystals.co.im

PORT ERIN

23 Station Road
Port Erin IM9 6RA
T. 01624 833903
E. porterin@chrystals.co.im

COMMERCIAL

Douglas Office: 01624 625100, commercial@chrystals.co.im

RENTALS

Douglas Office: 01624 625300, douglasrentals@chrystals.co.im

Directors: Neil Taggart BSc (Hons), M.R.I.C.S.; Joney Kerruish BSc (Hons), M.R.I.C.S.; Dafydd Lewis BSc (Hons), M.R.I.C.S, MA (Cantab), Dip Surv Prac.
Registered in the Isle of Man No. 34808, Chrystal Bros, Stott & Kerruish Ltd. Trading as Chrystals. Registered Office, 31 Victoria Street, Douglas, Isle of Man IM1 2SE.