



Elgin Crescent, W11

£1,995,000

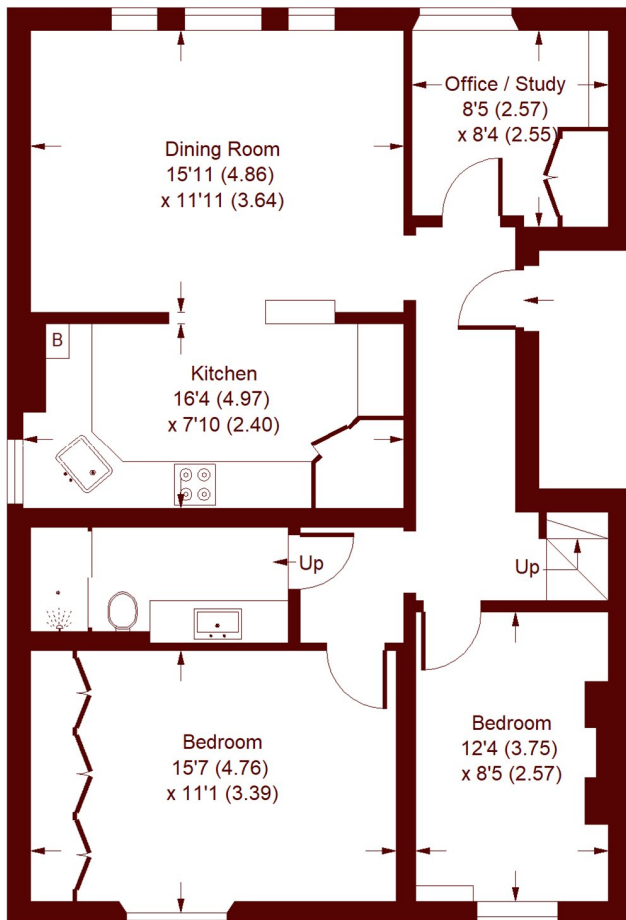


- Grand period building
- Excellent reception space
- Separate kitchen
- Four bedrooms
- Southerly aspect
- Prime Notting Hill

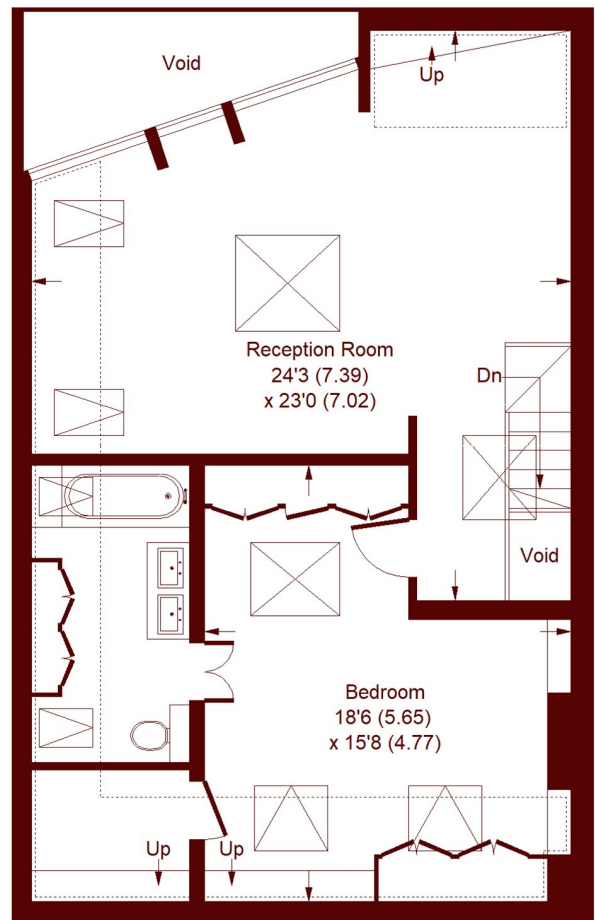
Elgin Crescent, W11

APPROX. GROSS INTERNAL FLOOR AREA = 1653 SQFT / 153.6 SQM
(EXCLUDING VOID)

 = REDUCED HEADROOM BELOW 1.5 M / 5'0"



SECOND FLOOR



THIRD FLOOR

Whilst every attempt has been made to ensure the accuracy of the floor plan, measurements are approximate and not to scale.
No guarantee is given on the total square footage of the property quoted on the plan. Figures given are for guidance.
Plan is for illustration purposes only, not to be used for valuations.

Marsh & Parsons Notting Hill

2-6 Kensington Park Road,
London, W11 3BU
020 7313 2890