



 Stuart
Rushton

 Stuart
Rushton
& COMPANY

43 Castle Hill, Prestbury

Offers Over **£3,000,000**



43 Castle Hill, Prestbury

A striking 7,000 sq ft contemporary home set within beautifully landscaped gardens on the edge of Prestbury Village, enjoying far-reaching views towards the Pennines. Arranged over three floors, the property offers spacious, well-designed family living throughout.

The ground floor features an impressive reception hall, elegant drawing room, formal dining room, and a stunning open-plan kitchen, dining and living space with bespoke cabinetry, opening onto terraces and gardens. Additional spaces include a snug, utility and boot room.

The lower ground floor offers superb leisure and entertainment facilities, including a cinema room, gym, wine room, and an exceptional indoor swimming pool complex with jacuzzi, sauna, bar and terrace access.

Upstairs, five generous bedrooms include a luxurious principal suite with dressing room and en suite, two further en suite bedrooms, and a stylish family bathroom.

Externally, the property boasts extensive gardens, multiple terraces, a gated resin driveway and a detached garage block, currently configured as a high-spec golf simulator (available by separate negotiation).





43 Castle Hill, Prestbury

- Approx. 7,000 sq ft contemporary home over three floors
- Edge of Prestbury Village with far-reaching Pennine views
- Five bedrooms including luxurious principal suite
- Stunning open-plan kitchen/living space with bespoke cabinetry
- Multiple reception rooms including cinema and gym
- Exceptional leisure complex with pool, jacuzzi, sauna and bar
- Landscaped gardens with terraces and gated driveway
- Detached garage/golf simulator (available by separate negotiation)





Stuar
Rush
& Co.



Stuar
Rush
& Co.

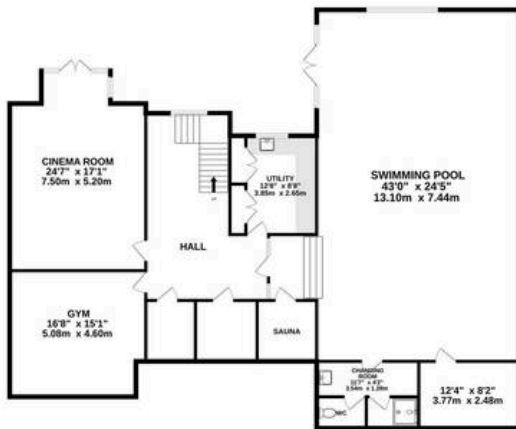


Stuar
Rush
& Co.

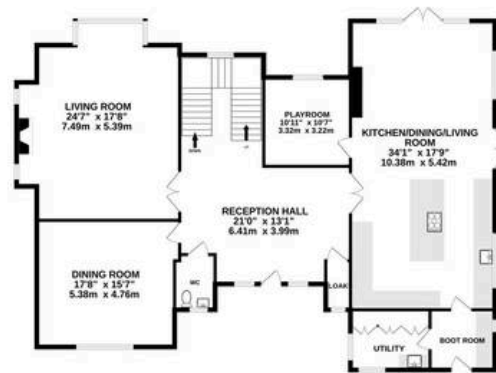


Stuar
Rush
& Co.

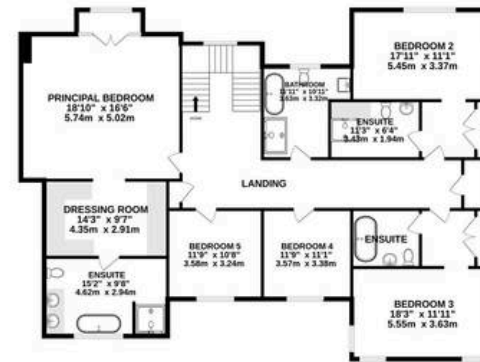
LOWER GROUND FLOOR
2017 sq. ft. (200.2 sq.m.) approx.



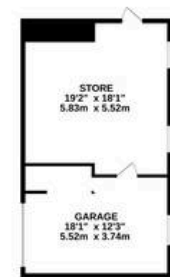
GROUND FLOOR
2014 sq. ft. (200.0 sq.m.) approx.



1ST FLOOR
2077 sq. ft. (201.8 sq.m.) approx.



2ND FLOOR
548 sq. ft. (50.9 sq.m.) approx.



TOTAL FLOOR AREA : 7181 sq.ft. (667.1 sq.m.) approx.

Whilst every attempt has been made to ensure the accuracy of the floorplan contained here, measurements of doors, windows, rooms and any other items are approximate and no responsibility is taken for any error, omission or mis-statement. This plan is for illustrative purposes only and should be used as such by any prospective purchaser. The services, systems and appliances shown have not been tested and no guarantee as to their operability or efficiency can be given.

Made with Metropix ©2026



Stuart Rushton & Company

Stuart Rushton & Co, 35 King Street – WA16 6DW

01565 757000

enquiries@srushton.co.uk

www.srushton.co.uk



**Stuart
Rushton**
& COMPANY

We are not authorised to make or give any representations or warranties in relation to the property either here or elsewhere. We assume no responsibility for any statement that may be made in these particulars, and they do not form part of any offer or contract and must not be relied upon as statements or representation of fact. Any areas, measurements or distances are approximate. The text, photographs and plans are for guidance only. Importantly, it should not be assumed that the property has all necessary planning, building regulations or other consents and we have not tested any services, equipment or facilities. Purchasers must satisfy themselves by inspection or otherwise.