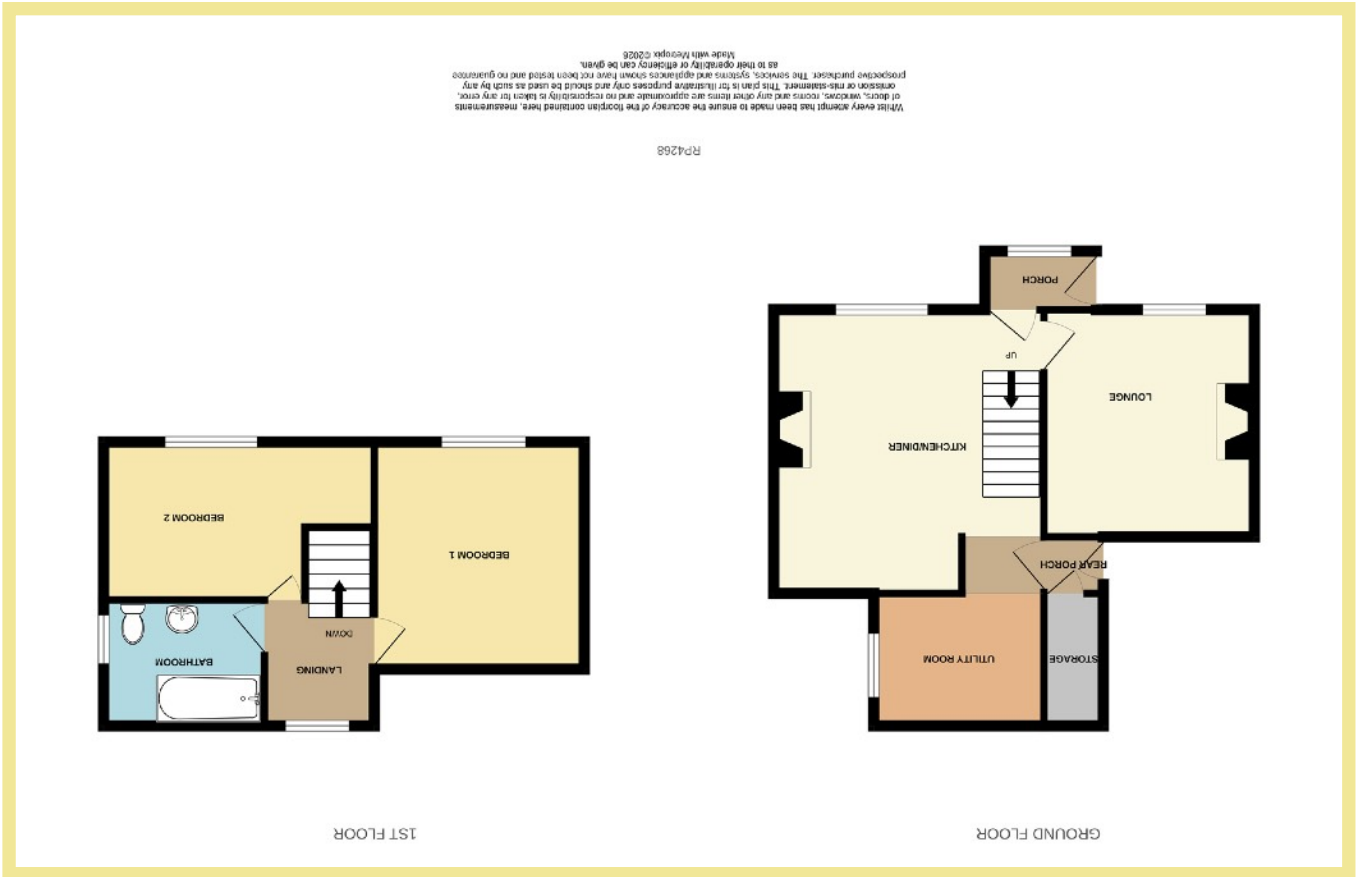
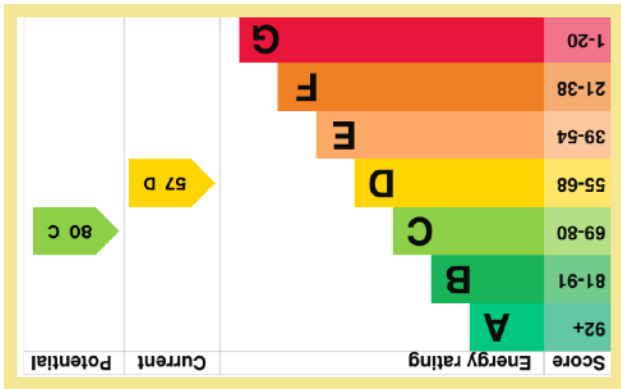


We endeavor to make our sales details accurate and reliable but they should not be relied on as statements or representations of fact and they do not constitute any part of an offer or contract. The seller does not make any representation or give any warranty in relation to the property and we have no authority to do so on behalf of the seller. Services, fittings and equipment referred to in the sales details have not been tested (unless otherwise stated) and no warranty can be given as to their condition. We strongly recommend that all the information which we provide about the property is verified by yourself or your advisers. Please contact us before viewing the property. If there is any point of particular importance to you we will be pleased to provide additional information or to make further enquiries. We will also confirm that the property remains available. This is particularly important if you are contemplating traveling some distance to view the property.

www.fletcherpoole.com



Fairview  
Pendre Road  
Penrhynside  
Conwy  
LL30 3BH



## TWO BEDROOM DETACHED HOUSE SITUATED IN A QUIET, POPULAR VILLAGE WITH FAR REACHING SEA VIEWS

### Description

"Fairview" is a detached two bedroom house situated in the quiet, yet popular village of Penrhynside with its 2 local pubs, lovely country walks and close to the local shops, schools, promenade & beach in Penrhyn Bay.

A short drive from both Llandudno & Colwyn Bay.

In an elevated position with far reaching views of sea & coastline.

To the front there is a small lawned garden area with mature trees & plants, seating area taking in the stunning views with access via timber gate to the courtyard at the rear.

The house comprises of:- Entrance porch, lounge, kitchen/diner with slate floor tiles and log burner, utility room with space & plumbing for a washing machine & tumble dryer, storage room and rear porch with access into the courtyard.

Stairs in the kitchen lead up to two double bedrooms- both enjoying the far reaching sea views and bathroom.

The property benefits from gas central heating & UPVC double glazed windows.

Viewing is essential to appreciate this detached house with its quiet, yet convenient location.

- ✓ ELEVATED TWO BEDROOM DETACHED HOUSE
- ✓ OPTION TO PURCHASE A PARKING SPACE
- ✓ SITUATED IN A QUIET, POPULAR VILLAGE
- ✓ FAR REACHING SEA VIEWS
- ✓ FRONT GARDEN WITH SEATING AREA
- ✓ REAR COURTYARD
- ✓ CLOSE TO LOCAL SHOPS, SCHOOLS, PROMENADE & BEACH
- ✓ NO CHAIN
- ✓ FREEHOLD

### Porch

5' 9" x 3' (1.75m x 0.90m)

### Lounge

11' 9" x 10' 10" (3.58m x 3.31m)



### Kitchen/Diner

14' 9" x 14' 1" (4.49m x 4.29m)



### Utility Room

8' 10" x 6' 9" (2.70m x 2.07m)

### Rear Porch

4' 11" x 3' 3" (1.50m x 0.98m)

### Bedroom One

11' 9" x 10' 8" (3.58m x 3.25m)



### Bedroom Two

14' 1" x 8' 2" (4.28m x 2.50m)



### Bathroom

8' 4" x 6' 1" (2.54m x 1.84m)



### Location

The property is located in an elevated position in the semi-rural Village of Penrhynside. It is within close proximity of the local shops, supermarket and other amenities of Penrhyn Bay. The popular Victorian Resort of Llandudno with its wealth of shops, cafes, restaurant, attractions is 2 miles in distance.

### Directions

From the Rhos-on-Sea office turn left onto the promenade, proceed through Penrhyn Bay, straight across at the roundabout. Just before the "Llandudno Welcomes You" sign take the left turn for Penrhynside which will take you onto Pendre Road.

Council Tax Band: D (provided on [www.voa.gov.uk](http://www.voa.gov.uk))

Energy Performance Rating Band: D

Tenure: Freehold.

## 2 Bedroom Detached House

Fairview  
Pendre Road  
Penrhynside  
Conwy  
LL30 3BH

# £225,000

Reference Number: RP4268  
15/4/2026

Fletcher & Poole,  
1A Penrhyn Avenue, Rhos on Sea, LL28 4PS

Registered Company  
Number 4687367

### Valuation

Thinking of moving in the near future please do not hesitate to ask for a FREE sales valuation

### Viewing

By appointment contact:

tel: 01492 549178

email: [rhosonseafletcherpoole.com](mailto:rhosonseafletcherpoole.com)  
web: [www.fletcherpoole.com](http://www.fletcherpoole.com)

