



**28 COMPTON CRESCENT  
CHESSINGTON  
KT9 2HB  
£520,000**

**EXTENDED TERRACE HOUSE**

**THREE BEDROOMS**

**24'5 X 10'4 LIVING ROOM**

**15'9 X 10'2 KITCHEN DINING ROOM**

**TWO SHOWER ROOMS**

**GAS CENTRAL HEATING**

**DOUBLE GLAZED WINDOWS**

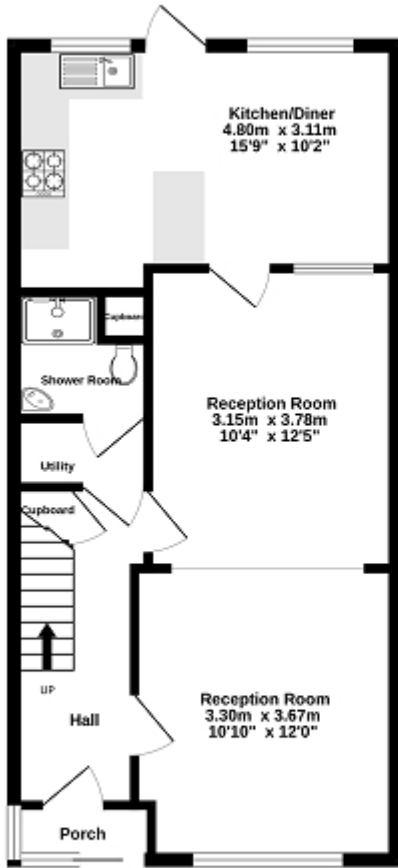
**38' REAR GARDEN**

**OFF STREET PARKING**

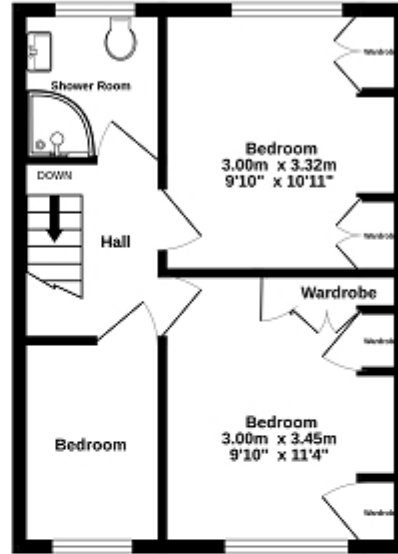
**SOUGHT AFTER LOCATION**

**AN IDEAL FIRST TIME BUY OR FAMILY HOME**

Ground Floor  
49.3 sq.m. (530 sq.ft.) approx.



1st Floor  
34.0 sq.m. (366 sq.ft.) approx.



TOTAL FLOOR AREA: 83.3 sq.m. (896 sq.ft.) approx.

Whilst every attempt has been made to ensure the accuracy of the floorplan contained herein, measurements of doors, windows, rooms and any other items are approximate and no responsibility is taken for any error, omission or mis-statement. This plan is for illustrative purposes only and should be used as such by any prospective purchaser. The services, fixtures and appliances shown have not been tested and no guarantee as to their operability or efficiency can be given.  
Made with Metropix ©2020

