



## Halesworth Road, SE13

£1,800 Per calendar month

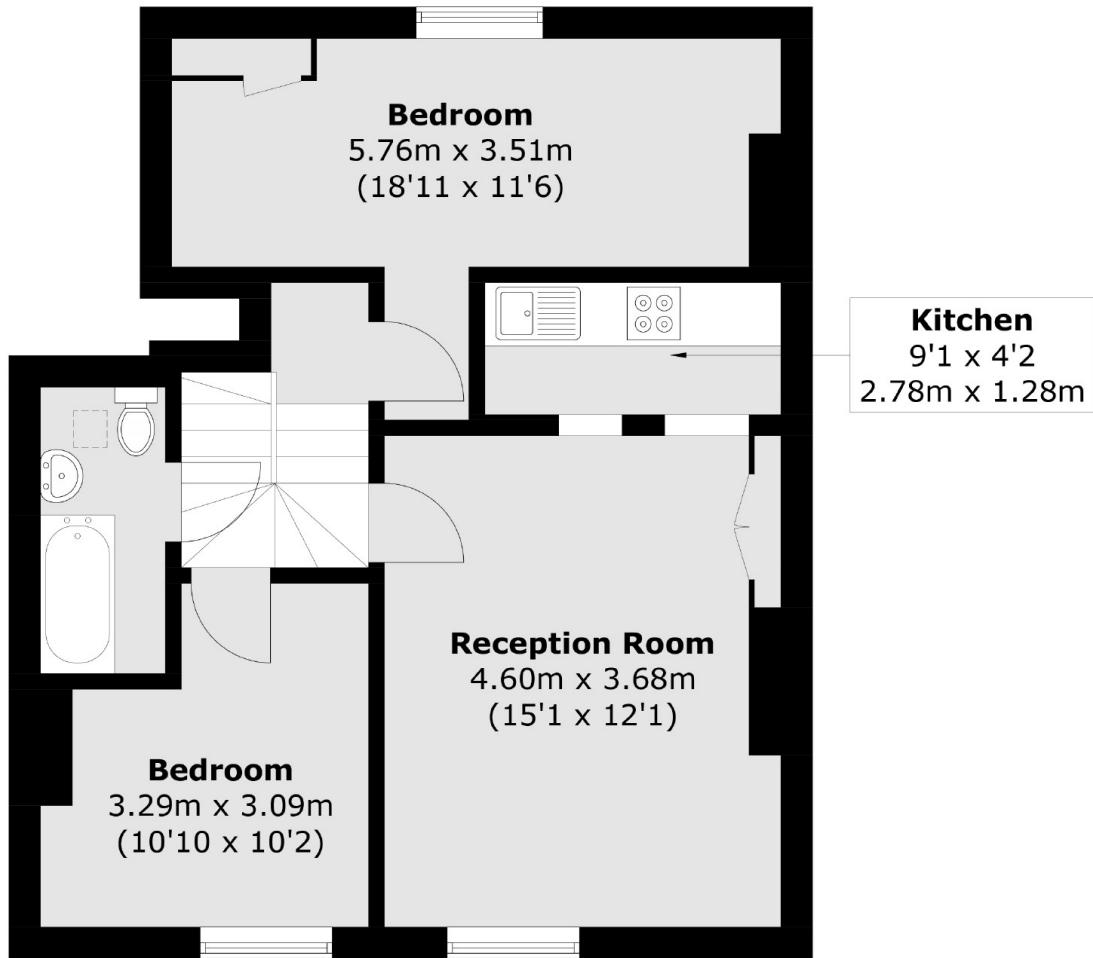
A well presented top floor, split level flat in this period conversion. Leading up the stairs you will find a generous size double bedroom and a three piece suite bathroom offered in neutral decor. The lounge is semi open plan featuring large windows and high ceilings. Further along this level of the apartment you will also find the second bedroom equally useful as a guest room or home office.

Halesworth Road is a lovely residential road located just around the corner from Hilly Fields and between St. Johns, Lewisham and Ladywell train stations giving excellent transport links into London and the city.

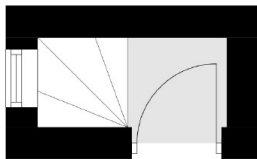
### Features

- Period Conversion
- Top Floor Flat
- Two Double Bedrooms
- Separate Kitchen
- Well Presented
- Close To Lewisham DLR

Halesworth Road,  
London, SE13



## Second Floor



## First Floor

Total area (approx.): 55.4 sq. m (596.3 sq. ft)