

FLAT 23, LINDSAY PARK

POOLE

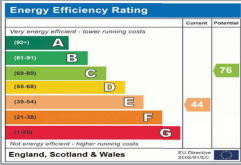
Dorset, BH13 6AU

£1,400 PCM

goadsby.com

TWO BEDROOM APARTMENT IN BRANKSOME

- Two Bedroom Apartment
- Parking and Balcony
- Flexible Furnishings.
- Close To Transport Links And Shops
- EPC Rating: Band



Reference: 1192826

Deposit Amount: £1,615.38

Council Tax Band: D

Furnishing: Furnished/ Unfurnished

Heating Type: Electric Heating

Parking: Parking

Utilities:

- Mains Supply Electricity and Gas
- Mains Supply Water - metered

Drainage: Mains Supply Drainage

Broadband: Refer to Ofcom website
www.ofcom.org.uk/phones-and-broadband

Mobile Signal: Refer to Ofcom website
www.ofcom.org.uk/phones-and-broadband

Flood Risk: For more information refer to
gov.uk, check long term flood risk
www.gov.uk/check-long-term-flood-risk

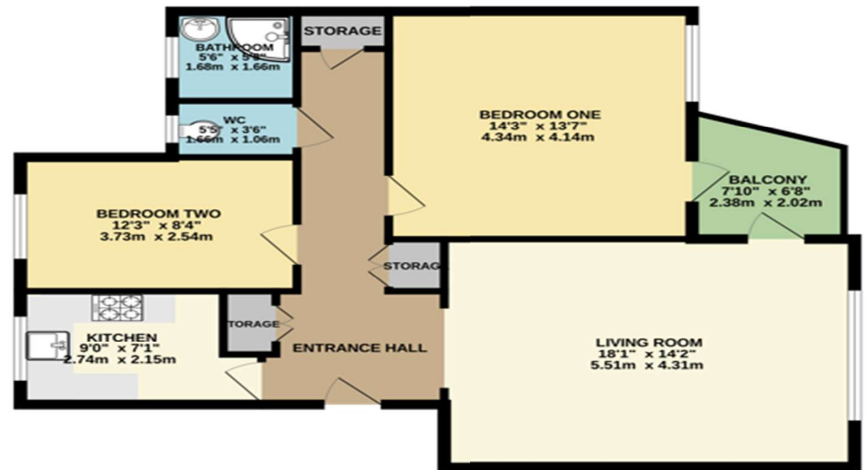
01202 686555
 poole@goadsby.com

245 High Street North
 Poole, Dorset
 BH15 1DX



This two double bedroom third floor apartment is located within popular area within Branksome within close proximity to local shops and amenities. This property is offered on an furnished/Unfurnished basis, it is bright and modern throughout and benefits from allocated parking.

THIRD FLOOR



This Floor Plan is for guidance only and is NOT to SCALE
 Made with Myfloorplan

PLEASE NOTE:

Measurements quoted are approximate and for guidance only. Fixtures, fittings, services & appliances have not been tested and therefore no guarantee can be given that they are in working order. Images have been produced for information and it cannot be inferred that any item shown is included with the property. These particulars are believed to be correct but their accuracy is not guaranteed and they do not constitute an offer or form part of a contract. Solicitors are specifically requested to verify the sales particulars details in the pre-contract enquiries, in particular: price, local and other searches.

Goadsby & Harding (Residential) Ltd
 Registered Office: 99 Holdenhurst Road, Bournemouth, Dorset BH8 8DY Registered in England No. 1871280