



**Trueman  
Letting  
Company**



**14 Meadow Bank**

**£1,595 PCM**

**Farnham**

A modern two bedroom property in this sought after central location offering easy access to Farnham Town Centre with all amenities and within a short walk of Farnham Mainline Railway Station. The property is being repainted throughout prior to a new tenancy starting in April and 2 allocated parking spaces. EPC C COUNCIL TAX D. AVAILABLE MID APRIL 2026.  
HISTORIC PHOTOS



• Entrance Hallway with Cloakroom • Sitting/Dining Room with patio doors to rear garden • Kitchen with gas hob, electric oven under, washing machine and fridge/freezer • Two Double BedroomS both with fitted wardrobe cupboards • Bathroom fitted with Shower Cubicle • Lovely rear garden with garden shed

#### HALLWAY WITH CLOAKROOM

Hallway with Cloakroom

#### SITTING/DINING ROOM

Sitting Room/Dining Room with patio doors out to delightful rear garden

#### FITTED KITCHEN

Fitted Kitchen with gas hob, electric cooker under, fridge/freezer, washing machine

#### TWO DOUBLE BEDROOMS

Both fitted with range of mirrored wardrobe cupboards

#### BATHROOM

With Shower Cubicle

#### GARDENS WITH SHED

Front and delightful rear garden with Garden Shed

#### ALLOCATED PARKING

Two allocated parking spaces



• Two Allocated Parking Spaces • EPC C • COUNCIL TAX D • REPAINTED THROUGHOUT PRIOR TO NEW TENANCY ALONG WITH OTHER UPDATES



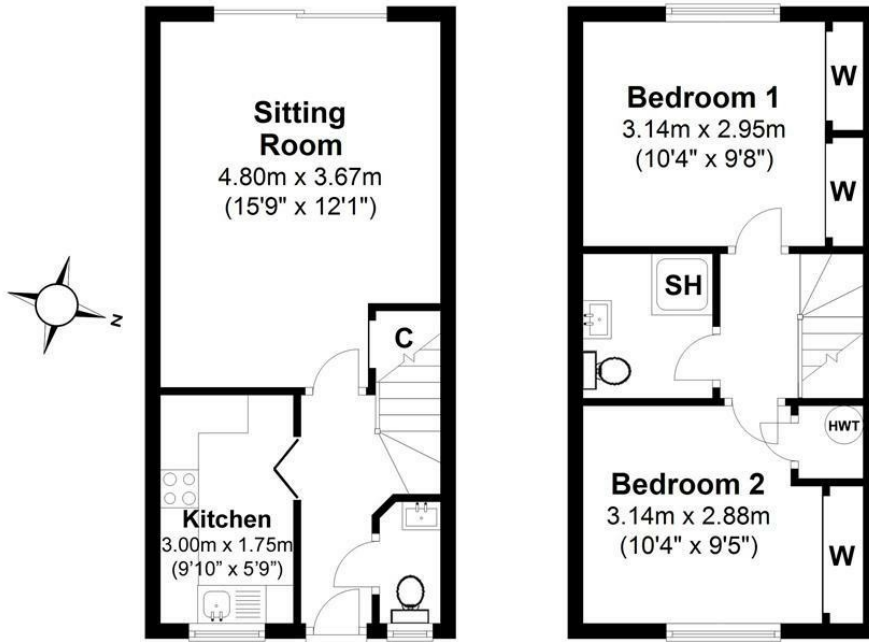
# 14 Meadow Bank, Farnham, GU9 7XN

## Ground Floor

Approx. 29.0 sq. metres (312.4 sq. feet)

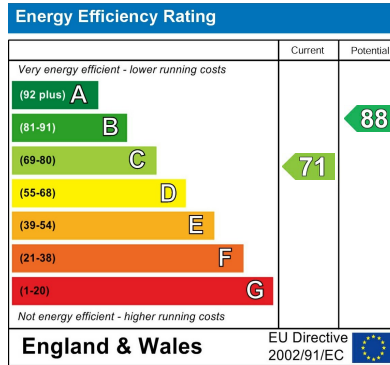
## First Floor

Approx. 29.0 sq. metres (312.4 sq. feet)



Total area: approx. 58.1 sq. metres (624.9 sq. feet)

This plan is for layout guidance only.  
Measurements are for general guidance  
only and must not be relied upon



Agents Note: Whilst every care has been taken to prepare these particulars, they are for guidance purposes only. All measurements are approximate and are for general guidance purposes only and whilst every care has been taken to ensure their accuracy, they should not be relied upon and potential buyers/tenants are advised to recheck the measurements

Trueman Letting Company Lettings 01252 711227  
5a Castle Street lettings@tlc-farnham.co.uk  
Farnham www.tlc-farnham.co.uk  
Surrey  
GU9 7HR

