



MEAD PROPERTY



**60 Moor End, Holyport, SL6 2YJ**

**Asking Price: £885,000**

# 60 Moor End, Holyport Maidenhead, Berkshire, SL6 2YJ

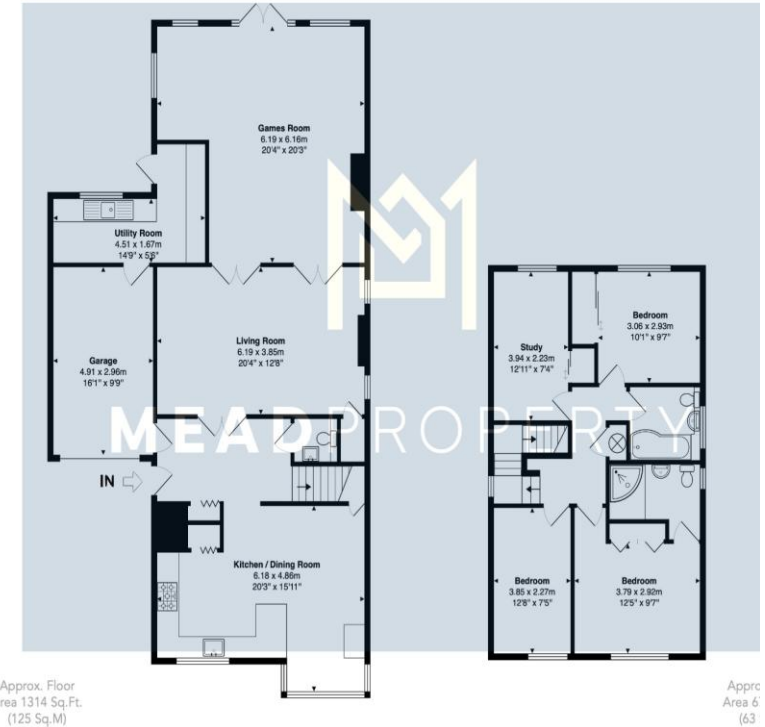
A spacious (over 200 sq.ft) extended detached family house located at the end of a cul-de-sac on this popular established development within the catchment area of HOLYPORT COLLEGE. The well-presented and generous living space is complimented by over 100' of south facing garden backing onto open fields, large driveway, and garage. The shops and amenities of Holyport village are within 15 minutes' walk as is the picturesque village green and pubs/restaurants. Maidenhead town center within Elizabeth Line station is under 2 miles and there is easy access to both the M4 and M40 motorways.

## Accommodation & Amenities

**EXTENDED FAMILY HOUSE.  
CATCHMENT OF HOLYPORT COLLEGE.  
4 BEDROOMS, 2 BATHROOMS.  
KITCHEN/FAMILY ROOM AND 2 FURTHER LARGE RECEPTIONS.  
OVER 100' SOUTH FACING GARDEN.  
OPEN FIELDS TO REAR.  
GARAGE AND DRIVEWAY.**

## 60 Moor End, Holyport, Maidenhead, Berkshire, SL6 2YJ

Approx. Gross Area  
187 sq m – 2016 sq ft



This floor plan provided by Expert Survey Solutions Ltd is for indicative guidance only. Whilst every attempt has been made to ensure the accuracy of the floor plan windows and rooms are approximate and no responsibility is taken for any error, omission or mis-statement. Details shown on this floorplan including all measurements are guaranteed by either the provider or marketing estate/letting agency and should not be relied upon. If there is any area where accuracy is required, please contact the provider.



