



Englands Lane, NW3

£700,000

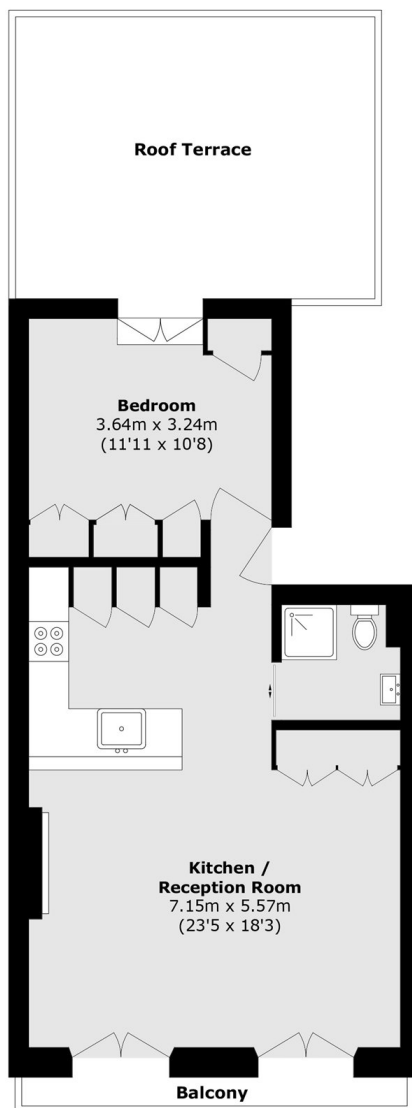
A spacious one bedroom apartment in very good condition with an original fireplace. On the first floor, the open plan kitchen/reception room enjoys morning sunlight through double glazed windows and a Juliette balcony. The bedroom opens onto a private terrace of approximately 25 sq m. Further benefits include underfloor heating and built-in storage.

Situated on England's Lane, the property is moments from a vibrant selection of cafés, delis, and local shops. The open spaces of Primrose Hill and Hampstead Heath are within easy reach. Excellent transport links include Belsize Park underground station (Northern line) and Swiss Cottage underground station (Jubilee line).

Features

- One Double Bedroom
- Chain Free
- Private Terrace
- Balcony
- Lovely Condition
- Long Lease (184)

Englands Lane, London, NW3



Total area (approx.): 53.4 sq. m (574.7 sq. ft)

Balcony area (approx.): 2.4 sq. m (25.8 sq. ft)

Roof Terrace area (approx.): 22.7 sq. m (244.3 sq. ft)