



Lavender Hill, SW11

£475,000

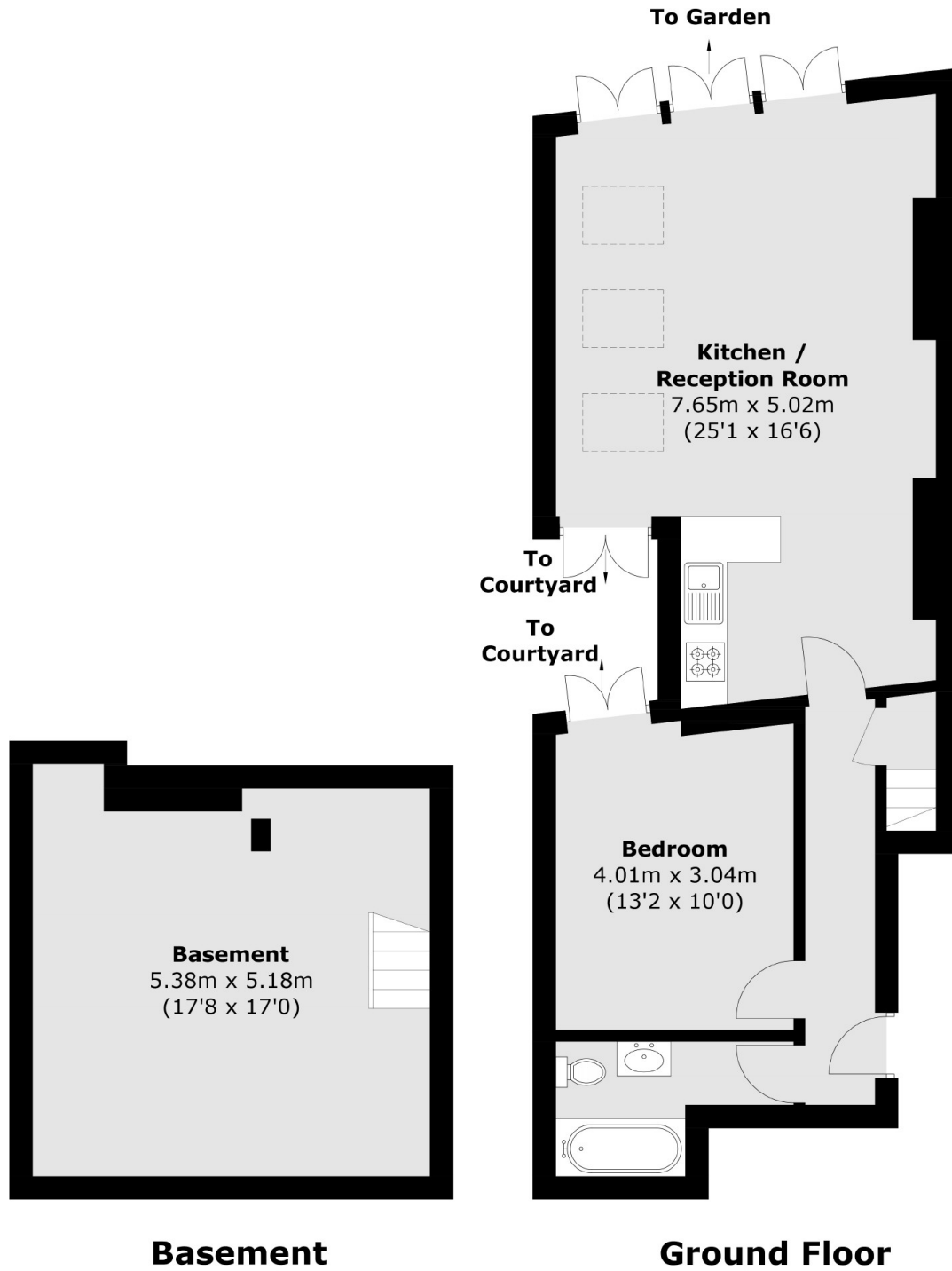
A spacious ground floor period conversion presented in excellent order throughout. Arranged to include an open plan reception room/kitchen with vast amounts of natural light which opens up to secluded South facing garden. Also comprising one double bedroom, modern bathroom & separate utility room in the cellar with large amounts of storage. The property is being sold chain free.

The property is located on the popular Lavender Hill. It is around the corner from Northcote Road which offers a good selection of shops, cafés, bars and restaurants. Clapham Common & Clapham Junction station are moments away.

Features

- Open Plan Reception/Kitchen
- One Double Bedroom
- Modern Bathroom
- Private South Facing Garden
- Separate Utility Room
- Chain Free

Lavender Hill, London, SW11



Total area (approx.): 85.6 sq. m (921.3 sq. ft)

Dexters

Northcote Road
93 St. John's Road
London
SW11 1QY
Sales
020 7483 6333

Energy Rating: C. We aim to make our particulars both accurate and reliable. However they are not guaranteed; nor do they form part of an offer or contract. If you require clarification on any points then please contact us, especially if you're traveling some distance to view. Please note that appliances and heating systems have not been tested and therefore no warranties can be given as to their good working order.

 **RICS** | Regulated
Estate Agent
and Letting Agent

[dexters.co.uk](https://www.dexters.co.uk)