

Parkheath

Sold on Service

Antrim Road NW3
£3,500 PCM (£808 per week) - Camden Band F

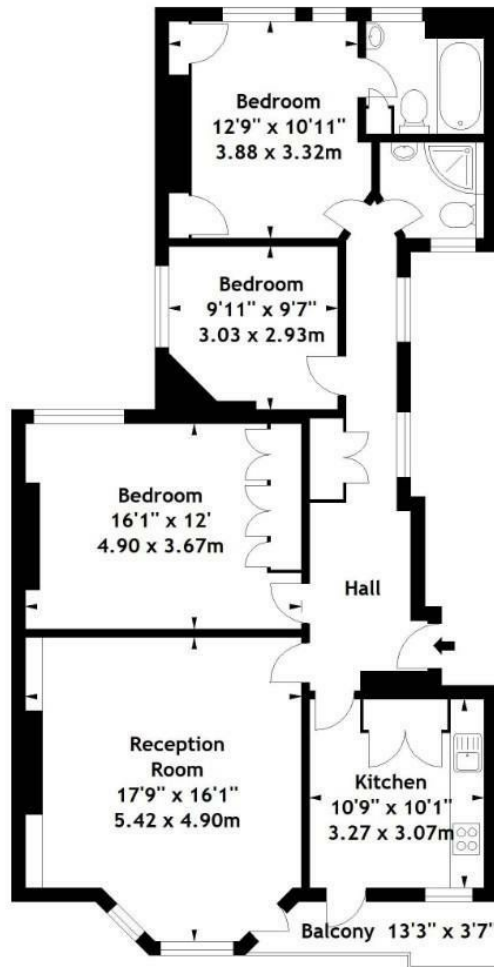


Spacious and well-proportioned 3 bedroom apartment
Generously sized reception with access onto balcony
Principle bedroom with en suite bathroom
1057 Sq Ft / 98.20 Sq M approx
Moments from Belsize Park underground station

Mansion block with communal gardens and porter
Modern kitchen/diner with appliances
2 further bedrooms and 3 piece family bathroom
Prime location close to England's Lane cafés
EPC: Rating C, Council Tax: Camden band F

Belsize Park Office 020 7431 3104

Antrim Mansions,
Antrim Road, NW3
Approx. Gross Internal Area
1057 Sq Ft - 98.20 Sq M



First Floor

Measured in accordance with RICS guidelines. Every attempt is made to ensure accuracy, however all measurements are approximate. This floor plan is for illustrative purposes only and is not to scale.

© Datography Ltd 2014
Photographs * Floorplans * Virtual Tours
Tel: 0845 643 4401 www.datography.com

The particulars do not constitute part of an offer or contract. The particulars, including text, photographs and plans, are for the guidance only of prospective purchasers/tenants and must not be relied upon as statements of fact. The descriptions provided therein represent the opinion of the author and whilst given in good faith should not be construed as statements of fact. Nothing in these particulars shall be deemed a statement that the property is in good condition or otherwise or that any services or facilities are in good working order. All measurements are approximate