


Pelham Crescent

The Park
Nottingham
NG7 1AU

Asking Price £145,000



 0115 841 1155



- Elegant Period Conversion
- Recently Fitted Kitchen Area with Appliances
- Communal Garden
- Shower Room
- Internal area approx. 370 sq. feet
- Studio Apartment
- Elegant Entrance Hall
- Living/Bedroom Area
- Patio
- Leasehold



0115 841 1155

Pelham Crescent, The Park, Nottingham, NG7 1AU

Key Features

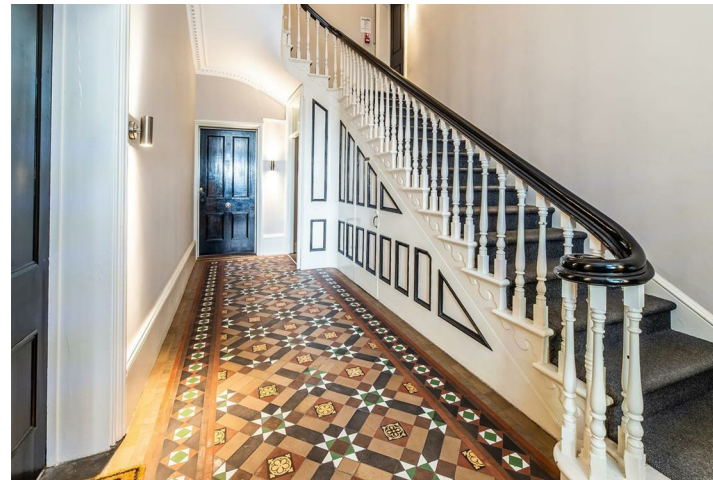
FHP Living are delighted to present this charming and beautifully appointed studio apartment, ideally situated within the prestigious and highly sought-after Park Estate.

This attractive property offers a rare opportunity to acquire a well-presented studio apartment, benefitting from access to a delightful patio area and well-maintained communal gardens.

The accommodation briefly comprises an open-plan living, sleeping and kitchen area, thoughtfully designed to maximise space and functionality. The kitchen is fitted with modern units and integrated appliances, while the living space features an elegant pull-down bed unit. A high ceiling and a large bay window, incorporating a French-style door, flood the room with natural light and enhance the sense of space. In addition, there is a contemporary shower room fitted with a modern suite. Early viewing is highly recommended.

The Park Estate, originally part of Nottingham Castle's historic deer park, is widely regarded as one of Nottingham's most desirable residential locations. Renowned for its architectural heritage, the estate features work by notable architects including PF Robinson, Watson Fothergill and TC Hine.

By the late 19th century, The Park had evolved into a distinguished residential estate, with around 400 homes established by 1887. Over the years, it has been home to a number of prominent figures, including Sir Paul Smith, AJ Mundella, Sir Jesse Boot and Sir Albert John Player.



Pelham Crescent, The Park, Nottingham, NG7 1AU



Flat 1, 7 Pelham Crescent, The Park, Nottingham NG7 1AU

APPROX. TOTAL GROSS INTERNAL FLOOR AREA 370.0 SQ FT 34.4 SQ METRES

Ground Floor





0115 841 1155

Pelham Crescent, The Park, Nottingham, NG7 1AU



Interested in this home?

Contact the FHP Living Team on 0115 841 1155

23 Bridgford Road
West Bridgford
Nottingham
NG2 6AU

1 Weekday Cross
The Lace Market
Nottingham
NG1 2GB

Energy Efficiency Rating		Current	Potential
Very energy efficient - lower running costs			
(92 plus) A			
(81-91) B			
(69-80) C			
(55-68) D			
(39-54) E		42	
(21-38) F			
(1-20) G			
Not energy efficient - higher running costs			
England & Wales		EU Directive 2002/91/EC	

These sales particulars have been prepared by FHP Living on the instruction of the vendor. Services, equipment and fittings mentioned in these particulars have NOT been tested, and as such, no warranties can be given. Prospective purchasers are advised to make their own enquiries regarding such matters. These sales particulars are produced in good faith and are not intended to form part of a contract. Whilst FHP Living have taken care in obtaining internal measurements, they should only be regarded as approximate.

Purchaser information - Under the Protecting Against Money Laundering and the Proceeds of Crime Act 2002, FHP Living require any successful purchasers proceeding with a purchase to provide two forms of identification i.e. passport or photocard driving license and a recent utility bill. This evidence will be required prior to FHP Living instructing solicitors in the purchase or the sale of a property.