

38 Village Centre, £195,000*

(Other charges apply)

RICHMOND
VILLAGES

Part of Bupa

SF

1



1



EPC - C



1 bedroom second floor apartment

A beautifully presented one-bedroom apartment located on the second floor of the main Village Centre at Richmond Villages Northampton. Peacefully positioned at the end of a quiet corridor, this lovely home offers an entrance hall, a bright and comfortable living room, a practical kitchenette, and a spacious double bedroom featuring its own ensuite shower room.

Specification

- The welcoming entrance hall provides direct access to all rooms within the apartment.
- The spacious southwest-facing living room features French doors to a private balcony, creating a bright and inviting space ideal for relaxing or entertaining.
- The fitted kitchenette offers wall and base units, a stainless steel sink, white work surfaces, and an integrated fridge with freezer compartment, complemented by an opening window for natural light.
- The generously sized double bedroom includes a double-glazed window, radiator, ample storage with shelf and hanging rail, and convenient TV and telephone points.
- The modern ensuite is equipped with a walk-in shower, low-level WC, fitted vanity unit with washbasin, wall mirror, and heated towel rail.
- TV and satellite points*.
- Well stocked flower borders and lawns maintained by the Village Gardeners.
- Allocated parking space for one car.

*Satellite subscription not included.

Important Notice: These particulars are intended to give a fair and substantially correct overall description.

Other fees and charges apply, please contact the Village Advisers for further details.

Properties are sold on a 125-year lease, with 105 years remaining. Some images used may represent similar show apartments and may also include CGI imagery.



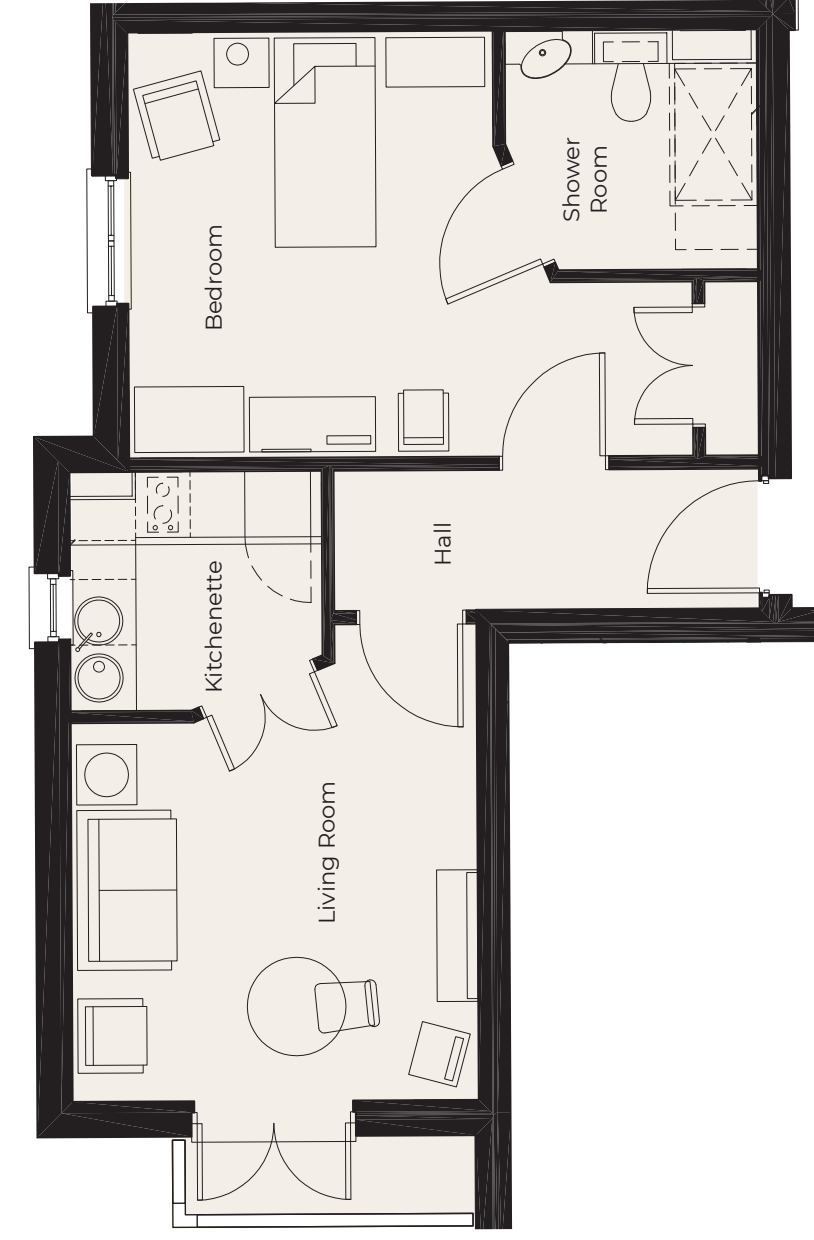
01604 432 600

northampton@richmond-villages.com

Richmond Villages Northampton,
Bridge Meadow Way, Grange Park, Northampton NN4 5EB

38 Village Centre

Second Floor



- Kitchenette**
2300mm x 2180mm
7'7" x 7'2"
- Living Room**
4347mm x 3710mm
14'3" x 12'2"
- Bedroom**
5150mm x 3880mm
16'10" x 12'9"
- Shower Room**
2300mm x 2180mm
7'7" x 7'2"

These particulars are intended to give a fair and substantially correct overall description.

Measurements have been taken at 1500mm skimming height.

All dimensions are approximate. Bedroom measurements include the wardrobe if applicable. Room measurements include bay windows if applicable.

Furniture layout is to give an indicative impression. Although all efforts have been made to ensure its accuracy at time of print dimensions, fixtures, fittings, finishes and specifications are subject to change without notice.

The properties are sold unfurnished.

